

Office of the State Archaeologist

*Fiscal Year 2019
Annual Report*



The Year in Review

OSA mission statement, academic activities, staff achievements, annual work plan accomplishments, and plans and prospects for FY 2019.

30,094

By the Numbers

An overview of FY 2019 through numbers and charts.



Student Success

Eighteen undergraduate and one graduate students were involved in various OSA archaeological and related research and repository activities over the course of the fiscal year.



Research

The OSA conducts a wide range of research activities to discover the archaeological and architectural history of Iowa and surrounding midcontinent over the last 13,000 years.



Bioarchaeology

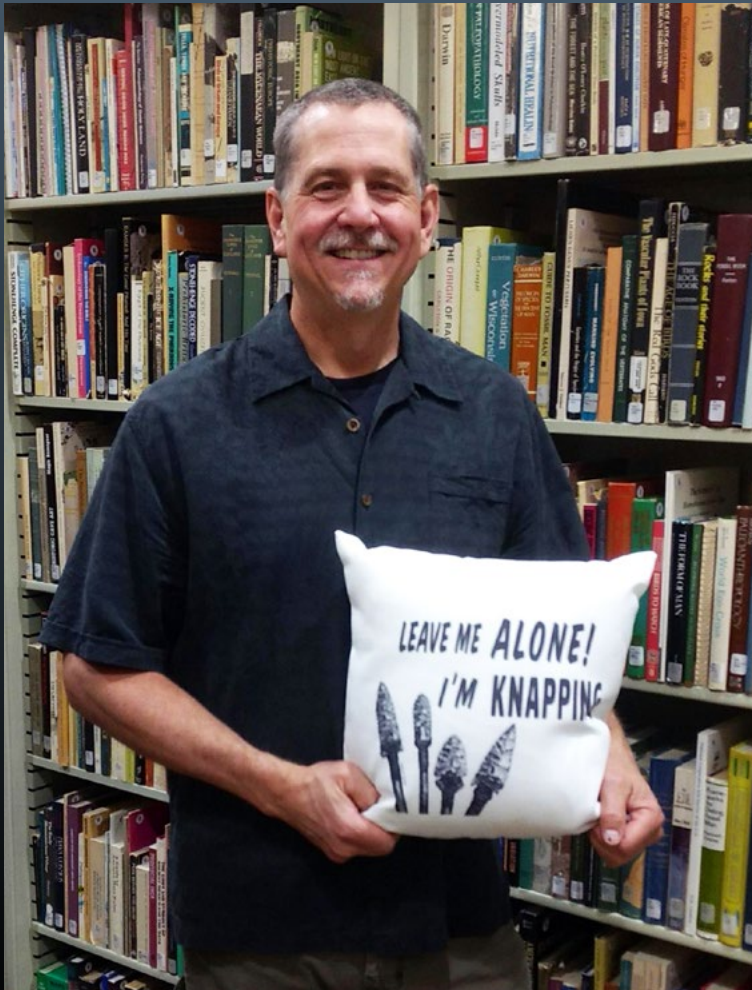
In FY 2019 the OSA Bioarchaeology Program's efforts have focused on fulfilling its responsibilities towards the Native American Graves Protection and Repatriation Act as well as engaging in public education and outreach events.



Strategic Initiatives

The OSA provides resources and opportunities that encourage the understanding, appreciation, and stewardship of Iowa's archaeological past.

The Year in Review



John F. Doershuk, State Archaeologist and Director of the University of Iowa Office of the State Archaeologist



OSA Mission

The position of State Archaeologist was established in 1959. [Read the entire mission statement](#)

[Advisory Committee](#) [Indian Advisory Council](#)



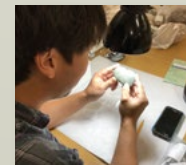
Academic Activities

OSA staff instructed four UI classes during FY 2019 including CRM Archaeology and Human Osteology. OSA hosted eight Brown Bag lectures and a creative writing class for the UI English Department.



Office and Staff Achievements

During FY 2019, OSA staff were recognized for their outstanding professional presence and decades of service. We also welcomed three new hires to the OSA team!



FY 2019 Annual Work Plan Accomplishments

In FY 2019 the OSA continued energetically pursuing research, education and outreach, and service activities throughout Iowa, the surrounding region, and internationally.

2020

FY 2020 Plans and Prospects

For FY 2020 the OSA has established 21 specific objectives.



Nuts and Bolts for FY 2019

Organization chart; financial details; strategic plan 2016–2021; and listings of OSA's public presentations, papers presented at professional meetings, publications, service, and technical reports.



Support Iowa Archaeology with Fun Stuff

[Return to Table of Contents](#)

Academic Activities



Lara Noldner
Bioarchaeology Director
Instructor

First-Year Seminar: A Tour of Biological Anthropology

Students explore the diverse field of biological anthropology and learn about many of the ways that knowledge of human biology can inform us about how people have evolved, migrated, and adapted to the many regions of the world we now inhabit.

Fall 2018, 16 students



John F. Doershuk
State Archaeologist
Instructor

CRM Archaeology: Practice and Practicalities

This online course immersed participants in the practical applications of cultural resources management archaeology laws, regulations, and practice.

Spring 2019, 13 students



Creative Writing

OSA hosted Phillip Round's (English) creative writing class exposing students to the extensive archival and artifactual resources in the state archaeological repository as inspiration for writing assignments.

Spring 2019, 13 students

Field Archaeology

Iowa Lakeside Laboratory

The 2019 Lakeside Laboratory archaeological field school continued on-going research efforts in the Iowa Great Lakes region including excavations at a Woodland-era site (13DK143) within Mini-Wakan State Park immediately adjacent to the north edge of Spirit Lake.

Summer 2019, 11 students

Date of Presentation	Presenter	Association	Title	In Attendance
12/7/2018	Jennifer Mack	University of Iowa	What Hope Lies Buried Here: Differential Mortality and Mortuary Treatment of Adolescents in Dubuque's Third Street Cemetery	30
1/18/2019	Bryan Kendall	University of Iowa	Where is the Weir? Relocating the Lost Amana Fish Weir	41
2/15/2019	Lara Noldner	University of Iowa	The Physical and the Digital: a test of the reliability of craniometric data collection from 3D models	27
2/22/2019	Warren Davis	University of Iowa	Preservation of the John Palmquist Collection from Southwestern Iowa	39
3/1/2019	Adam Skibbe and Michelle Wiersheid	University of Iowa	More LIDAR - further adventures in historic and pre-historic cultural preservation... using lasers!	32
3/8/2019	Joseph A. Tilly	University of Iowa	Exploring the Collections from the Phipps National Historic Landmark Site (18CK21)	25
3/15/2019	Dr. Luis Benítez de Lugo	Universidad Autónoma de Madrid/ Universidad Nacional de Educación a Distancia	Excavations at the Bronze Age Ceremonial Center of Castiello del Bonete (Terresbates, Ciudad Real, Spain)	30
3/29/2019	James Enloe	University of Iowa	Stratigraphy, occupations and disturbance: The complex depositional history of Woodpecker Cave	35

Brown Bags

Brown Bag at the OSA is a regular series through which OSA staff and guests share their research over the lunch hour. Topics include individual areas of interest, work in the field, and recent developments in archaeology and architectural history throughout Iowa and the Midwest. Presentations are free and open to the public and are held in OSA's main laboratory. Attendees are encouraged to engage in discussion and exchange following the presentation.

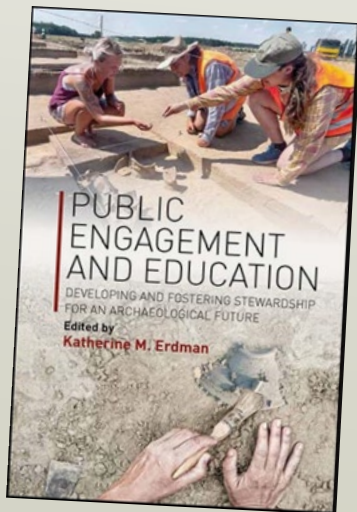
[Return to The Year in Review](#)

[Return to Table of Contents](#)

Office and Staff Achievements

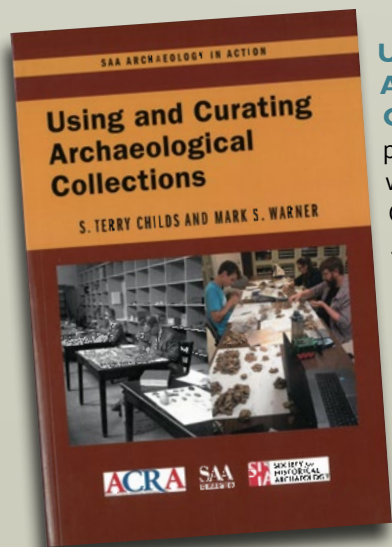
Notable Publications

Public Engagement and Education: Developing and Fostering Stewardship for an Archaeological Future was published with a contributed chapter entitled “Strengthening a Place-Based Curriculum through the Integration of Archaeology and Environmental Education” by our own Elizabeth Reetz and Chérie Haury-Artz.



Using and Curating Archaeological Collections

was published early in 2019 with a chapter written by OSA staff: John Cordell, John Doershuk, and Steve Lensink. Their chapter is entitled “Dodging the repository money pit: the Iowa experience.”



Staff Excellence Award

One recipient is chosen annually and awarded up to \$750 of funding toward professional development, research, or education and outreach endeavors. In FY 2019, Bryan Kendall was awarded funding to conduct stable isotope analysis of animal bone from the Dixon site. The samples include bison as well as other archaeological animal bone species. The results of the analysis will be used to determine if ancient hunting patterns are observable with this technique.

In the News

A 2019 article about non-destructive archaeological methods features a lidar image of effigy mounds created by staff at the OSA ([Read Article](#)). Content for this article was gathered from several sources. One source is from a report by the OSA with funding from a grant partially from the National Center for Preservation Technology and Training ([read original report](#)).

Retirements

Two OSA staff retired from the OSA and University of Iowa during FY 2019. Congratulations!



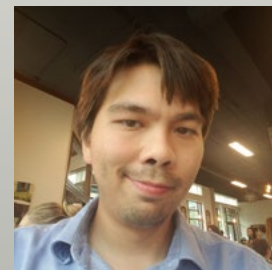
Carl Merry,
34 years



Mark Anderson,
30 years

New Hires

OSA gained three new staff in FY 2019. Welcome!



Warren Davis, October 2018



Cynthia Peterson, April 2019



Veronica Mraz, June 2019

[Return to The Year in Review](#)

[Return to Table of Contents](#)

FY 2019 Annual Work Plan Accomplishments

In FY 2019 the OSA continued to energetically pursue research, education and outreach, and service activities on campus and throughout Iowa, the surrounding region, and internationally. In the process, the OSA continued engaging with a wide variety of students and public in and outside of Iowa. The OSA established 24 specific objectives for FY 2019 which reflected goals identified in OSA's Strategic Plan: 2016–2021 ([see Appendix A](#)). These objectives were designed to focus OSA staff energy toward contributing to UI's efforts to be a leading public research university while cost-efficiently maximizing the development, dissemination, and preservation of knowledge of Iowa's human past. The specific objectives were:

1. Continue providing research support for major economic infrastructure projects such as highways, communication towers, utility corridors, and recreation areas through the OSA's research division. **Successful**
2. Further assist farms, small business, and non-profits to quickly meet their local, state, and federal regulatory obligations at affordable costs. **Successful**
3. Teach during fall 2018 a first-year seminar section, "Biological Anthropology" which engages incoming UI students in current research at the OSA. **Successful**
4. Continue development of OSA's capacity to conduct drone-based research by utilizing OSA's equipment in field projects involving collection of high-resolution and thermal images and develop skills in processing and analyzing collected images. **Successful**
5. Arrange for an Iowa Center for Research by Undergraduates academic year funding package to support a student working on the State Historical Society of Iowa HRDP-funded project by OSA: "Preservation of the John Palmquist Archaeological Collection from Southwest Iowa." **Successful**
6. Utilize OSA resources to offer undergraduate and graduate students research and employment opportunities including as volunteers, work-study students, research assistants, and interns, and mentor graduate students in Anthropology—especially those working on a Master's degree specialization in Cultural Resource Management archaeology or Midwest/Plains research topics. **Successful**
7. Complete publication and distribution of the Wall Ridge Site (13ML176) technical report through the University of Utah Press or as OSA Report 25. **In Progress**
8. Teach during spring 2019 the online course "CRM Archaeology: Practice and Practicalities" on behalf of the UI Department of Anthropology. **Successful**
9. Submit during fall 2018 an Arts and Humanities Initiative (AHI) internal funding grant application to UI to support implementation of a high-resolution bioarchaeology scanning project as proof-of-concept for a NEH funding application. **Grant application submitted but not funded**
10. Re-submit in early summer 2019 an NEH proposal for an Implementation Grant through the Humanities Collections and Reference Resources Program to create a 3D digital library of the human skeletal remains in the UI Stanford Collection so that it can be made more accessible to qualified researchers. This, in turn, will allow us to learn more about the diversity of individuals represented. **Application not submitted to NEH but an alternative application was submitted to NSF**
11. Continue to extend the impact of the OSA's various social media efforts, such as Facebook, Twitter, Tumbler, and Instagram, to further increase the number of followers and timely dissemination of information on Iowa archaeology topics. **Successful**
12. Continue to conduct high-quality archaeological, architectural history, and osteological research for regional, national, and international grant-funded sponsors. **Successful**
13. Complete lab, reporting, and public outreach for the Dixon Oneota site archaeological excavations conducted on behalf of Iowa DOT in collaboration with tribal partners. **Successful**
14. Continue to provide high-quality statewide osteological services to the State Medical Examiner's Office and law enforcement personnel as needed and continue to work with Iowa citizens, state agencies, tribal partners, and county level historic preservation commissions to document historic cemeteries and ancient burial sites on both private and state-owned lands. **Successful**
15. Complete reporting and educational outreach for the DOT-funded project Bringing the Glenwood Culture to Iowans: Research, Publication, and Engagement on Archaeological Sites Excavated by the Iowa Department of Transportation. **In Progress**
16. Complete the funded Statewide Transportation Alternatives Program project: Documenting Iowa's Pre-Settlement Roads and Trails. **In Progress**
17. Submit for publication at least 10 articles, reports, and book chapters, including to peer-reviewed journals, and continue contributions to newsletters, online websites, and wikis to improve the dissemination of information about the significance and value of Iowa's past. **Successful**
18. Teach "Introduction to Archaeological Field Methods" for Cornell College in fall 2018 and "Field Archaeology", in Summer 2019, through the Iowa Lakeside Laboratory Regents Resource Center. **Successful**
19. Initiate strategic initiatives to increase OSA's fundraising capacity in support of education and research activities statewide. **Successful**
20. Participate in the 2019 Society for American Archaeology (SAA) international conference (Albuquerque, NM) and chair the national Public Education Committee annual meeting. OSA staff will also participate at SAA in the annual meetings of Project Archaeology, the National Association of State Archaeologists, and the Council of Councils (professional associations). **Successful**
21. Complete management of the Calendar Year 2018 University of Iowa Dare to Discover Mobile Museum season and successfully decommission the project (Successful) including creation of a summary report of the five-season project impacts. **In Progress**
22. Continue analysis and reporting of data collected on the Lake Red Rock mammoth to fully ascertain whether human-proboscidean interaction took place and prepare a publication and grant application for addition investigation, if warranted, on the findings. **Successful**
23. Add a new data layer to I-SitesPro which enhances recognition of recorded archaeological sites with associated human remains or Burial Project information and assist Iowa SHPO with "stop-gap" recordation of professionally surveyed project areas posted to I-SitesPro as an accessible data layer. **Successful**
24. Modernize OSA's Archival database and create an efficient online portal linked to I-SitesPro. **In Progress**

[Return to The Year in Review](#)

[Return to Table of Contents](#)

FY 2020 Plans and Prospects

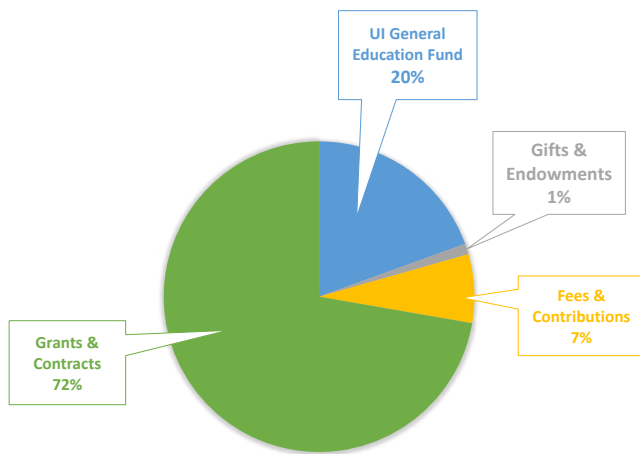
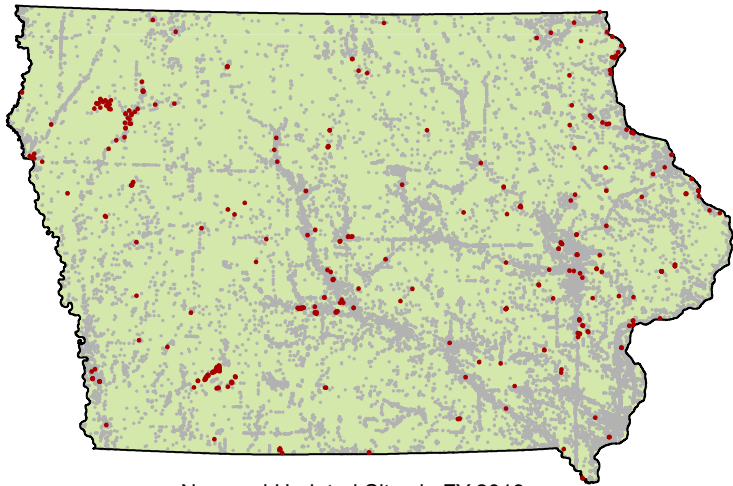
In FY 2020 the OSA will continue to energetically pursue research, education and outreach, and service activities on campus and throughout Iowa, the surrounding region, and internationally. In the process, the OSA will continue engaging with a wide variety of students and public in and outside of Iowa. The OSA has established 21 specific objectives for FY 2020 which reflect goals identified in OSA's Strategic Plan: 2016–2021 (see [Appendix A](#)). These objectives are designed to focus OSA staff energy toward contributing to UI's efforts to be a leading public research university while cost-efficiently maximizing the development, dissemination, and preservation of knowledge of Iowa's human past. The specific objectives are:

1. Continue providing research support for major economic infrastructure projects such as highways, communication towers, utility corridors, and recreation areas through the OSA's research division.
2. Further assist farms, small business, and non-profits to quickly meet their local, state, and federal regulatory obligations at affordable costs.
3. Teach during fall 2019 a first-year seminar section, Biological Anthropology which engages incoming UI students in current research at the OSA.
4. Continue development of OSA's capacity to conduct drone-based research by utilizing OSA's equipment in field projects involving collection of high-resolution and thermal images and develop skills in processing and analyzing collected images.
5. Assist the Iowa Archeological Society to create an independent website with up-to-date content.
6. Utilize OSA resources to offer undergraduate and graduate students research and employment opportunities including as volunteers, work-study students, research assistants, and interns, and mentor graduate students in Anthropology—especially those working on a Master's degree specialization in Cultural Resource Management archaeology or Midwest/Plains research topics.
7. Complete publication and distribution of the Wall Ridge Site (13ML176) volume through the University of Utah Press.
8. Teach during fall 2019 the online course Archaeology of the American Midcontinent on behalf of the UI Department of Anthropology.
9. Submit an emergency HRDP grant to support flood damage assessment and salvage of exposed human remains at 13PM7, a Mill Creek Culture village site impacted by spring 2019 flooding on the Big Sioux River, Plymouth County, Iowa.
10. Transform the OSA website to reflect current staffing, activities, and professional services for research and education statewide.
11. Continue to extend the impact of the OSA's various social media efforts, such as Facebook, Twitter, Tumbler, and Instagram, to further increase the number of followers and timely dissemination of information on Iowa archaeology topics.
12. Continue to conduct high-quality archaeological, architectural history, and osteological research for regional, national, and international grant-funded sponsors.
13. Complete a NAGPRA Consultation/Documentation Grant involving review of OSA's artifact collections for any unassociated funerary objects, sacred objects and items of cultural patrimony that may be subject to NAGPRA. Host a consultation event at OSA with tribes for their assistance in identification of these items.
14. Continue to provide high-quality statewide osteological services to the State Medical Examiner's Office and law enforcement personnel as needed and continue to work with Iowa citizens, state agencies, tribal partners, and county level historic preservation commissions to document historic cemeteries and ancient burial sites on both private and state-owned lands.
15. Complete reporting and educational outreach for the DOT-funded project Bringing the Glenwood Culture to Iowans: Research, Publication, and Engagement on Archaeological Sites Excavated by the Iowa Department of Transportation.
16. Complete the funded Statewide Transportation Alternatives Program project: Documenting Iowa's Pre-Settlement Roads and Trails.
17. Submit for publication at least 10 articles, reports, and book chapters, including to peer-reviewed journals, and continue contributions to newsletters, online websites, and wikis to improve the dissemination of information about the significance and value of Iowa's past.
18. Teach Introduction to Archaeology for Cornell College in spring 2020 and Field Archaeology, in Summer 2020, through the Iowa Lakeside Laboratory Regents Resource Center.
19. Continue strategic initiatives to increase OSA's fundraising capacity in support of education and research activities statewide.
20. Participate in the 2020 Society for American Archaeology international conference (Austin, TX) and chair the national Public Education Committee annual meeting.
21. Complete modernization of the OSA's archival database by creating iArch as an efficient online access portal.

[Return to The Year in Review](#)

[Return to Table of Contents](#)

By the Numbers



 **59**

years the OSA has served Iowa and Midwest region as a UI research center

30,094

archaeological sites recorded by the end of the fiscal year

\$

1,759,638

US dollars OSA received in support from sponsored grants and contracts

 **1**

% is how much gifts and endowments contributed to the OSA budget

22,484

people engaged through OSA and archaeology events

 **58**

staff members and adjunct researchers worked at OSA during FY 2019

3,058

volunteer and student hours contributed to OSA projects

 **81**

collections were newly accessioned during the fiscal year

[Return to Table of Contents](#)

Research



20 Presentations at Regional and International Professional Conferences



Archaeological and Architectural Investigations

The OSA conducts both contract and grant-funded research involving archaeological and architectural history studies statewide.



Collections

The OSA continually adds archaeological materials and related documents to the State Archaeological Repository and provides materials for local, regional, and national exhibit and research purposes.



Technology

Conducting and disseminating modern high-quality archaeological research requires a major investment in research technology. The OSA's involvement in such technology covers the gamut of twenty-first century breakthroughs in archaeology.

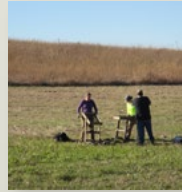


[Return to Table of Contents](#)



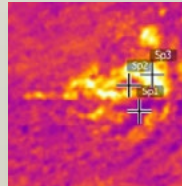
Archaeological and Architectural Investigations

The OSA conducts both contract and grant-funded research involving archaeological and architectural history studies statewide. These projects, regardless of funding source or sponsor, generate important new knowledge on Midwestern prehistory and history, and they form the basis for many staff publications, professional and public presentations, and student and faculty research projects.



Infrastructure Surveys

The OSA helped the creation and development of infrastructure throughout Iowa by completing over 300 investigations and evaluations during FY 2019. OSA staff surveyed proposed roads, highways, sewer lines, urban development areas, cell towers, wetlands, parks, wastewater plants, water shed and drainage improvements, and drinking water facilities.



Thermal Aerial Survey at Lime City

The OSA conducted a thermal imagery analysis of portions of a late 1800s industry town, Lime City, Cedar County, Iowa, as part of a larger Phase I archaeological survey along Interstate 80 for the Iowa Department of Transportation.



Palmquist Collection

In Fiscal Year 2019, long time Iowa Archeological Society member John Palmquist donated his extensive collection of archaeological finds to the OSA. With the aid of a Historic Resources Development Program (HRDP) grant, the OSA is cataloging and curating the collection for future researchers.

[Return to Research](#)

[Return to Table of Contents](#)



Infrastructure Surveys

The OSA conducted over **300** archaeological and architectural projects in FY 2019, significantly contributing to the enhancement of statewide economic development.

Iowa Department of Transportation

FY 2019 marks 49 years of contracted services with the Iowa DOT for archaeological investigations and 30 years of historic architectural evaluations. Cultural resource investigations were reported in four Phase I survey Technical Reports for Primary Roads projects. A total of 100 Phase IA Cultural Resource Evaluation reports were submitted. Several project types received archaeological surveys during the

2018–2019 period including a wetland mitigation, bank stabilizations, and improvements to state and interstate highways including Interstate 80, I-380, I-31, and Highway 20. Historic architectural surveys were also conducted along with archaeological surveys for a traffic incident management training facility project and for Interstate 80 improvements. In addition, one repatriation project related to human remains disturbed during a 1958 earth-borrowing for Interstate 29 was conducted during the fiscal year (see [Bioarchaeology](#) section). The project along Interstate 80 also involved thermal imagery utilizing small uncrewed aerial vehicle (sUAV), or drone, piloted by a FAA-licensed staff member at the OSA (see [Thermal Aerial Survey at Lime City](#) section).

Water Projects

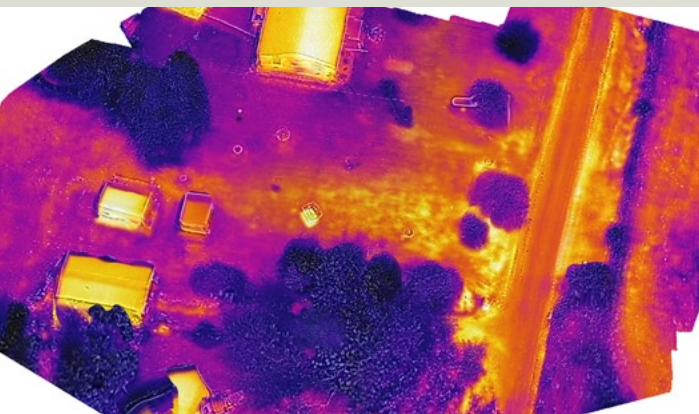
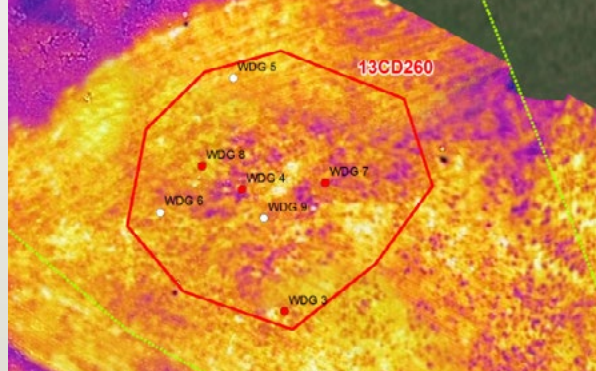
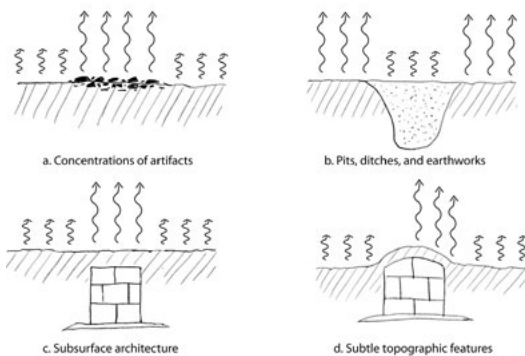
At least 22 projects were completed in FY 2019 for water improvement projects, such as restoring wetlands, improving water drainage, and drinking water infrastructure. Two such projects include an a small archaeological survey at Terrace Hill in Des Moines and a large archaeological survey at Herbert Hoover National Historic Site (HEHO) in West Branch, Iowa. The Terrace Hill project was for a water drainage improvement project planned for the front yard of the estate and the HEHO project was for proposed stream realignment and water retention pond to prevent future flooding of Hoover Creek. The HEHO project involved the hand excavation of 180 deep to very deep auger tests, some of which were in the backyard of Herbert Hoover's birthplace cottage!



[Return to Investigations](#)

[Return to Research](#)

[Return to Table of Contents](#)



Thermal Aerial Survey at Lime City

The OSA utilizes 3D modeling and thermal photogrammetry techniques acquired from FAA licensed drones. Including Mary De La Garza, the Research Technology Director, three staff members at OSA are currently licensed by the FAA to pilot small unmanned aircraft systems (sUAS). Visit the [Research Technology](#) page for details about our drones and other OSA instruments.



Thermography

The OSA conducted a thermal imagery analysis of portions of a late 1800s abandoned industry town, Lime City, in Cedar County, Iowa, as part of a larger Phase I archaeological survey along Interstate 80 for the Iowa Department of Transportation. With the utilization of sUAS (a.k.a. drones) to target specific areas for detailed analysis and with the availability of small-mountable thermal digital cameras, thermography can be a very useful tool in the archaeological toolbox for understanding what is below the ground. Thermal analysis is all about capturing contrast. The types of archaeological features that typically are visible in thermal imagery include pits, ditches, field boundaries, roadways, foundation walls, and similar features with a near or below ground surface expression.



Lime City General Store

Measurements

Sp1	80.7 °F
Sp2	91.9 °F
Sp3	116.2 °F

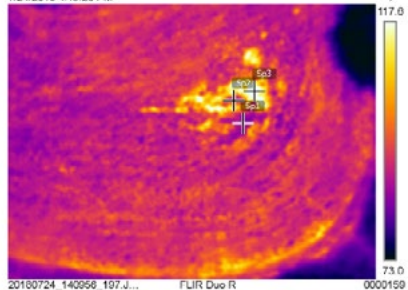
Parameters

Emissivity	1
Refl. temp.	89.0 °F

Note

General Store

7/24/2018 4:19:26 PM



7/24/2018 4:19:26 PM



[Return to Investigations](#)

[Return to Research](#)

[Return to Table of Contents](#)



Palmquist Collection

In 2018, long time Iowa Archeological Society member John Palmquist approached the OSA about the matter of donating his extensive collection of archaeological finds. As a longtime avocational archaeologist, honorary member of the Iowa Tribe of Kansas and Nebraska, and generally stand-up fellow, John has a long history in Iowa archaeology. He received his site surveying certification from previous state archaeologist Duane Anderson in 1977, and for many years put it to good use in the back yard (sometimes literally) of his Stanton, Iowa home, along with his son, the late Phil Palmquist.

As responsible and considerate stewards of Iowa's archaeological record, John and Phil always sought permission before collecting, and always recorded where items were located. They never sold artifacts, were always willing to engage the public on their historical and cultural importance and contributed extensively to the Iowa Site File. In total, the Palmquists reported a total of 73 archaeological sites in southwestern Iowa, a number which includes sites discovered by John or Phil as well as those from other collectors. An impressive one-quarter of all known sites in Montgomery County alone were recorded thanks to John and Phil.

With the aid of a Historic Resources Development Program (HRDP) grant, most of the Palmquist collection was transferred into OSA hands in September, 2018, with the goals for thorough cataloging and curation for future research.

Captions

Upper Left: John Palmquist (left-center) visiting the OSA with his wife Charlotte (right), with State Archaeologist John Doershuk (left) and Project Archaeologist Warren Davis (right-center).

Lower Left: University of Iowa undergraduates Keeley Kinsella, Jacqueline O'Neill, and Maizy Fugate presenting their poster on their research of the John and Phil Palmquist Collection at the 2019 Spring Undergraduate Research Festival.



[Return to Investigations](#)
[Return to Research](#)
[Return to Table of Contents](#)



Research Collections

The OSA continually adds archaeological materials and related documents to the State Archaeological Repository and provides materials for local, regional, and national exhibition and research purposes. Highlights in FY 2019 include:

Collections Research

Recently, the OSA acquired a collection from a Great Oasis culture village site in Plymouth County, Iowa, West Broken Kettle (13PM25). This collection is from a 1969 University of Nebraska field school excavation led by Dale Henning. West Broken Kettle is believed to have had up to twenty-five houses. The newly acquired collection is from three of these houses. OSA staff members are actively preparing the collection for curation. OSA Adjunct Research Associate, William Green, facilitated transfer of 13PM25 botanical material from the collection to OSA. Bill is currently working on an analysis of these materials and notes associated research by a colleague, Natalie Mueller (Washington University—St. Louis), suggests *Polygonum erectum* (erect knotweed) seeds dating to ca. 960 BP from 13PM25 may be semi-cultivated. Bill reports this is important new data about plant use at the site.

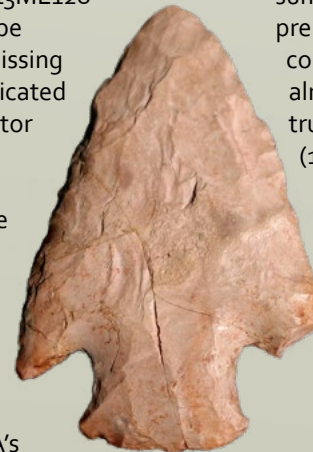
81 collections accessioned this fiscal year

7 collections loaned this fiscal year

272,620 total document records

91% available digitally

A long-lost artifact has been found! It is a Havana Hopewell Snyder's corner-notched point. It was first pictured in a journal article in 1975 by then state archaeologist Marshall B. McKusick and reported as coming from site 13ML128. Stephen C. Lensink, OSA's Associate Director and co-lead investigator of current research which includes 13ML128 recently inquired if the point could be examined. But it was found to be missing from the collection. Steve communicated with John A. Hotopp, lead investigator of the 1971 13ML128 excavations which resulted in discovery of this distinctive artifact. Steve asked if he remembered the point and learned from John an important clue, that the point had been accidentally broken during lab work. This fact led John L. Cordell, OSA's Research Collection Director, to discover the long-missing artifact in the OSA's comparative projectile point collection!

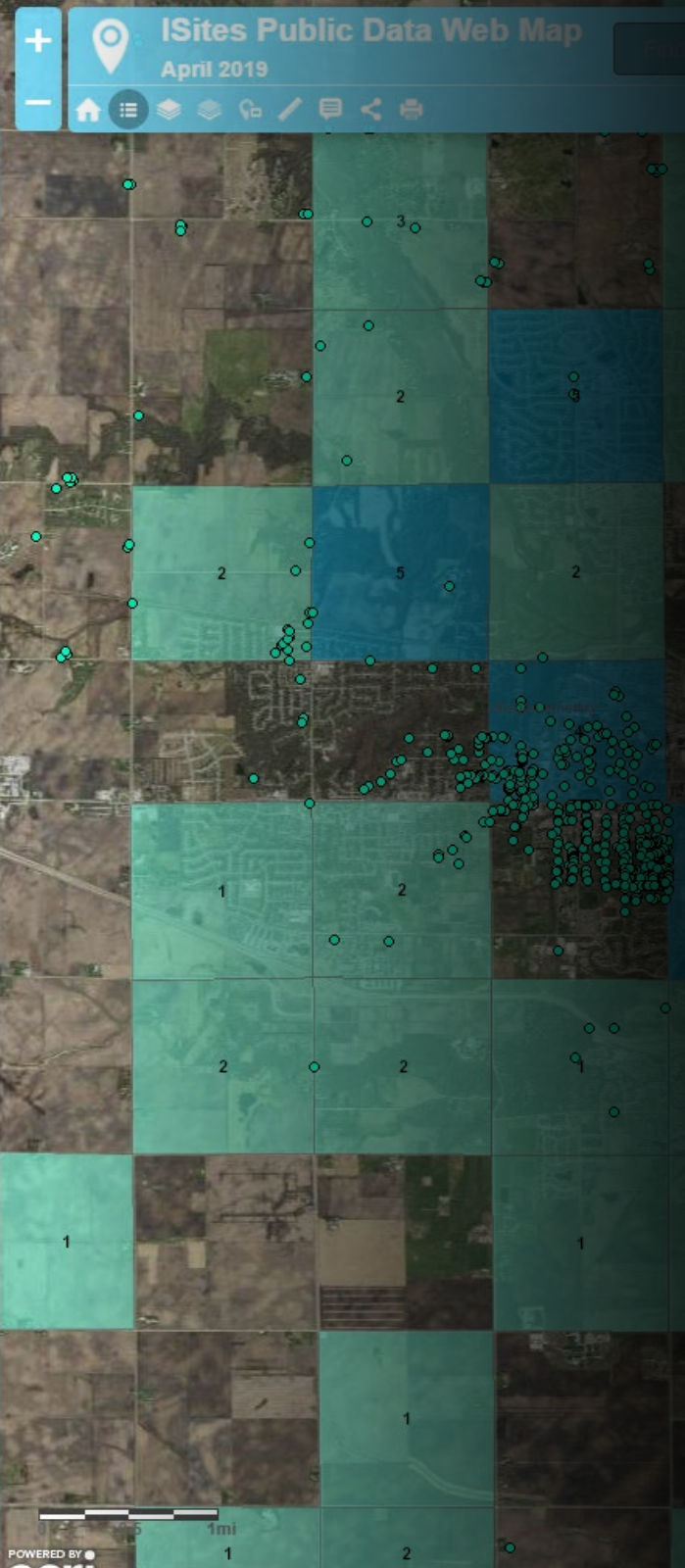


Comparative Collection

The OSA has expanded its bone comparative collection with the addition of a trumpeter swan. John Cordell and Seraphina Carey, OSA's Collection Assistant, directed OSA staff and volunteers over the summer and fall months in dissecting, cleaning, and preparing the bird for inclusion in the comparative collection. The swan, nicknamed "Remy," has already aided researchers by being used to identify trumpeter swan remains from the Dixon Site (13WD8). The preparation process also led to presentations at OSA and elsewhere, providing valuable work experience, research material, and education outreach for both the scientific community and members of the public.

[Return to Research](#)

[Return to Table of Contents](#)

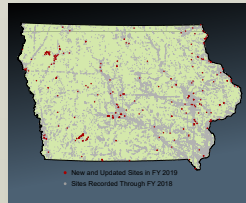


Research Technology

OSA's commitment to conducting and disseminating modern high-quality archaeological research requires a major investment in research technology. From maintaining complex databases, to deploying a suite of scientific instruments and equipment, to supporting an array of Internet and other social media, the OSA's involvement in research technology covers the gamut of twenty-first century breakthroughs in archaeology. In FY 2019 planning began for the transition to ECR FieldPro as the online Iowa Site File access portal, replacing I-SitesGIS. The software affords its users the ability to use project area maps without a 4G or internet connection. It also allows users the ability to save data in the cloud.

Fiscal Year 2019 Numbers

- 345** new site shapes in site file
- 30,094** total sites recorded in Iowa
- 175** data searches
- 335** registered I-SitePro users
(132 Full / 203 Basic)



Iowa Site File

Most archaeological sites are recorded in the Iowa Site File as a result of cultural resource surveys conducted by professional archaeologists. Some, however, are reported by landowners, avocational archaeologists, and other non-professionals.



Field and Laboratory Technology

Many of OSA's research endeavors require the use of highly specialized scientific technology in both the field and laboratory setting.

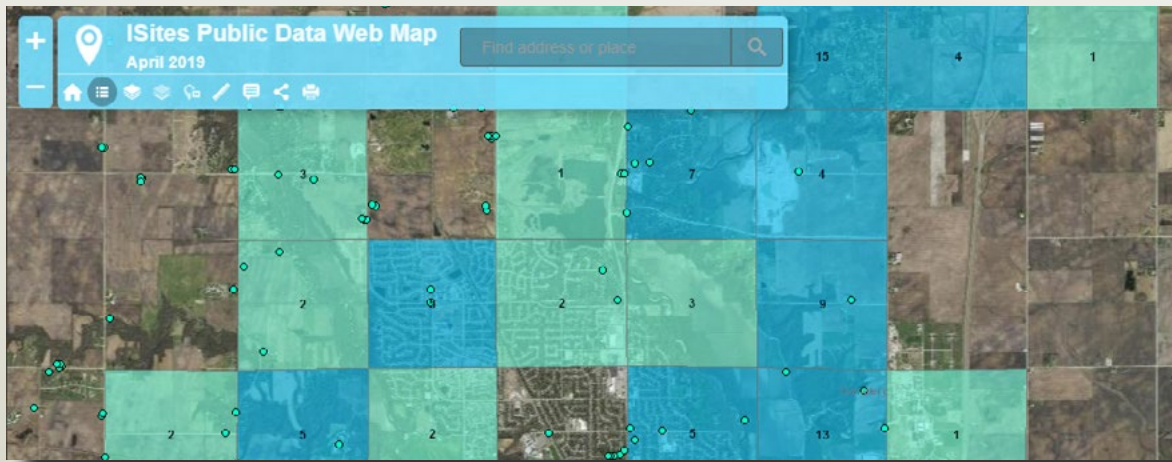


Website and App Development

During FY 2019 the OSA conducted and completed 2 major portal rebuilds for the Plains Anthropological Society, and the Midwest Archaeological Conference. The OSA continued its management of the [Plains Anthropological Society](#), the [Midwest Archaeological Conference](#), I-SitesPro, I-Sites Public, I-SitesGov, [ancient trails in Iowa](#), [Paleocultural Research Group of Colorado](#), Iowa Blood Run Cultural Landscape Master Plan, and [BloodRunNHL](#) portals.

[Return to Research](#)

[Return to Table of Contents](#)



Iowa Site File

Most archaeological sites are recorded in the Iowa Site File (ISF) as a result of cultural resource surveys conducted by professional archaeologists. Some, however, are reported by landowners, avocational archaeologists, and other non-professionals.

Each archaeological site recorded in the ISF contains information in a relational database and their locations are stored in a geographic information system database. Revenue generated from site searches and I-SitesPro license fees help to offset program costs to maintain the system.

I-SitesPublic Access

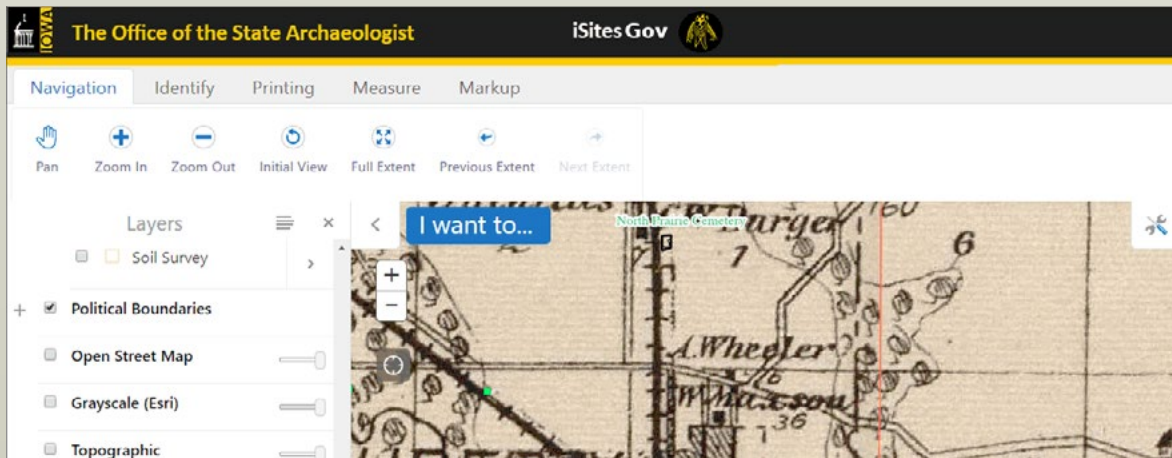
Information from the ISF is also provided on the World Wide Web. The I-SitesPublic Internet map server (archaeology.uiowa.edu/i-sites) provides users with access to maps of all 99 Iowa counties showing the locations of Public Land Survey System square-mile sections where archaeological sites have been recorded.

I-Sites Gov

This service is intended for use by non-archaeologists. It is a low-cost fee-based website with mobile applicability that provides quarter-section location of archaeological sites to aid in government, state, and local planning. To learn more about I-Sites Gov and how to obtain a license, contact the [Site Records Manager](#) (319-384-0735).

I-SitesPro

This password-protected website (www.iowaisites.com) provides qualified professional archaeologists and their staff with access to more detailed data on archaeological sites and related information from OSA's archives. This level of access includes recorded archaeological site locations and previously archaeologically surveyed areas.



[Return to Research Technology](#)

[Return to Research](#)

[Return to Table of Contents](#)



Field and Laboratory Technology

Many of OSA's research endeavors require the use of highly specialized scientific technology in both the field and lab. In addition to high-powered research microscopes, global positioning systems and other equipment, the following devices were exploited in FY 2019 to assist a wide range of research activities.

Robotic Direct Aiming Total Station

In 2019 the OSA continued to utilize the Topcon DS-205AC direct aiming total station—a motorized total station with automatic aiming technology designed to be operated by one person with a rover prism. Survey accuracies are on the order of ± 2 mm.

Stable Isotope Analysis

Thanks to a partnership with Mount Mercy University and Iowa State University, OSA can now analyze bone samples to help quantify dietary components providing insight into human and animal diet, also hinting at environmental conditions and mobility. In FY 2019, this technology was used on materials collected from Bruggeman Cave (13JN12).

Drone for Archaeology

During FY 2019, OSA owned three quadcopter drones: a 3DR Solo and two DJI Phantom 3. These drones can be equipped with GoPro or FLIR thermal cameras able to capture surface and below surface data. The data from the sites are being used to create and view high-resolution 2D and 3D models in Pix4D, a cloud and desktop processing software. A thermography survey was conducted for an archaeological project at Lime City (see [Thermal Aerial Survey](#) page).

3D Scanning and Printing

OSA's NextEngine 3D Laser Scanner uses multi-laser scanning technology to create a 3D surface models and reproductions. The Scan Studio HD Pro software produces a textured model suitable for analysis and 3D printing. Examples of 3D scanned models of artifacts can be viewed on our [Sketchfab](#) page.



[Return to Research Technology](#)

[Return to Research](#)

[Return to Table of Contents](#)

Bioarchaeology

While still working closely with tribes that trace their heritage to Iowa, this year the Bioarchaeology Program also began reaching out to additional communities to work towards repatriation of human remains at the OSA that were collected from elsewhere in the U.S. Ancient human remains representing one individual were repatriated to the Pueblo of Acoma and reburied in southwest Colorado in collaboration with History Colorado, and remains representing three individuals were repatriated to Hawaii in collaboration with the Office of Hawaiian Affairs.

The Bioarchaeology Program also carried out our usual work with landowners who serve as site stewards, and local, state and federal agencies in upholding our responsibilities for ancient burial site and inadvertent discovery investigations and reporting, and the protection of sites potentially impacted by development.

[Indian Advisory Council Members](#)



In Memoriam: *Howard Crow Eagle (1952-2018) – This year saw the passing of Howard Crow Eagle, our long-standing advisor and friend. He is pictured here with former Burials Program Director, Shirley Schermer, at the Annual Prairie Awakening event held at the Kuehn Nature Center in Dallas County, where he was honored for his lifetime of service. In addition to serving on the Indian Advisory Council and with other conservation organizations in Iowa, he was also active in counseling homeless and troubled youth. He was a powerful guiding force for many and is deeply missed.*

UI Stanford Collection Research and Documentation

UI Students Alexis Williams and Keely Kinsella added an additional 27 osteological profiles to the database for the UI Stanford Collection.

We also hosted several visiting researchers and professionals from other institutions:

- Forensic anthropologists Jeff Lynch, Traci Van Deest, Megan Ingvoldstad, Katie Skorpinski, and Sarah Kindschuh - Defense POW MIA Accounting Agency – Offutt Laboratory (Omaha, NE):
- Wesley Vanosdall, PhD student - University of Wyoming
- Nathan Cao and Abioye Oshodi - UI Medical School

3D Documentation of Ancient Human Remains

Jenna Hentrich and Melissa Hamilton added 149 3D models to our collection of digitized ancient human remains, completing the task of scanning all diagnostic elements in our collection of ancient remains!

For her outstanding accomplishments and dedication to volunteering in the OSA Bioarchaeology Lab, Jenna Hentrich was awarded Volunteer of the Year! She contributed 550 hours of her time to 3D scanning and model processing.

Iowa counties represented in FY 2019	45
Ancient burial site investigations/reports	23
Consultation for development projects	38
Inadvertent discovery investigations	13
Repatriations	2
NAGPRA Notices of Inventory submitted	3
NAGPRA Summary submitted	1
Research Papers published	1

[Return to Table of Contents](#)

Strategic Initiatives



The OSA provides resources and opportunities that encourage the understanding, appreciation, and stewardship of Iowa's archaeological past. Events took place in 45 Iowa counties reaching **over 22,000 people**.

Community/Public Presentations **1251**

Special Interest/Private Lectures **406**

K-12 Presentations/Tours **618**

Higher Education Lectures/Workshops **178**

Professional Conferences **913**

Exhibit Booth or Outreach Tent **1,293**

Mobile Museum **17,825**

Total 22,484



Exploring Iowa Archaeology in the K-12 Classroom

The OSA develops and presents a variety of activities for K-12 audiences that are interdisciplinary, inquiry-based, hands-on, and based on current classroom content and teacher needs. OSA's success keeps it busy collaborating with archaeology education leaders across the nation.



Bringing Archaeology to Iowa Communities

Project AWARE and the Meskwaki Powwow are just some of the events and programs that engaged thousands of Iowans this past year.



UI Mobile Museum

For five years, the OSA was part of a collaborative team with the Office of the Vice President for Research and Economic Development and the Pentacrest Museums for the development and administration of the UI Mobile Museum, its exhibits, and resources for educators.



Iowa Archaeology on Social Media

In addition to the OSA webpage, Iowa Archaeology social media accounts bring the archaeology of our community to tens of thousands of people across the world.

[Return to Table of Contents](#)

Exploring Iowa Archaeology in the K–12 Classroom

A total of 618 K–12 students in five Iowa counties participated in archaeology presentations, activities, tours, and field trips with OSA staff. Many of these presentations involved, [Exploring Iowa Archaeology in the K–12 Classroom](#) activities. This program is awarded with the Governor’s STEM Advisory Council Seal of Approval. OSA staff reached over 2,000 additional K–12 students through educational resources, including archaeology [Discovery Trunks](#) and curricula used by teachers across the state.

The U.S. Bureau of Land Management’s [Project Archaeology](#), a national archaeological education program active in 42 states and the District of Columbia, continues to be an integral part of OSA’s education and outreach activities. OSA’s Director of Strategic Initiatives, Elizabeth Reetz, integrated Project Archaeology’s Investigating a Midwestern Wickiup curriculum, created at the OSA by Lynn Alex and others, into her week-long archaeology course for the [Belin-Blank Center’s Junior Scholar Institute](#). Ten middle school students in the course learned about the OSA and Iowa Hall, Iowa’s Native cultures, and techniques for documenting archaeological sites. The week culminated in a field trip to the Macbride Nature Recreation Area where the students documented a previously unrecorded archaeological site.



Over the winter, Elizabeth was accepted into the [2019 Science Friday Educator Collaborative](#), a competitive nationwide program that selects STEM educators to work with Science Friday staff to produce multimedia-driven educational K-12 resources. Elizabeth’s [resource on archaeobotany](#) was in production throughout the spring and published in August 2019.

Beyond the classroom, the OSA has been promoting Iowa’s education program successes and contributing to the field of archaeology education on a national level. Elizabeth, who serves on the Project Archaeology leadership team member, helped Project Archaeology staff to plan and coordinate the 3rd biennial National Archaeology Educator’s Conference held last November in La Crosse, WI, and at Effigy Mounds National Monument (EFMO). The conference focused on storytelling and creating stronger connections with Tribal communities, and included attendees from 14 states and guest speakers from the Ho-Chunk Nation, Bad River Band of Lake Superior Chippewa, National Geographic Explorers, and EFMO. Read Elizabeth’s conference recap on pages 5-6 of this [Project Archaeology newsletter!](#)



Last August, Elizabeth attended the 22nd Annual Wisconsin American Indian Studies Summer Institute to learn how to improve OSA’s outreach with and for American Indian communities and meet other educators dedicated to culturally responsive teaching and better understanding issues related to history, culture, and tribal sovereignty. In November, she staffed the National Council for Social Studies annual meeting exhibit booth in Chicago on behalf of the Society for American Archaeology (SAA) and Archaeology Education Clearinghouse and taught a Project Archaeology workshop to teachers on the archaeology of food. Elizabeth also presented on archaeology education and social media use in public archaeology at the Society for American Archaeology (SAA) annual meeting in April, and began her second three-year term as the SAA’s Public Education Committee chairperson. She participated in a session on evaluation and assessment and published a review of the session in the [Journal of Community Archaeology and Heritage](#).

Together, Elizabeth, OSA’s Cherie Haury-Artz, and University of Iowa Recreational Service’s Jay Gorsh [published a book chapter](#) on the integration of archaeology and environmental education at School of the Wild. This follows up on a grant that OSA previously received through the Department of Natural Resources Resource Enhancement and Protection Conservation Education Program (REAP-CEP) to create a full-day curricular unit on archaeology for the University of Iowa Recreational Services’ School of the Wild Program. Each school year, over 1,100 students and teachers learned about human interaction with the land through scientific inquiry, focused on simple shelter building, a Meskwaki wickiup, and the ruins of a historical farmstead at the Macbride Nature Recreation Area. This continues to be a strong component of the School of the Wild program, and future expansions of the program are anticipated.

[Return to Strategic Initiatives](#)

[Return to Table of Contents](#)

Bringing Archaeology to Iowa Communities

OSA staff reached over 2,950 people in 20 Iowa counties, Wisconsin, Illinois, and South Dakota this past fiscal year to give public community presentations and private lectures or staff an exhibit table or outreach tent. An additional 25 counties were reached through archaeology outreach via the UI Mobile Museum. The OSA provided programming and assistance to educational, historical, cultural, environmental, community, and tribal organizations statewide, including but not limited to: the UI, Iowa Archeological Society (IAS), Kirkwood Community College, Meskwaki Nation, and several Iowa county conservation boards.

Project Aware

The OSA participated in the 16th annual Project AWARE, coordinated by N-Compass, Inc. Project AWARE (A Watershed and River Expedition) took place on the Maquoketa River in Delaware, Jones, and Jackson counties from July 8-13, 2018. OSA Staff Cherie Haury-Artz and Elizabeth Reetz were “resident archaeologists” for the week. They were joined by archaeologist Joe Artz, as well as several Iowa Archeological Society members. Over the course of five days, 20.8 tons of trash were removed from a 63-mile stretch of river, and 69 percent of that trash was recycled. Elizabeth did a make-and-take rock art activity for kids (and adults) of all ages, Cherie presented on the archaeology of the Maquoketa Caves area, and both led an atlatl/spear-throwing activity.



The 104th Annual Meskwaki Powwow

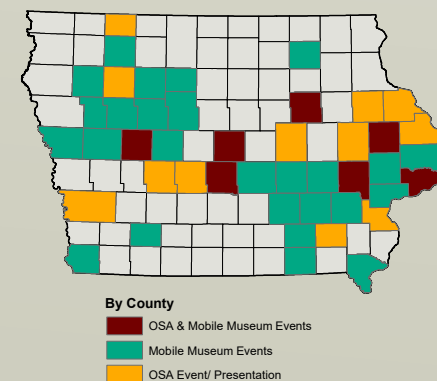
The Meskwaki Annual Powwow is one of OSA's biggest community events each year, and OSA has partnered with the Meskwaki Tribal Museum to exhibit at the Powwow for over a decade. This year, the archaeology outreach booth reached about 800 Powwow visitors who viewed the archaeological timeline display, played traditional toys and games, received temporary tattoos, and talked with staff about archaeology and Iowa history. Staff from the UI Stanley Museum of Art joined OSA at their exhibit booth for one day of the event.



Engaging with the Interested Public through Heritage Preservation Organizations

The OSA continues to foster strong relationships with heritage preservation organizations across the state. A long-standing partnership with the Iowa Archeological Society (IAS) helps OSA connect with Iowans, particularly in rural regions, who have a special interest in archaeology. OSA staff members serve on the IAS Board of Directors, attend and present at the spring and fall meetings, and contribute to both the annual *Journal of the Iowa Archeological Society* and the quarterly *Newsletter of the Iowa Archeological Society*. The IAS makes a generous annual contribution to the OSA to help fund education and outreach activities across the state.

Public Presentations in Iowa, FY 2019



[Return to Strategic Initiatives](#)

[Return to Table of Contents](#)



UI Mobile Museum

Until late 2018, the OSA was part of a collaborative team with the UI's Office of the Vice President for Research and Economic Development and the Pentacrest Museums for the development and administration of the UI Mobile Museum. The Mobile Museum had new exhibits each calendar year for the past five years, which were open to the public from April 1 through October 31. OSA contributions to the Mobile Museum in 2018 included the development of exhibits with partners from across campus, *Wild Iowa: Awareness, Appreciation, and Action* and *A Matter of Scales: Pangolins in Peril*. As an added component to engage students before their visit, OSA created [a video to introduce the Mobile Museum](#) for classroom teachers.

The Mobile Museum's season from April 1 through the end of FY 2018 (June 30, 2018) was documented in last year's annual report. During that time, the 2018 Mobile Museum exhibits traveled to 17 counties. From July 1 to October 31, 2018 (FY 2019), the Mobile Museum exhibits traveled to 35 counties, with a total of 43 different counties over the entire 2018 season. In addition to OSA and Pentacrest staff, the Mobile Museum employed a coordinator, assistant coordinator, three student docents, and a Museum Studies intern.

By assisting as Mobile Museum educators in FY 2019, OSA staff reached an additional 17,825 lowans, bringing the total OSA face-to-face interactions with a public audience to **22,214** people. The total number of visitors reached by the Mobile Museum exhibits for the 2018 season was 27,463. Over the duration of the Mobile Museum's five-year run, the project reached 162,031 people at 344 events in 89 Iowa counties and Omaha, NE.



[Return to Strategic Initiatives](#)

[Return to Table of Contents](#)

@IowaArchaeology

The education and outreach content on the OSA website remained a vigorous, interactive conduit between the public and the OSA. The OSA's social media pages were an important venue for disseminating news and program information in FY 2019. Active social media platforms administered by the OSA include [Facebook](#), [Twitter](#), [Tumblr](#), [Instagram](#), and [YouTube](#).



4,096 followers ↑ 853
450,174 total daily views

The number of unique Facebook users who actively engaged with content through likes, comments, shares, or clicks averaged 90 per day, with a maximum of 1562 people. A sum of the total daily number of people who viewed content associated with the page for FY 2019 equals 450,174!

The most popular post, a late spring reminder of the "**Archaeological Sites and Museums to Visit in Iowa**" Google map project created last autumn, was served to a total of 16,086 people, with 1,436 unique engaged users, 129 likes, and 21,484 total impressions, demonstrating the platform's powerful potential in terms of engagement and outreach.



2,366 followers ↑ 51
45,400 impressions

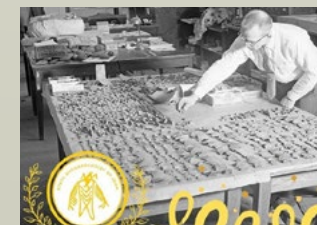
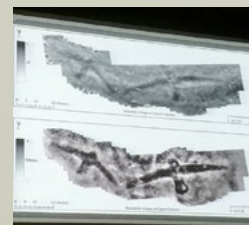
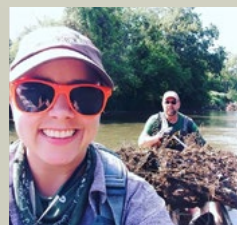
Over the course of the fiscal year, impressions (the number of times a Twitter user saw an Iowa Archaeology tweet) totaled 45,400, with an average of **125 impressions per day**. The most engaging tweet, seen by 2,282 people, promoted the interactive Google map project when it was released during Iowa Archaeology Month in September 2018.



17,813 followers
↑ 498



1,327 followers
↑ 87



3,553 unique views
↑ 38 subscribers

The most popular Iowa Archaeology YouTube videos are from the **Ancient Iowa Film Series** produced by former State Archaeologist Marshall McKusick in the 1970s.

[Return to Strategic Initiatives](#)

[Return to Table of Contents](#)

OSA Mission

The primary mission activities of the University of Iowa (UI) Office of the State Archaeologist (OSA) consist of developing, disseminating, and preserving knowledge of Iowa's human past through Midwestern and Plains archaeological research, scientific discovery, public stewardship, service, and education.

The position of State Archaeologist was established in 1959; the Code of Iowa specifies the State Archaeologist shall be a member of the faculty of the Department of Anthropology at the UI. The OSA is an organized research unit of the University, meaning that the State Archaeologist, who is appointed by the Iowa State Board of Regents, directs the OSA and reports to the UI Vice President for Research and Economic Development.

The State Archaeologist consults regularly with the OSA Advisory Committee, whose members include on- and off-campus colleagues, and with the OSA Indian Advisory Council, whose members include individuals from several tribes.

Advisory Committee

What they do:

The Advisory Committee's primary purpose is to provide a structure through which the State Archaeologist, the Vice President for Research and Economic Development (VPRED), and constituency representatives may jointly discuss the creation, implementation, and execution of policies and activities that broadly affect archaeological research, education, and stewardship in Iowa. Final authority regarding the acceptance and implementation of Advisory Committee suggestions lies with the VPRED, in consultation with the State Archaeologist.

FY 2019 Members:

Colin M. Betts (Luther College)

Gail Barels (Wickiup Hill Outdoor Learning Center)

Johnathan Buffalo (Sac and Fox Tribe of the Mississippi in Iowa)

David M. Gradwohl (Iowa State University)

Suzanne Wanatee Buffalo (Sac and Fox Tribe of the Mississippi in Iowa)

Lance Foster (Iowa Tribe of Kansas and Nebraska)

Jim Nepstad (Effigy Mounds National Monument)

Eleisha Barnett (Iowa Archeological Society)

Ann Ricketts (University of Iowa)

Leah D. Rogers (Tallgrass Historians L.C.)

Holmes A. Semken, Jr. (University of Iowa)

Glenn R. Storey (University of Iowa)

Steve King (State Historical Society of Iowa)

Indian Advisory Council

What they do:

The OSA interacts frequently with Indian tribes and communities on matters of mutual interest and concern. The OSA Indian Advisory Council includes representatives from several Indian communities in Iowa. Through regular meetings and informal consultation, Indian Advisory Council members and OSA staff members share information and address issues relating to Indian burial sites, human remains, repatriation, and other topics.

FY 2019 Members:

Donald Wanatee (Meskwaki Nation)

Suzanne Wanatee Buffalo (Meskwaki Nation)

Jacki Rand (Choctaw Nation of Oklahoma)

Lance Foster (Iowa Tribe of Kansas and Nebraska)

Joe Coulter (Citizen Potawatomi Nation)

Mark Ravenhair (Ogalala Sioux, Apache)

Erich Longie (Spirit Lake Nation)

Brown Bags

Brown Bag at the OSA is a regular series through which OSA staff and guests share their research over the lunch hour. Topics include individuals' areas of interest, work in the field, and recent developments in archaeology and architectural history throughout Iowa and the Midwest. Presentations are free and open to the public and are held in OSA's main laboratory. Attendees are encouraged to engage in discussion and exchange following the presentation.

Date of Presentation	Presenter	Association	Title	In Attendance
12/7/2018	Jennifer Mack	University of Iowa	What Hope Lies Buried Here: Differential Mortality and Mortuary Treatment of Adolescents in Dubuque's Third Street Cemetery	30
1/18/2019	Bryan Kendall	University of Iowa	Where is the Weir? Relocating the Lost Amana Fish Weir	41
2/15/2019	Lara Noldner	University of Iowa	The Physical and the Digital: a test of the reliability of craniometric data collection from 3D models	27
2/22/2019	Warren Davis	University of Iowa	Preservation of the John Palmquist Collection from Southwestern Iowa	39
3/1/2019	Adam Skibbe and Michelle Wienhold	University of Iowa	More LiDAR – further adventures in historic and pre-historic cultural preservation... using lasers!	32
3/8/2019	Joseph A. Tiffany	University of Iowa	Exploring the Collections from the Phipps National Historic Landmark Site (13CK21)	25
3/15/2019	Dr. Luis Benítez de Lugo	Universidad Autónoma de Madrid and Universidad Nacional de Educación a Distancia	Excavations at the Bronze Age Ceremonial Center of Castillejo del Bonete (Terrinches, Ciudad Real, Spain)	30
3/29/2019	James Enloe	University of Iowa	Stratigraphy, occupations and disturbance: The complex depositional history of Woodpecker Cave	35

Students and Volunteers, Fiscal Year 2019

Grant-Supported Students

Name	Affiliation	Major	Year	Activity	Hours
Maizy Fugate	University of Iowa	Anthropology	Freshman	Palmquist Grant	300
Jacqueline O'Neill	University of Iowa	Anthropology	Freshman	Palmquist Grant	300

Work-Study Students

Name	Affiliation	Major	Year	Activity	Hours
Robert Lepcin	University of Iowa	Anthropology	Junior	Collections	119
Alexa Santaniello	University of Iowa	Anthropology	Junior	Collections	453

Student Volunteers/Interns

Name	Affiliation	Major	Year	Activity	Hours
Diana Garcia	University of Iowa	Anthropology	Graduated Senior	Collections	20
Jacob Hoech	University of Iowa	Anthropology	Junior	Research	51
Emma Freerks	Solon High School	College prep	Senior	Collections internship	20
Charlene Miller	Iowa City City High School	College prep	Junior	Collections internship	20
Keeley Kinsella	University of Iowa	Anthropology	Sophomore	Bioarchaeology research	16
Jillian Schulte	Cornell College/Intern	Anthropology	Junior	Collections	135
Emma Newman	Cornell College/Intern	Anthropology	Senior	Research	135
Riley Pacer	University of Iowa	Anthropology	Senior	Iowa Site File	32
Alexis Williams	University of Iowa	Anthropology	Junior	Bioarchaeology research	108
Boyuan Yao	University of Iowa	Computer Science	Senior	Iowa Site File	60
Ryan Lange	University of Northern Iowa	GIS	Graduate	Iowa Site File	32
Latrell Burden	University of Iowa	Computer Science	Senior	Iowa Site File	32
Siau-Tong Ding	University of Iowa	Anthropology	Junior	Research	114
Kylie Shields	University of Iowa	Anthropology	Freshman	Collections	49
Lara Bampffield	University of Iowa	Art History	Senior	Collections	31

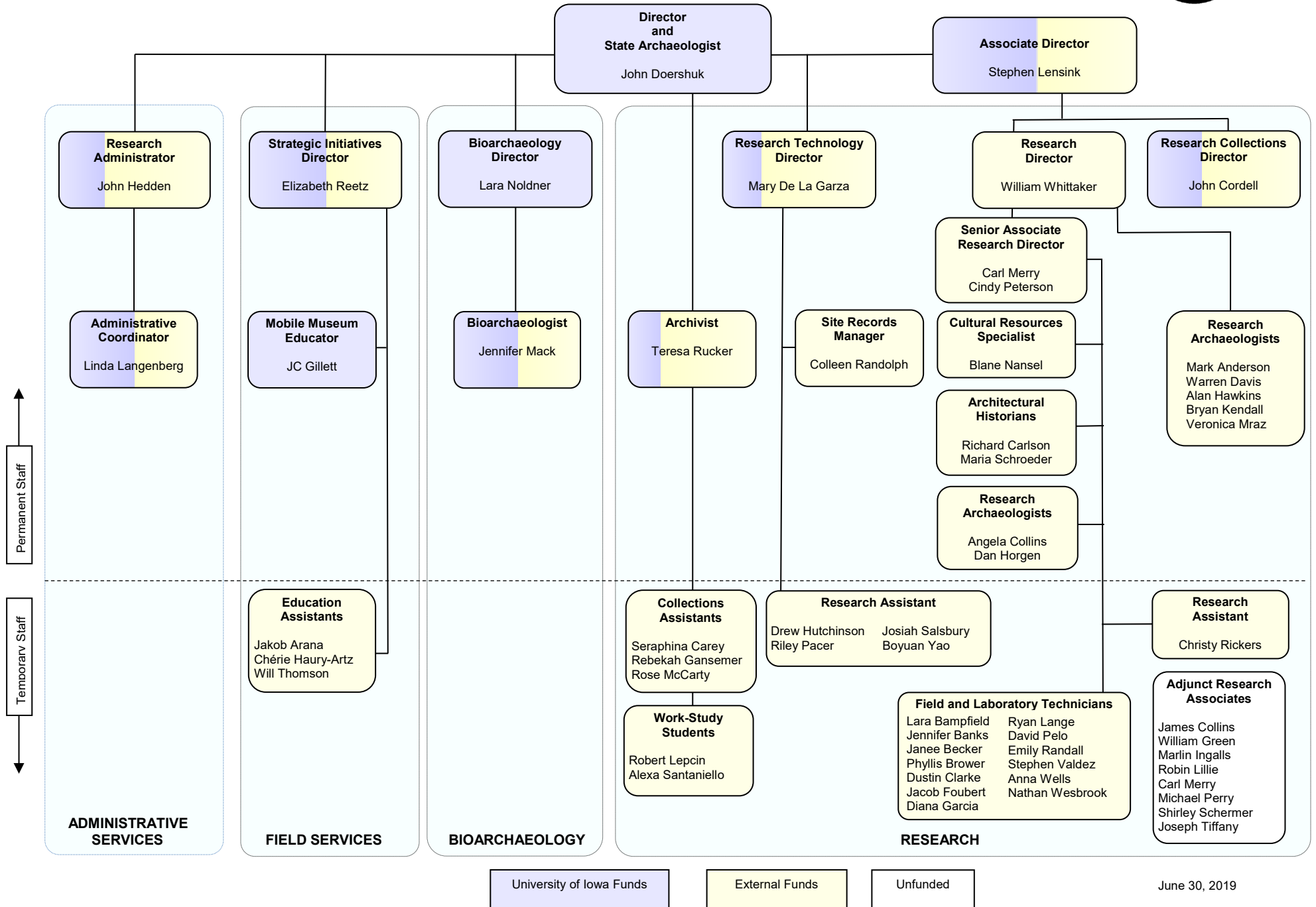
Public Volunteers/Independent Researchers

Name	Affiliation	Activity	Hours
William "Bill" Moore	Quad Cities Iowa Archeological Society	Research	164
Melissa Hamilton	Iowa Archeological Society	Bioarchaeology research	120
Jenna Hentrich	University of Iowa alumna	Bioarchaeology research	550
Patrick "Pat" Collison	Iowa Archeological Society	Research	137
James "Jim" Zalesky	Iowa Archeological Society	Research	40

Total Hours

3,058

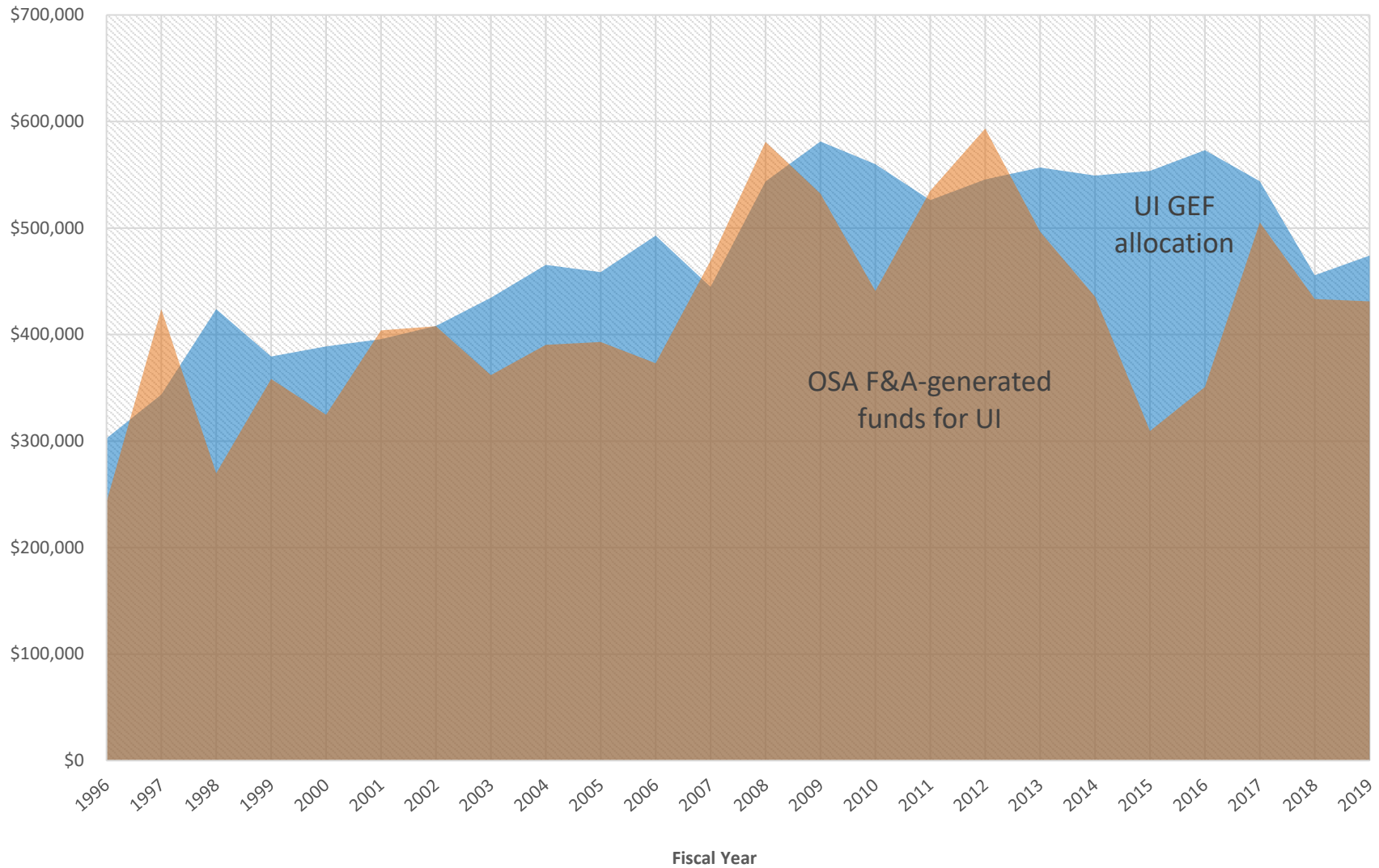
**Office of the State Archaeologist
The University of Iowa
Organizational Chart
2019 Cumulative**



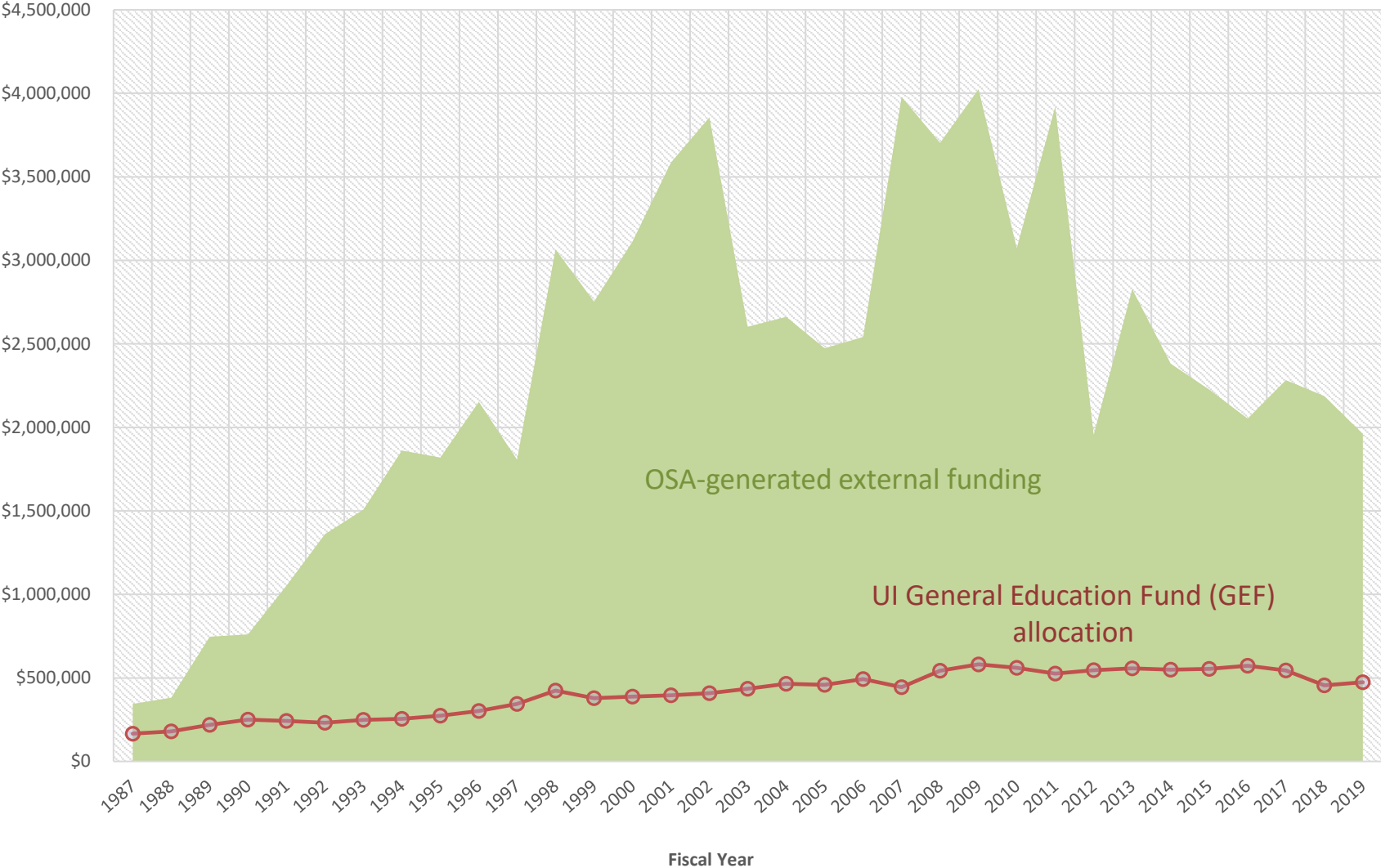
University of Iowa General Education Fund Support for
Office of the State Archaeologist Operations,
Fiscal Year 2019

Salaries	\$335,889
Fringe Benefits	\$130,998
Subvention	\$920
General Expenses	\$11,138
Safety Equipment	\$1,022
Bioarchaeology	\$4,494
Total	\$484,461

General Education Fund (GEF) Received vs. Facilities & Administrative (F&A) Costs Generated



OSA Funding Levels, 1987-2019



Funding Received from Gifts, Fees, and Endowments, Fiscal Year 2019

Bioarchaeology	\$4,150
Curation Services ¹	\$70,200
Strategic Initiatives	\$4,126
Research Technology	\$70,617
Publications	\$1,279
Research	\$23,793
Gifts/Return on Endowments	\$27,086
Total	\$201,125

¹ Includes conservation easement payments and return on endowment fund.

Office of the State Archaeologist Budgets, Fiscal Years 1987–2019

Fiscal Year	University of Iowa GEF ¹ Support ²	Research Incentive Funds ³	Gifts, Fees, and Return on Endowments ^{4,5}	Grants and Contracts	Total	% Non-GEF Support	Facilities and Administration Returns
1987	\$166,378	—	—	\$343,814	\$510,192	67.4	—
1988	\$180,450	—	—	\$381,611	\$562,061	67.9	—
1989	\$218,321	—	—	\$746,440	\$964,761	77.4	—
1990	\$250,721	—	—	\$758,115	\$1,012,228	75.2	—
1991	\$241,892	—	\$3,392	\$1,032,124	\$1,294,682	81.3	—
1992	\$231,763	—	\$20,666	\$1,355,345	\$1,591,936	85.4	—
1993	\$248,162	—	\$4,828	\$1,503,660	\$1,755,747	85.9	—
1994	\$255,391	—	\$3,925	\$1,860,710	\$2,117,096	87.9	—
1995	\$273,846	—	\$995	\$1,815,692	\$2,092,980	86.9	—
1996	\$302,603	—	\$3,442	\$2,143,301	\$2,455,503	87.7	\$242,812
1997	\$343,630	\$9,227	\$9,599	\$1,792,913	\$2,150,644	83.6	\$423,888
1998	\$423,937	\$16,108	\$4,874	\$3,044,573	\$3,490,368	87.4	\$269,706
1999	\$379,304	\$10,249	\$5,750	\$2,726,245	\$3,132,349	87.6	\$358,258
2000	\$388,748	\$13,614	\$16,551	\$3,085,581	\$3,502,231	88.5	\$324,627
2001	\$395,735	\$12,336	\$14,288	\$3,531,186	\$3,980,826	89.7	\$403,836
2002	\$408,102	\$15,346	\$41,569	\$3,791,216	\$4,265,078	90.1	\$407,757
2003	\$434,657	\$15,495	\$50,414	\$2,551,074	\$3,037,292	85.2	\$361,995
2004	\$465,291	\$13,756	\$36,066	\$2,589,257	\$3,126,918	84.7	\$390,363
2005	\$458,501	\$14,834	\$58,614	\$2,357,860	\$2,932,505	83.9	\$392,968
2006	\$492,868	\$14,933	\$101,310	\$2,474,091	\$3,031,824	83.2	\$373,047
2007	\$444,831	\$14,176	\$51,932	\$3,876,329	\$4,423,189	89.5	\$469,414
2008	\$543,708	\$17,838	\$87,853	\$3,471,418	\$4,246,459	86.5	\$580,886
2009	\$581,252	\$23,276	\$213,495	\$3,622,303	\$4,605,904	87.4	\$532,334
2010	\$560,044	\$22,115	\$379,073	\$2,854,434	\$3,634,397	84.6	\$440,829
2011	\$526,065	\$16,751	\$197,804	\$3,577,491	\$4,447,546	88.2	\$534,829
2012	\$545,644	\$22,549	\$327,239	\$1,607,403	\$2,501,457	78.2	\$593,395
2013	\$556,823	\$18,866	\$325,861	\$2,702,664	\$3,384,040	83.5	\$496,486
2014	\$549,183	\$16,548	\$105,687	\$2,257,603	\$2,929,998	81.3	\$435,478
2015	\$553,675	\$11,760	\$106,664	\$2,066,947	\$2,779,426	80.1	\$309,461
2016	\$573,010	\$13,326	\$127,227	\$1,912,317	\$2,625,880	78.2	\$350,678
2017	\$543,911	\$11,760	\$153,050	\$2,118,410	\$2,827,131	80.8	\$505,295
2018	\$455,671	—	\$288,461	\$1,898,736	\$2,642,868	82.8	\$433,275
2019	\$484,461	—	\$201,125	\$1,759,638	\$2,445,224	80.2	\$431,046

¹General Education Fund

²Safety equipment contributions by the University of Iowa (UI) are not included for any year prior to FY 2007, nor are they available for these years.

³Research Incentive funds first became available in FY 1997.

⁴Amounts for gifts are not available for FY 1987 through FY 2002. Gifts include return on the UI Foundation's endowment funds for the Office of the State Archaeologist.

⁵Amounts for fees and contributions are not available for FY 1987 through FY 1989. Totals for FY 1990 through FY 2000 and FY 2002 do not include I-Site Pro license and site search fees, and totals for FY 1990 through FY 1999 do not include Bioarchaeology fees.

Funding Received for Sponsored Research and Services, Fiscal Year 2019

SPONSOR	PROJECT	COUNTY	AWARD
Brown Pork LLC	archaeological survey of Brown project	Greene	\$1,449
Cedar Valley Habitat for Humanity	archaeological survey of Cedar Valley Habitat for Humanity development project	Linn	\$625
Cerro Gordo County Conservation	historic architectural review of a trail project	Cerro Gordo	\$4,098
Cherokee Historic Preservation Commission	National Register of Historic Places nominations for six locations	Cherokee	\$9,019
City of Bondurant	historic architectural survey of Bondurant parcel	Polk	\$14,828
City of Iowa City	National Register of Historic Places nomination for Historic District in Iowa City	Johnson	\$6,915
City of Kalona	archaeological survey of Achenback-Knipfer project	Iowa	\$3,635
	archaeological survey of Gent project	Iowa	\$3,635
	archaeological survey of Kriegel project	Iowa	\$4,681
	archaeological survey of O'Rourke project	Iowa	\$5,358
	historic architectural survey of East Iowa Bible Camp project	Iowa	\$8,316
City of Lake Park	archaeological survey of a Lake Park project	Dickinson	\$3,719
City of Webster City, IA	City of Webster City Downtown Revitalization project	Hamilton	\$15,000
David Berg	Bender Hall antenna project	Black Hawk	\$389
	archaeological survey and architectural history review of 40968 Hutchings Avenue tower project	Mills	\$1,382
	archaeological survey and architectural history review of Ewing Park tower project	Polk	\$2,253
DGR Engineering	archaeological reconnaissance of proposed pipeline project	Multi-County	\$3,236
	archaeological reconnaissance of a well field project	Osceola	\$3,363
Eunice O'Neil Estate	archaeological survey of a O'Neil estate project	Johnson	\$3,951
Genesis Equities LLC	archaeological survey of a Marion AirCom Park project	Linn	\$3,974
GSS Inc.	cultural resources evaluation	Iowa	\$678
	archaeological survey and architectural history review of Community State Bank tower project	Buena Vista	\$1,582
	historic architectural survey of Fairview Cemetery project	Appanoose	\$2,176
	archaeological survey and architectural history review of North English tower project	Johnson	\$2,201
	historic architectural review of USC Grimes antenna project	Polk	\$2,526
	archaeological survey and architectural history review of USC Fairgrounds project	Polk	\$2,950
	archaeological survey and architectural history review of Vinton tower project	Benton	\$4,527
	archaeological survey and architectural history review of Marengo tower project	Iowa	\$6,098
	archaeological survey and architectural history review of Williamstown tower project	Johnson	\$6,553
	archaeological survey and architectural history review of Albia tower project	Monroe	\$7,290
	archaeological and historic architectural review of 53 tower projects	Harrison	\$31,000
	Hart-Frederick Consultants	archaeological survey of HF Atwood development project	Johnson
archaeological survey of Twin Ponds Hollow development project		Johnson	\$1,591
archaeological survey of Kosterman Subdivision development project		Johnson	\$2,146
archaeological survey of Ellery Subdivision development project		Johnson	\$1,548
archaeological survey of Pigeon Timber Subdivision development project		Johnson	\$1,548
historic architectural survey of Utsler development project		Johnson	\$1,658
Iowa Army National Guard	archaeological survey and architectural history review of Wyn Gregor project	Johnson	\$1,966
	archaeological survey of a Sioux City parcel project	Woodbury	\$1,964
	archaeological review of Sioux City parcel project	Woodbury	\$2,278
	archaeological survey of National Guard Athletic Field project	Polk	\$9,858
Iowa County Drainage Districts	archaeological survey of a Waterloo parcel project	Black Hawk	\$9,868
	archaeological survey of Marengo Levee project	Iowa	\$19,479

Funding Received for Sponsored Research and Services, Fiscal Year 2019

SPONSOR	PROJECT	COUNTY	AWARD
Iowa Department of Agriculture and Land Stewardship	archaeological survey of Pleasant AML project	Lucas	\$2,259
	archaeological survey of a wetland project	Hardin	\$2,555
	archaeological survey of Heinz wetland project	Floyd	\$3,134
	archaeological survey of Brietzke wetland project	Cerro Gordo	\$3,223
	archaeological survey of a wetland project	Hardin	\$3,846
Iowa DNR	Revision of cultural resources project report	Cerro Gordo	\$500
	cultural resources evaluation of Manchester Fish Hatchery project	Delaware	\$500
	archaeological reconnaissance of Nora Springs project	Black Hawk	\$500
	cultural resources evaluation of SE 14th Bioswales project	Polk	\$921
	archaeological survey of Shimek Trail project	Lee	\$1,417
	archaeological survey of Lake Rathbun project	Appanoose	\$1,476
	archaeological survey of Madrid project	Boone	\$1,574
	archaeological survey of a Woodland Ridge Subdivision development project	Johnson	\$1,610
	archaeological survey of Motor Mill Access project	Clayton	\$1,706
	archaeological survey of Kellteron Pond project	Ringgold	\$1,827
	archaeological survey of Rathbun Ramp project	Appanoose	\$1,962
	archaeological survey of Ottumwa project	Wapello	\$1,990
	archaeological survey of Pine Lake project	Hardin	\$2,524
	archaeological survey at West Lake Park project	Scott	\$2,762
	archaeological reconnaissance of West Lake Park restoration project	Scott	\$3,135
	archaeological survey of White Horse project	Sac	\$3,166
	archaeological survey of Blue Wing Marsh project	Palo Alto	\$3,225
	archaeological survey of Millville Access project	Clayton	\$3,571
	archaeological survey of Black Hawk Marsh project	Sac	\$3,601
	archaeological survey of Estherville improvements project	Emmet	\$3,723
	Public engagement water trail brochure design	Johnson	\$3,795
	Public engagement water trail brochure design	Webster	\$3,795
	Public engagement water trail brochure design	Webster	\$3,795
	Public engagement water trail brochure design	Multi-County	\$3,796
	archaeological survey of De Soto project	Dallas	\$3,966
	Public engagement panel design, manufacture, and booklet printing	Delaware	\$4,233
	archaeological survey of additional Lekwa Marsh project	Cerro Gordo	\$4,299
	archaeological survey of Kiowa project	Sac	\$4,402
	archaeological survey of Terrace Hill front yard project	Polk	\$5,985
	archaeological survey of Lake Mills project	Winnebago	\$6,460
	additional archaeological survey of Black Hawk Marsh project	Sac	\$6,569
	archaeological survey of Hickory Grove Lake project	Story	\$7,739
archaeological survey of Grimes water project	Dallas	\$8,633	

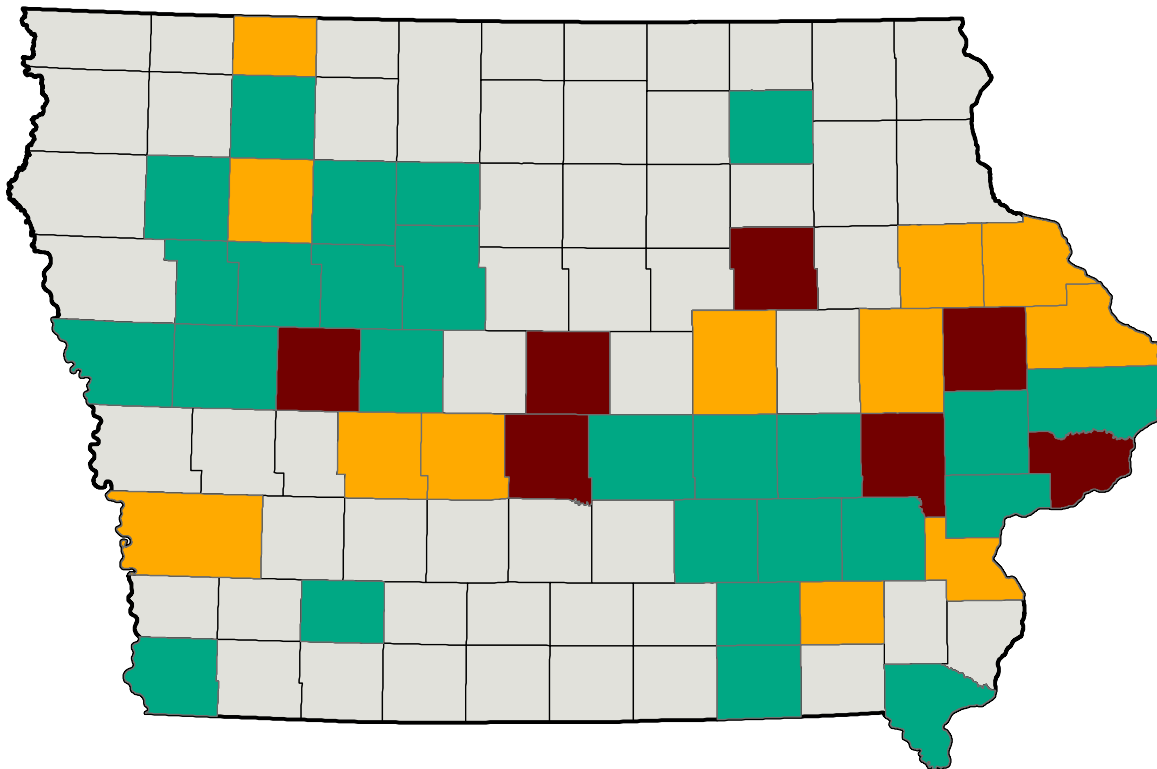
Funding Received for Sponsored Research and Services, Fiscal Year 2019

SPONSOR	PROJECT	COUNTY	AWARD
Iowa DNR Water Quality Bureau	archaeological survey of Wilton wastewater project	Muscatine	\$500
	archaeological survey of Gilbert project	Story	\$2,344
	archaeological survey of Clarion project	Wright	\$2,776
	archaeological survey of Monroe project	Jasper	\$3,480
	archaeological survey of Dallas Center project	Dallas	\$3,662
	archaeological survey of Clinton project	Clinton	\$4,190
	archaeological survey of Waukon project	Allamakee	\$4,426
	archaeological survey of Ames Munn Woods project	Story	\$4,492
	archaeological survey of Bellevue project	Jackson	\$5,065
Iowa DOT	archaeological survey of Charles City project	Floyd	\$6,132
	historic architectural survey of T14 Speedway Drive	Jasper	\$5,862
	historic architectural survey of T14 Speedway Drive	Jasper	\$23,126
	archaeological survey of Polk County roads project	Polk	\$26,455
	historic architectural mitigation of US Highway 30 Bridge in Linn County	Linn	\$29,727
Iowa Lakes Electric Cooperative	archaeological survey of a local roads project	Woodbury	\$29,895
	archaeological survey of Five Island Feeder Tie project	Palo Alto	\$2,175
Jacob Leichty	archaeological survey of Wayland project	Henry	\$1,358
Johnson County Soil & Water Conservation District	archaeological survey of Wood project	Johnson	\$1,642
	archaeological survey of Tandy project	Johnson	\$1,656
	archaeological survey of Downes project	Johnson	\$1,872
	archaeological survey of Conkling project	Johnson	\$2,529
	archaeological survey of CC-015-Sippy project	Johnson	\$2,620
	archaeological survey of Lacina project	Johnson	\$2,692
	archaeological survey of CC-016-Sippy project	Johnson	\$3,344
Julie Durr	archaeological survey of Conkling project	Johnson	\$3,441
	archaeological survey of Timber Pointe Estates development project	Johnson	\$2,636
Kirkham Michael	archaeological survey of Manchester Airport project	Delaware	\$4,167
Kory Kallberg	archaeological survey of agriculture building project	Muscatine	\$1,225
Madison County Historic Preservation Commission	Ground Penetrating Radar survey at Farris Cemetery	Madison	\$3,162
Merjent	historic architectural survey of Northern Ventura E pipeline project	Out of State	\$1,895
	archaeological survey of Manchester Heater pipeline project	Delaware	\$2,726
	archaeological survey of Oskaloosa pipeline workspace project	Mahaska	\$2,726
	archaeological survey of Plainfield pipeline project	Bremer	\$3,825
	archaeological survey of pipeline modifications project	Dubuque	\$7,092
	archaeological survey of Merrill project	Plymouth	\$9,716
	archaeological survey of Saylorville Lake project	Boone	\$13,847
Michael Roelf	archaeological survey of a	Johnson	\$1,422
MMS Consultants Inc.	archaeological survey of Greazel Pointe project	Johnson	\$1,422
	archaeological survey of Redwing Estates development project	Johnson	\$1,540
	archaeological survey of 1651 Opie Avenue parcel	Johnson	\$1,547
	historic architectural survey of 1651 Opie Avenue parcel	Johnson	\$1,828
	archaeological survey and architectural history review of Oxford Farmstead Split project	Johnson	\$2,575
	archaeological survey of Celebration Farm project	Johnson	\$3,628
	archaeological survey of Polk and Highway 382 development project	Johnson	\$4,007

Funding Received for Sponsored Research and Services, Fiscal Year 2019

SPONSOR	PROJECT	COUNTY	AWARD
Osceola County Rural Water System, Inc.	archaeological monitoring for two sites (13OB88 and 13OB91)	O'Brien	\$1,997
Patrick Mougín	archaeological survey of a	Johnson	\$1,499
Plymouth County Engineer's Office	archaeological survey of a bridge replacement project	Plymouth	\$4,422
	archaeological survey of a bridge replacement project	Plymouth	\$5,812
Polk County Conservation	archaeological survey of Kay's Triangle project	Polk	\$6,446
Raquel Wrlly	archaeological survey of Wray Farmstead project	Johnson	\$1,538
Rex Harris	archaeological survey of Sedan Bottoms project	Appanoose	\$1,896
State Historical Society	preservation of John Palmquist archaeological collection		\$12,259
Terracon	cultural resources evaluation	Warren	\$857
	archaeological survey and architectural history review of 2302 Linden Road tower project	Shelby	\$2,045
	historic architectural survey of Eagle Crossings Business Park tower project	Mills	\$40,476
University of Iowa	historic research of the University of Iowa Museum of Art	Johnson	\$4,277
Upper Explorerland Regional Planning Commission	historic architectural survey of Garnavillo sewer project	Clayton	\$7,653
Total			\$684,677

Public Presentations in Iowa, FY 2019



By County



OSA & Mobile Museum Events



Mobile Museum Events



OSA Event/ Presentation

Vision

The Office of the State Archaeologist aspires to be a nationally recognized archaeological research center emphasizing interdisciplinary excellence.

Core Values

In addition to supporting the “*University of Iowa Strategic Plan for 2016-2021*,” OSA is guided by the Society for American Archaeology’s Principles of Archeological Ethics. These principles are embodied in nine commitments: *stewardship, accountability, commercialization, public education and outreach, intellectual property, public reporting and publication, records and preservation, training and resources, and safe educational and workplace environments*. As a nationally recognized research facility, OSA is dedicated to engaging multiple constituencies while promoting a dynamic intellectual environment. We focus on advanced research, transformative student learning experiences, and public engagement to inspire and improve the quality of life for all Iowans through education and support of sustainable infrastructure development. We actively contribute to the University’s mission and goals which recognize intellectual and cultural vitality is the foundation of a healthy research organization.

Mission

Develop, disseminate, and preserve knowledge of Iowa’s human past through archaeological research, scientific discovery, public stewardship, service, and education.

GOAL 1:

Conduct high-impact research throughout Iowa and the surrounding region.

- Engage in Iowa-focused archaeological, architectural history, and bioarchaeological research that contributes to understanding Iowa’s past and present.
 - » Focus research effort on topics reflecting core staff strengths.
 - » Investigate and invest in emerging research areas to which staff may successfully contribute.
 - » Broaden the range of contract and grant-supported research opportunities.
 - » Display OSA’s excellence through peer-reviewed publications, large research projects, national and regional conference participation, and exceptional customer service.
 - » Continue OSA’s national leadership role in the respectful treatment of ancient human remains.
- Recruit and retain staff who possess the knowledge, skills, abilities, and diversity to enhance OSA’s research activities while maintaining a high quality workplace environment.
 - » Further develop a “people first” focus to increase staff awareness they are valued.
 - » Improve project management and business practices to maximize support for research staff to conduct high quality and investigations.
 - » Develop additional means to recognize and credit staff for their achievements.
 - » Maintain and enhance gender and ethnic diversity staffing opportunities.
 - » Provide an environment where innovation, flexibility, and collaboration are encouraged and rewarded.

- Contribute to a campus culture in which UI faculty, staff, and students can expand their research productivity.
 - » Creatively explore collaborative research partnerships with campus faculty and staff partners that complement and extend OSA’s areas of strength.
 - » Develop opportunities for meaningful student participation in OSA research.
 - » Direct resources to existing and emerging programs based on their centrality to UI’s mission and potential for sustained funding and excellence.
 - » Encourage new and highlight existing research that illustrates the diverse peoples in Iowa’s archaeological record.



GOAL 2:

Contribute in meaningful ways to educating UI students to be engaged citizens.

- Increase the visibility and awareness of educational opportunities offered by OSA among the University undergraduate student population.
 - » Enhance affordability and promote effective year-round learning opportunities by offering student ICRU-funded and other internships, work-study positions, and summer work opportunities.
 - » Provide undergraduates with high-quality learning experiences through independent study opportunities leading to honors theses.
 - » Offer specialized courses in archaeology and bioarchaeology through the Anthropology Department not provided by the regular faculty.
 - » Provide field schools and hands-on laboratory research projects that incorporate interdisciplinary studies, international collaborations, and development of specialized technical skills.
- Conduct long-term archaeological projects with funded research opportunities for graduate and post-graduate scholars.
 - » Participate in cross-disciplinary graduate degree programs with other University departments and programs.
 - » Recruit graduate students from University departments and programs to work on OSA projects and provide high quality mentoring experiences to develop expertise and leadership abilities.
 - » Provide research opportunities for graduate students through access to OSA's extensive document and material collections, specialized staff knowledge, and mentoring by professionals.

- Create learning experiences about the human past that enriches the lives of all students and helps them to become well-informed individuals, engaged citizens, and productive employees and employers.
 - » Contribute to a more inclusive campus by educating faculty, staff, and students about diversity in the past.
 - » Improve student critical thinking skills using archaeological data about past human adaptations.
 - » Expand student appreciation for understanding culture change and appreciating the range of human cultural diversity.
 - » Develop student awareness that valuing the human past improves quality of life for all in the present.

GOAL 3:

Engage statewide with Iowans to support life-long learning about the past to improve the present quality of life and enhance responsible infrastructure development.

- Strengthen and expand OSA partnerships with public constituencies to advance understanding and appreciation about the human past and stewardship of archaeological resources.
 - » Expand partnerships with K–12 educators to promote diversity learning in Iowa history.
 - » Enhance lifelong learning opportunities and professional development on campus and via distance learning through partnerships between OSA, other University departments, and communities and individuals across the state.
 - » Sponsor public field schools in conjunction with OSA research or projects conducted by other partners.
 - » Fulfill statutory obligations on behalf of the public interest in protecting ancient human remains and burial

locations in partnerships with American Indian Nations and other descendant communities, maintaining and expanding the State Archaeological Repository, and providing improved digital access to the Iowa Site File.

- Showcase the societal benefits of archaeological research and teaching for the citizens of Iowa.
 - » Promote OSA's public engagement programming and educational opportunities through social media, radio, internet, and print media.
 - » Engage external partners to enhance archaeological stewardship through conservation easements and foster economic development through heritage tourism.
 - » Encourage the Regents' institutions and statewide colleges to use OSA resources in faculty and student research.
 - » Support the Iowa Archeological Society in its efforts to encourage recording and preserving archaeological sites and artifacts and its other goals.
- Support economic development by helping clients navigate complex federal, state, and local historic preservation legislation as part of statewide infrastructure development projects.
 - » Expand use of digital technologies (e.g., high resolution mapping, drones, applications for mobile devices) to increase speed and quality of field data capture.
 - » Lead the nation through responsible tribal consultation with American Indian nations.
 - » Translate OSA's intellectual work into publicly meaningful contributions to public understanding of and appreciation for the past as part of sustainable and responsible infrastructure development.

Appendix B: Public Presentations and Media Events, Fiscal Year 2019

County	Location	Staff Member	Sponsor	Date	Topic/Title	Audience
Adams	Corning	Mobile Museum Staff	OVPR	October 5	UI Mobile Museum at Corning Elementary School	228
Black Hawk	Raymond	Mobile Museum Staff	OVPR	October 7	UI Mobile Museum at Sunday at the Quarry	299
Black Hawk	Cedar Falls	John Doershuk	University of Northern Iowa Anthropology Club	March 12	Recent Lakeside Lab Archaeological Field School Investigations: The Prairie Lakes Woodland Era	19
Buena Vista	Storm Lake	Mark L. Anderson	St. Mary's Catholic School	March 22	Archaeology in Western Iowa	45
Calhoun	Rockwell City	Mobile Museum Staff	OVPR	August 4	UI Mobile Museum at the Sweet Corn Festival	292
Carroll	Carroll	Mobile Museum Staff	OVPR	October 8	UI Mobile Museum at the Carroll Rec Center	15
Cedar	Clarence	Mobile Museum Staff	OVPR	August 6	UI Mobile Museum at the Clarence Farmers Market	76
Cherokee	Cherokee	Mobile Museum Staff	OVPR	September 13	UI Mobile Museum the Cherokee Public Library	90
Chickasaw	New Hampton	Mobile Museum Staff	OVPR	September 20	UI Mobile Museum at New Hampton Elementary	191
Clay	Spencer	Mobile Museum Staff	OVPR	September 8 – 14	UI Mobile Museum at the Clay County Fair	2523
Clinton	Clinton	Mobile Museum Staff	OVPR	July 4	UI Mobile Museum at the Clinton 4th of July Festival	251
Dallas	Earlham	Lara Noldner	Dallas County Conservation Board	June 15	Healing of the Mounds	30
Davis	Bloomfield	Mobile Museum Staff	OVPR	August 7	UI Mobile Museum at the Davis County Back to School Resource Fair	69
Delaware, Jones, Jackson	Manchester, Hopkinton, Monticello	Elizabeth Reetz, Cherie Haury-Artz	N-Compass, Inc.	July 8 – 13	Resident Archaeologists at the 16th Annual Project AWARE: Maquoketa River	397
Delaware	Hopkinton	Elizabeth Reetz, Cherie Haury-Artz	N-Compass, Inc.	July 10	Make-and-Take Rock Art	15
Dickinson	Milford	Cherie Haury-Artz	Iowa Lakeside Laboratory	July 18	Ice Age Iowa	17
Dickinson	Milford	Cherie Haury-Artz	Okoboji Yacht Club	July 19	A Walk Back Through Time	11
Dickinson	Milford	Cherie Haury-Artz	Iowa Lakeside Laboratory	May 8	Ancient Technology in Iowa: How Did They Do That?	85
Dickinson	Wahpeton	John Doershuk	Iowa Lakeside Laboratory	June 23	Lakeside Lab Summer Fundraiser Keynote Presentation	175
Dickinson	Spirit Lake	John Doershuk	Dickinson County Museum	June 29	Recent Lakeside Lab Archaeological Field School Investigations: The Prairie Lakes Woodland Era	90
Dubuque	Dubuque	Jennifer E. Mack	Loras College	January 11	The Tender Mercies of Our Successors: Excavating Dubuque's Third Street Cemetery	26
Fremont	Shenandoah	Mobile Museum Staff	OVPR	September 5	UI Mobile Museum at Shenandoah Community Schools	62
Guthrie	Coon Rapids	Joe Artz, Cherie Haury-Artz, Branden Scott	Whiterock Conservancy and Impact 7G	September 15	Volunteer Excavation at Whiterock Conservancy	14
Guthrie	Coon Rapids	Cherie Haury-Artz, Joe Artz	Whiterock Conservancy	March 9	Archaeology Road Show	20
Humboldt	Gilmore	Mobile Museum Staff	OVPR	October 15	UI Mobile Museum at Gilmore-Bradgate Elementary School	118
Ida	Ida Grove	Mobile Museum Staff	OVPR	October 22	UI Mobile Museum at Ida Grove Public Library	26
Iowa	Ladora	Mobile Museum Staff	OVPR	August 25	UI Mobile Museum at Ladora Sesquicentennial	184
Jasper	Newton	Mobile Museum Staff	OVPR	July 8 – 9	UI Mobile Museum at the Iowa Speedway	654

Appendix B: Public Presentations and Media Events, Fiscal Year 2019

County	Location	Staff Member	Sponsor	Date	Topic/Title	Audience
Jefferson	Fairfield	Mark L. Anderson	Jefferson County Conservation Board	February 23	Archaeology Along the Lower Des Moines River and Flint Knapping Demonstration	60
Johnson	Coralville	Mobile Museum Staff	OVPR	July 3	UI Mobile Museum at Coralville Lake and Sugarbottom Campground	68
Johnson	North Liberty	Mobile Museum Staff	OVPR	July 31	UI Mobile Museum at North Liberty Lunch and Learn	157
Johnson	Iowa City	Mobile Museum Staff	OVPR	August 8	UI Mobile Museum OVPR Fall Picnic	57
Johnson	Iowa City	Elizabeth Reetz	Kirkwood Community College	October 3	A History of Iowa Hall's Native American Exhibits	15
Johnson	Iowa City	Lara Noldner	University of Iowa Department of Anthropology	October 6	NAGPRA: Application of the Process	15
Johnson	Tiffin	Cherie Haury-Artz	Clear Greek Amana High School	November 15 – 16	Pleistocene Megafauna and Iowa's Earliest Residents	180
Johnson	Iowa City	Colleen Randolph	Grant Wood Elementary School	November 28	What is an Archaeologist?	40
Johnson	Iowa City	Colleen Randolph	Grant Wood Elementary School	December 6	Hands-on Exploration of Ancient Technology	35
Johnson	OSA	Jennifer E. Mack	OSA	December 7	OSA Brown Bag: What Hope Lies Buried Here: Differential Mortality and Mortuary Treatment of Adolescents in Dubuque's Third Street Cemetery	30
Johnson	OSA	Bryan Kendall	OSA	January 18	OSA Brown Bag: Where is the Weir? Relocating the Lost Amana Fish Weir	41
Johnson	OSA	John Doershuk, Rebekah Gansemer, Elizabeth Reetz	OSA	February 5	OSA Tour and Introduction to OSA Archives for Advanced Creative Writing Students	15
Johnson	OSA	Lara Noldner	OSA	February 15	OSA Brown Bag: The Physical and the Digital: A Test of the Reliability of Craniometric Data Collection from 3D Models	27
Johnson	OSA	Warren Davis	OSA	February 22	OSA Brown Bag: Preservation of the John Palmquist Collection from Southwestern Iowa	39
Johnson	North Liberty	Cherie Haury-Artz	Garner Elementary Extended Learning Program	February 28	Exploring an Archaeological Site	21
Johnson	OSA	Joseph Tiffany	OSA	March 8	OSA Brown Bag: Exploring the Collections from the Phipps National Historic Landmark Site (12CK21)	25
Johnson	Solon	Colleen Randolph	OSA	March 11	Assistant at School of the Wild	25
Johnson	Iowa City	Elizabeth Reetz	Kirkwood Community College	March 13	A History of Iowa Hall's Native American Exhibits	15
Johnson	Iowa City	Angela R. Collins	UI Department of Anthropology	March 26	REX-East Archaeology and Site 23PI294	15
Johnson	OSA	Cherie Haury-Artz, Seraphina Carey	OSA	May 21	OSA Tour and Showcase of Artifact from Vinton	2
Johnson	Iowa City	Elizabeth Reetz, Seraphina Carey, Cherie Haury-Artz	Belin-Blank Center Junior Scholars Institute	June 17 – 21	Archaeology: Discover the Past!	10
Jones	Monticello	Cherie Haury-Artz	N-Compass, Inc.	July 11	Archaeology of Maquoketa Caves State Park and Rock Art in Iowa	25
Jones	Monticello	Mobile Museum Staff	OVPR	July 11	UI Mobile Museum at Project AWARE	98

Appendix B: Public Presentations and Media Events, Fiscal Year 2019

County	Location	Staff Member	Sponsor	Date	Topic/Title	Audience
Jones	Anamosa	Mobile Museum Staff	OVRP	October 6	UI Mobile Museum at Pumpkinfest	774
Jones	Anamosa	Warren Davis, John Doershuk	Iowa Archeological Society Fall Meeting	October 13	Preservation of the John Palmquist Collection from Southwestern Iowa	50
Jones	Anamosa	John Doershuk, Mark L. Anderson	Iowa Archeological Society Fall Meeting	October 13	Rummels-Maske Site	50
Jones	Anamosa	Jennifer E. Mack	Iowa Archeological Society Fall Meeting	October 13	Tomfoolery and Tuberculosis: An Examination of Adolescent Health and Mortality at Dubuque's Third Street Cemetery	50
Lee	Donnellson	Mobile Museum Staff	OVRP	July 13	UI Mobile Museum at Lee County Fair Kid's Day	141
Linn	Toddville	Elizabeth Reetz, Cherie Haury-Artz	Wickiup Hill Outdoor Learning Center; Linn County Conservation Board	October 6	Exhibit Booth at Meskwaki Cultural Day: Exploring Traditions	150
Linn	Toddville	Mark L. Anderson	Wickiup Hill Outdoor Learning Center; Linn County Conservation Board	October 27	Great Pumpkin Atlatl Hunt	75
Linn	Cedar Rapids	Cherie Haury-Artz	Prairie Crest Elementary School	November 13	Cycles of the Seasons: Meskwaki Then and Now	80
Linn	Cedar Rapids	Jennifer E. Mack	Linn County Genealogical Society	February 23	The Tender Mercies of Our Successors: Excavating Dubuque's Third Street Cemetery	32
Linn	Cedar Rapids	Cherie Haury-Artz	Grant Wood Area Educational Association	June 17 – 28	College for Kids: The Archaeology of Iowa	36
Louisa	Grandview	Cherie Haury-Artz	Louisa County Conservation Board	September 22	A Walk Back Through Time (Women's Outdoor Workshop)	12
Mahaska	Oskaloosa	Mobile Museum Staff	OVRP	September 27	UI Mobile Museum at the Oskaloosa Public Library	45
Monona, Crawford, Greene, Story, Jasper, Keokuk, Johnson, Scott	Onawa, Denison, Jefferson, Ames, Newton, Sigourney, Iowa City, Davenport	Mobile Museum Staff	OVRP	July 21 – 28	UI Mobile Museum at RAGBRAI	3256
Muscatine	Muscatine	Mobile Museum Staff	OVRP	October 27	UI Mobile Museum at the Muscatine Area Farmers Market	307
Pocahontas	Pocahontas	Mobile Museum Staff	OVRP	October 10	UI Mobile Museum at the Pocahontas Public Library	191
Polk	Des Moines	John Doershuk, Suzanne Doershuk	Living History Farm	July 14	Exhibit Booth at Ioway Culture Day	123
Polk	Des Moines	Mobile Museum Staff	OVRP	August 9 – 19	UI Mobile Museum at the Iowa State Fair	6429
Polk	Ankeny	John Doershuk	Des Moines Area Community College	February 29	Recent Archaeological Research at Lakeside Lab	27
Pottawattamie	Honey Creek	Cherie Haury-Artz	Golden Hills RC&D and Pottawattamie County Conservation Board	February 1	Archaeological Explorations in SW Iowa	20
Pottawattamie	Hancock	Cherie Haury-Artz	Golden Hills RC&D and Pottawattamie County Conservation Board	February 2	Archaeological Explorations in SW Iowa	10
Poweshiek	Montezuma	Mobile Museum Staff	OVRP	August 24	UI Mobile Museum at the City of Montezuma 150th Celebration	209

Appendix B: Public Presentations and Media Events, Fiscal Year 2019

County	Location	Staff Member	Sponsor	Date	Topic/Title	Audience
Scott	Eldridge	Jennifer E. Mack	North Scott High School	March 19	Bone Where There's Not Supposed To Be Any: Dubuque's Third Street Cemetery	50
Story	Ames	John Doershuk	Iowa State University Division of World Cultures and Language	February 28	Recent Lakeside Lab Archaeological Field School Investigations: The Prairie Lakes Woodland Era	13
Story	Ames	Cherie Haury-Artz	Iowa Archeological Society Spring Meeting	May 4	Dixon Site: Food, Feathers, and Animal Symbolism	70
Story	Ames	Jennifer E. Mack	Iowa Archeological Society Spring Meeting	May 4	"Of Little Archaeological Value": The Remains of the "Unknown 15" Lost and Found	70
Story	Ames	Bill Whittaker	Iowa Archeological Society Spring Meeting	May 4	Update on Iowa's Historic Indian Location Database	70
Story	Ames	Bill Whittaker	Iowa Archeological Society Spring Meeting	May 4	Keyes-Orr Award to Russell Baldner	70
Tama	Tama	Elizabeth Reetz, Cherie Haury-Artz, Vero Rose Smith	Meskwaki Tribal Museum, Iowa Archeological Society	August 10 – 11	Exhibit Booth at Meskwaki 104th Annual Meskwaki Powwow	800
Tama	Toledo	Cherie Haury-Artz	Tama County Conservation Board	March 13	Ancient Technology in Iowa: How Did They Do That?	16
Out of State	Sioux Falls, SD	Joseph A. Tiffany	Augustana College	January 20	Exploring the Collections from the Phipps (13CK21), National Historic Landmark	xx
Out of State	Rock Island, IL	Warren Davis	Quad Cities Archaeological Society	February 26	Old Collections, New Insights: Analysis of the Lungren Site (13ML224)	25
Out of State	Rock Island, IL	Mark L. Anderson	Quad Cities Archaeological Society	October 30	Preliminary Results from the Dixon Site, 12WD8, an Oneota Village on the Little Sioux River	30
Out of State	Chicago, IL	Elizabeth Reetz	Archaeology Education Clearinghouse, National Council for Social Studies	November 29 – 30	Exhibit Booth on Archaeology Education Materials	200
Out of State	Edwardsville, IL	Lara Noldner	Southern Illinois University, Edwardsville	May 1	NAGPRA in Iowa	18

NAGPRA = Native American Graves Protection and Repatriation Act, RC&D = Resource Conservation and Development OVPR = University of Iowa Office of the Vice President for Research

Appendix C: Presentations at Professional Meetings, Fiscal Year 2019

Staff Member	Conference or Meeting	Location	Date	Presentation Title
Alex, Lynn, William Green, Robin Lillie, and Shannon Fie	62nd Annual Midwest Archaeological Conference	Notre Dame, IN	October 5	Rediscovering Toolesboro, a Middle Woodland Mound Group in Southeastern Iowa
Anderson, Mark L.	131th Iowa Academy of Science Annual Meeting	Cedar Falls	April 27	Preliminary Results from the Dixon site, 13WD8, and Oneota Village on the Little Sioux River
Carey, Seraphina	131th Iowa Academy of Science Annual Meeting	Cedar Falls	April 27	From Bird to Bone: Adding to An Archaeologist's Comparative Collection
Carlson, Richard	State National Register Nomination Review Committee	Des Moines	October 12	The Iowa Federation Home and Tate Arms, Iowa City, Iowa
Carlson, Richard	State National Register Nomination Review Committee	Des Moines	June 14	Three Residential Properties in Cherokee, Iowa, and One Historic District in Iowa City, Iowa
Collins, Angela R., Mary De La Garza, John F. Doershuk, and Elizabeth Reetz	62nd Annual Midwest Archaeological Conference	Notre Dame, IN	October 5	Thermal Eye in the Sky: Updates on Iowa's Digital Archaeology Initiatives
Davis, Warren, Keely Kinsella, Maizy Fugate, and Jaqueline O'Neill	131th Iowa Academy of Science Annual Meeting	Cedar Falls	April 27	Preservation of the John and Phil Palmquist Collection from Southwestern Iowa
Doershuk, John F., John Cordell, Teresa Rucker, and Steve Lensink	84th Annual Meeting of the Society for American Archaeology invited Symposium presentation	Albuquerque, NM	April 11	Using the State Archaeological Repository of Iowa: Collections Long Held Re-examined and Application of New Technologies
Doershuk, John F.	84th Annual Meeting of the Society for American Archaeology invited Symposium presentation	Albuquerque, NM	April 13	Establishing Best Practices Guidelines for Archaeologist and Artifact-Collector Collaborators
Mack, Jennifer E.	20th Annual Conference of the British Association for Biological Anthropology and Osteoarchaeology	Cranfield, Bedford, United Kingdom	September 15	Tomfoolery and Tuberculosis: An Examination of Adolescent Health and Mortality at Dubuque's Third Street Cemetery
Noldner, Lara, Johnathan Buffalo, John F. Doershuk, Dan Higginbottom, Cindy Peterson, Elizabeth Reetz, Christy Rickers, Megan Stroh Messerole, and Suzanne Wannate Buffalo	National Alliance of Preservation Commissions 11th Biennial Forum and 2018 Preserve Iowa Summit	Des Moines	July 21	Archaeological and Tribal Historic Preservation Efforts in Iowa
Noldner, Lara	59th Iowa Association of County Conservation Boards Fall Conference	Des Moines	September 20	Protection of Ancient Human Remains in Iowa: Purposes, Laws and Processes
Noldner, Lara, David Grandwohl, Cindy Peterson, and Dan Higginbottom	62nd Annual Midwest Archaeological Conference	Notre Dame, IN	October 6	"We Release You Once More to the Ground": Reburial of Four Euro-American Pioneer Skeletons from the Henry Woods Site, Polk County, Iowa
Noldner, Lara	88th Annual Meeting of the American Association of Physical Anthropologists	Cleveland, OH	March 28	The Physical and the Digital: a Test of the Reliability of Craniometric Data Collection from 3D Models
Noldner, Lara	84th Annual Meeting of the Society for American Archaeology invited Symposium presentation	Albuquerque, NM	April 11	Cultural Resource Protection in Iowa Using Hand-Held LiDAR Technology
Randolph, Colleen	2019 Preserve Iowa Summit	Newton	May 6	Accessing Iowa's Cultural Data Using I-Sites
Reetz, Elizabeth	National Council for the Social Studies Annual Conference	Chicago, IL	November 29	The Archaeology of Food
Reetz, Elizabeth	84th Annual Meeting of the Society for American Archaeology invited Symposium presentation	Albuquerque, NM	April 12	The Most Overlooked Component of Public Archaeology: Approaches to Educational Assessment
Reetz, Elizabeth	84th Annual Meeting of the Society for American Archaeology invited Symposium presentation	Albuquerque, NM	April 13	Social Media as Public Archaeology: Understanding Strategies, Skills, and Best Practices for Effective Engagement
Tiffany, Joseph A., William Green, James B. Stoltman, George R. Holley, and Cynthia Strong	Mississippian Conference, Cahokia Mounds State Historic Site	Collinsville, IL	July 28	Reanalysis of a Fine-engraved Vessel from Northwest Iowa: Implications Regarding Caddo and Mississippian Contacts

Appendix D: Publications, Fiscal Year 2019

Staff Member	Journal or Book	Article or Chapter Title	Publication Date
Alex, Lynn M., William Green, and Robin M. Lillie	<i>Journal of the Iowa Archeological Society</i> 66:1–79	Toolesboro: A Havana-Hopewell Mound Group in Southeastern Iowa	2019
Cordell, John L., John F. Doershuk, and Stephen C. Lensink	Contributed book chapter (pp. 151–162) to: <i>Using and Curating Archaeological Collections</i> , edited by S. Terry Childs and Mark S. Warner. Washington, D.C.: SAA Press	Dodging the Repository Money Pit: The Iowa Experience	2019
Cordell, John L., John F. Doershuk, and Stephen C. Lensink	<i>Journal of the Iowa Archeological Society</i> 65:44–52	History of Iowa's State Archaeological Repository	2018
Doershuk, John F.	<i>Journal of the Iowa Archeological Society</i> 65:61–63	Book Review: "Indian Mounds of Wisconsin (second edition)" by Robert A. Birmingham and Amy L. Rosebrough. University of Wisconsin Press, Madison	2018
Doershuk, John F.	<i>Midcontinental Journal of Archaeology online book reviews</i> : https://www.midwestarchaeology.org/mcja/book-reviews	Book Review: "Revealing Greater Cahokia, North America's First Native City: Rediscovery and Large-Scale Excavations of the East St. Louis Precinct" by Thomas E. Emerson, Brad H. Koldehoff, and Tamira K. Brennan. University of Illinois at Urbana-Champaign Studies in Archaeology Number 12	2019
Doershuk, John F.	<i>Newsletter of the Iowa Archeological Society</i> 68(1&2)2–4	Archaeological Excavation at Mini-Wakan State Park	2018
Green, William	<i>Journal of the Iowa Archeological Society</i> 65:56	Addendum to "Doug Jones Role in Documenting Ancient Plant Use in Iowa"	2018
Green, William, Ronald C. Schirmer, and William T. Billeck	<i>Plains Anthropologist</i> 64; https://doi.org/10.1080/00320447.2019.1585409	Plant Remains and Associated Insects from the Millipede Site (13ML361), a Burned Earthlodge in Southwest Iowa	2019
Mack, Jennifer E. (Primary author Iñigo Olalde, with 108 additional authors)	<i>Science</i> 363:1230–1234	The Genomic History of the Iberian Peninsula Over the Past 8000 Years	2019
Reetz, Elizabeth C.	<i>Journal of Community Archaeology & Heritage</i> 6(3):229–231	Event Review: 'Archaeology Education : Building a Research Base'	2019
Reetz, Elizabeth C., Cherie Haury-Artz, and Jay A. Gorsh	Contributed book chapter (pp. 74–108) to: <i>Public Engagement and Education: Developing and Fostering Stewardship for an Archaeological Future</i> , edited by Katherine M. Erdman. New York: Berghahn Books.	Strengthening a Place-based Curriculum through the Integration of Archaeology and Environmental Education (with Appendix: Questionnaire Designed to Assess Student Understanding of the People and the Land Unit at School of the Wild)	2019
Tiffany, Joseph A.	<i>Southeastern Archaeology</i> 37(3)253–254	Book Review: "Dam Projects and the Growth of American Archaeology" edited by Kimball Banks and John Czaplicki	2018
Tiffany, Joseph A.	<i>Journal of the Iowa Archeological Society</i> 65:1–22	Artifacts from the South Marble Rock Mound Group, Floyd County, Iowa	2018
Tiffany, Joseph A.	<i>Northwest Iowa Archeological Society Newsletter</i> 67(4)1, 3	New Discoveries from the Phipps Site Collections	2019
Whittaker, William E.	<i>Journal of the Iowa Archeological Society</i> 65:64–65	Review of "The Thunder Before the Storm: The Autobiography of Clyde Bellecourt" by Clyde Bellecourt	2018
Whittaker, William E.	<i>Journal of the Iowa Archeological Society</i> 66:82–83	Book Review: "The Indian World of George Washington: the First President, the First Americans, and the Birth of a Nation" by Colin G. Calloway	2019
Whittaker, William E.	<i>Newsletter of the Iowa Archeological Society</i> 68(1&2)8–11	Scenes of Iowa, 1847–1850 (Part 1)	2018
Whittaker, William E.	<i>Newsletter of the Iowa Archeological Society</i> 68(3)4–5	Collectors' Heyday: 1920s–1960s	2018
Whittaker, William E.	<i>Newsletter of the Iowa Archeological Society</i> 68(4)1–2	Scenes of Iowa, 1847–1850	2018
Whittaker, William E.	<i>Newsletter of the Iowa Archeological Society</i> 69(1)2–5	How Iowa Mounds Were Depicted in the 19th Century	2019

Appendix E: Appointments, Awards, and Service on Boards, Commissions, or Committees, Fiscal Year 2019

Staff Member	Appointment, Award, Board, Commission, or Committee Name	Meeting Location	Duration/Date	Description
Anderson, Mark L.	Iowa Academy of Science, Anthropology Section Chair	varies	annual	organize annual meeting presentations and posters for the Anthropology Section as well as provide information and support to the academy as requested.
Anderson, Mark L.	Big Sand Mound Preserve Board, Archaeology and Geology Representative	Muscatine	biannual	demonstrate the commitment to environmental education, ecological restoration and has the potential to serve as a model for other land stewards
Anderson, Mark L.	Archaeological Institute of America, Iowa Society President	Iowa City	annual	organize annual lecture series, coordinate nationally sponsored guest lecture visits, coordinate International Archaeology Day activities, and serve to foster and enhance the local society members interests in archaeology
Collins, Angela R.	Assistant Editor, <i>Journal of the Iowa Archeological Society</i>	n/a	annually	assisted with layout for the vol. 65 and 66 of the <i>Journal of the Iowa Archeological Society</i>
Cordell, John L.	University of Iowa Collections Coalition	various University of Iowa campus locations	monthly	support UI educational, research, and service goals by encouraging and advancing the professional care, documentation, and study of artifacts, specimens, and documents in the collections located in the University community, to make the collections meaningful and accessible to members of the University and general public, and to encourage the professional growth and development of the administrators, curators, and keepers of the collections
Doershuk, John F.	Iowa Archeological Society Board (ex officio member)	varies	two times annually	unite those interested in the archaeology of Iowa; foster cooperation among professional and amateur archaeologists; promote the study, investigation, and interpretation of prehistoric and historic remains in Iowa; provide for the dissemination of knowledge and research in archaeology and related disciplines; encourage the recording and preservation of sites and artifacts; and develop a constructive attitude toward these cultural resources through education and public involvement
Doershuk, John F.	Adjunct Associate Professor	Iowa City	academic year 2018–2019	serve as adjunct faculty for University of Iowa Department of Anthropology
Doershuk, John F.	Visiting Lecturer	Mt. Vernon	academic year 2018–2019	serve as lecturer for Cornell College Department of Sociology and Anthropology
Doershuk, John F.	Iowa Science Foundation, Grant reviewer	electronically	As needed	review grants for the Iowa Science Foundation
Doershuk, John F.	Effigy Mounds National Monument Review Board	varies	at least twice annually	participate in providing oversight to multiple on-going investigations concerning cultural resources compliance issues
Doershuk, John F.	Committee member	monthly	June 2018-May 2019	UI Path Forward 2.0 Task Force on University Engagement
Doershuk, John F.	<i>Midcontinental Journal of Archaeology</i> , Editorial Board	electronically	as needed by Editor	advise Editor on publication issues as needed
Doershuk, John F.	Register of Professional Archaeologists Standards Board	electronically	as needed	advise Standards Board Chair on issues involving grievances stemming from Register of Professionals Archaeologists member violations of the "Standards of Research Performance" (http://rpanet.org/?page=CodesandStandards)
Doershuk, John F.	Blood Run National Historic Landmark State Management Team	Larchwood and Rock Rapids	as needed	participate in providing oversight to the on-going master planning process for the long term protection of ancient human remains and other cultural resources encompassed by the Nation Historic Landmark
Doershuk, John F.	President-elect, Midwest Archaeological Conference, Inc.	variable	two years: Fall 2019-Fall 2020	serve as per Bylaws officer role for organization
Doershuk, John F.	Register of Professional Archaeologists Task Force	electronically	as needed	policy development for prevention of sexual harassment

Appendix E: Appointments, Awards, and Service on Boards, Commissions, or Committees, Fiscal Year 2019

Staff Member	Appointment, Award, Board, Commission, or Committee Name	Meeting Location	Duration/Date	Description
Hawkins, Alan J.	Iowa Archeological Society Board	varies	at least twice annually	unite those interested in the archaeology of Iowa; foster cooperation among professional and amateur archaeologists; promote the study, investigation, and interpretation of prehistoric and historic remains in Iowa; provide for the dissemination of knowledge and research in archaeology and related disciplines; encourage the recording and preservation of sites and artifacts; and develop a constructive attitude toward these cultural resources through education and public involvement
Haury-Artz, Chérie	Iowa Archeological Society Board	varies	at least twice annually and much e-mail discussion	unite those interested in the archaeology of Iowa; foster cooperation among professional and amateur archaeologists; promote the study, investigation, and interpretation of prehistoric and historic remains in Iowa; provide for the dissemination of knowledge and research in archaeology and related disciplines; encourage the recording and preservation of sites and artifacts; and develop a constructive attitude toward these cultural resources through education and public involvement
Haury-Artz, Chérie	Iowa Archeological Society Certification Program	varies	contact with participants through e-mail	assist members of the Iowa Archeological Society to obtain training and certification in field, laboratory, and site recording categories.
Haury-Artz, Chérie	Plains Anthropological Society Board Member	varies	once annually at Plains Conference plus contact through e-mail	promotes the study of the peoples and cultures of the North American Great Plains. The Society supports the growth of knowledge concerning the physical, cultural, archaeological and linguistic variation and evolution of Plains societies. The organization disseminates research results through publication of the <i>Plains Anthropologist</i> , a quarterly, peer-reviewed academic journal and memoir series, and through the exchange of information and ideas at its annual conference. The Society actively encourages and recognizes excellence in scholarship, service to the anthropological community and the maintenance of research collections.
Haury-Artz, Chérie	Native American Council	UCC bldg. room 2520C	On-going membership. Groups meets twice a month – alternate Fridays	promotes and improves the quality of life of Native American faculty, staff, and students at the University of Iowa. The goals of the NAC are to: address the diverse needs and concerns of Native Americans on campus; act as a voice for Native faculty, staff, and students; serve as a formalized liaison between Native staff and faculty, and students, and the greater University of Iowa communities; and support university efforts towards recruitment, retention of Native faculty, staff and graduation of students.
Kendall, Bryan	Washington Historic Preservation Commission, Chairperson	Washington	Monthly	promotes preservation education in Washington and is responsible for identifying, researching, and recording information about historic buildings, districts, structures, landscapes, objects, and archeological sites.
Lensink, Stephen C.	Adjunct Assistant Professor	Iowa City	academic year 2018–2019	serve as adjunct faculty for University of Iowa Department of Anthropology
Merry, Carl	State Historical Society of Iowa, State Nominations Review Committee	Des Moines	three times annually	review and approve nominations for archaeological and architectural properties for listing on the National Register of Historic Places; review and approve archaeological and historic preservation grant applications
Noldner, Lara K.	Adjunct Assistant Professor	Iowa City	academic year 2018-2019	serve as adjunct faculty for the University of Iowa Department of Anthropology
Noldner, Lara K.	Association of Iowa Archaeologists, Past President	Newton	annually	promulgates public understanding and scientific interest in Iowa archaeology through sponsorship of field trips, meetings, and publications on the archaeology of Iowa, and it develops professional and scientific standards for report preparation, excavation, and curation of archaeological materials recovered in the State of Iowa.

Appendix E: Appointments, Awards, and Service on Boards, Commissions, or Committees, Fiscal Year 2019

Staff Member	Appointment, Award, Board, Commission, or Committee Name	Meeting Location	Duration/Date	Description
Noldner, Lara K.	Iowa Archeological Society Board	varies	at least twice annually	unite those interested in the archaeology of Iowa; foster cooperation among professional and amateur archaeologists; promote the study, investigation, and interpretation of prehistoric and historic remains in Iowa; provide for the dissemination of knowledge and research in archaeology and related disciplines; encourage the recording and preservation of sites and artifacts; and develop a constructive attitude toward these cultural resources through education and public involvement
Peterson, Cynthia L.	Association of Iowa Archaeologists, President	varies	annually	promulgates public understanding and scientific interest in Iowa archaeology through sponsorship of field trips, meetings, and publications on the archaeology of Iowa, and it develops professional and scientific standards for report preparation, excavation, and curation of archaeological materials recovered in the State of Iowa.
Reetz, Elizabeth C.	Project Archaeology, Iowa State Coordinator	varies, nationwide	biennially	act as a liaison between the national Project Archaeology network and leadership team and Iowa's Project Archaeology master teachers
Reetz, Elizabeth C.	Project Archaeology, Leadership Team Member	varies, nationwide	biennially	provide expert advice the national program, help plan and conduct the national conference, guide curriculum development, and work through other issues as needed.
Reetz, Elizabeth C.	Society for American Archaeology, Public Education Committee Chairperson	varies, nationwide	annually	provide expert advice to the Board on public education and outreach to carry out the Society's mission to provide leadership in education about archaeology.
Reetz, Elizabeth C.	Society for American Archaeology, Public Education Committee Network of State Coordinators	varies, nationwide	annually	serve as the Iowa representative as a liaison between the Public Education Committee and organizers of public education at the state level. Provide extra support as the Network's social media co-administrator
Reetz, Elizabeth C.	Society for American Archaeology, Task Force on Web Redesign	varies, nationwide	annually	participate in discussions, review draft information, and provide feedback to the Society for American Archaeology web redesign vendor during the various stages of web redesign from inception through launch
Reetz, Elizabeth C.	Iowa Archeological Society Board	varies	at least twice annually	unite those interested in the archaeology of Iowa; foster cooperation among professional and amateur archaeologists; promote the study, investigation, and interpretation of prehistoric and historic remains in Iowa; provide for the dissemination of knowledge and research in archaeology and related disciplines; encourage the recording and preservation of sites and artifacts; and develop a constructive attitude toward these cultural resources through education and public involvement
Rickers, Christy	Association of Iowa Archaeologists, President	varies	annually	promulgates public understanding and scientific interest in Iowa archaeology through sponsorship of field trips, meetings, and publications on the archaeology of Iowa, and it develops professional and scientific standards for report preparation, excavation, and curation of archaeological materials recovered in the State of Iowa.
Whittaker, William E.	Editor, <i>Journal of the Iowa Archeological Society</i>	n/a	annually	edited vol. 65 and 66 of the <i>Journal of the Iowa Archeological Society</i>
Whittaker, William E.	Iowa Archeological Society Board	n/a	at least twice annually	unite those interested in the archaeology of Iowa; foster cooperation among professional and amateur archaeologists; promote the study, investigation, and interpretation of prehistoric and historic remains in Iowa; provide for the dissemination of knowledge and research in archaeology and related disciplines; encourage the recording and preservation of sites and artifacts; and develop a constructive attitude toward these cultural resources through education and public involvement

Appendix F: OSA Reports, Fiscal Year 2019

Number	Author	Title
OSA Research Report		
Vol. 44, No. 1	Mack, Jennifer E., and Lara K. Noldner	<i>Bioarchaeological Reports on Human Skeletal Remains from Iowa and Other Proveniences</i>
OSA Technical Reports		
530	Hawkins, Alan J.	<i>Phase I Intensive Archaeological Investigation of the Proposed New Sanitary Sewer, Parcel A1 of the Land and Air Super Park Project, Sections 12–15, T82N-R8W, Linn County, Iowa</i>
707	Nansel, Blane H.	<i>FHWA No. 134940, Cultural Resources Evaluation, Davis County, Local Systems</i>
708	Nansel, Blane H.	<i>FHWA No. 133981, Cultural Resources Evaluation, Davis County, Local Systems</i>
709	Nansel, Blane H.	<i>FHWA No. 135540, Cultural Resources Evaluation, Davis County, Local Systems</i>
710	Nansel, Blane H.	<i>FHWA No. 361549, Cultural Resources Evaluation, Davis County, Local Systems</i>
724	Nansel, Blane H.	<i>FHWA No. 173700, Cultural Resources Evaluation, Hancock County, Local Systems</i>
752	Hawkins, Alan J., and Bryan S. Kendall	<i>Phase I Intensive Archaeological Investigation of Primary Roads Project IM-NHS-080-7(132)266--13-16, Cedar County, Iowa</i>
763	Carlson, Richard J.	<i>A Phase I Historic Architectural Survey of Primary Roads Project IM-080-7(132)266--13-16 Cedar County, Iowa. Technical Report 763. Office of the State Archaeologist, University of Iowa, Iowa City</i>
786	Schroeder, Maria F.	<i>Phase I Archaeological Survey and Historic Architecture Review of the Proposed Verizon IA 12 Freeport Project, Section 23, T98N-R8W, Winneshiek County, Iowa</i>
790	Davis, Warren D.	<i>Phase I Intensive Archaeological Investigation of the Proposed Fish Barrier and Embayment Project, Section 14 and 15, T70N-R18W, and Section 14 and 19, T70N-R19W Appanoose County, Iowa</i>
792	Collins, Angela R.	<i>Phase I Intensive Archaeological Investigation of the Proposed Banner Flats Wetland Enhancement Project, Section 22, T77N-R23W, Warren County, Iowa</i>
793	Collins, Angela R.	<i>Phase I Intensive Archaeological Investigation of the Proposed Northern Natural Gas Company Ventura North E-line Extension Project, Section 9, T100N-R22W, Worth County, Iowa</i>
799	Nansel, Blane H.	<i>BROS-SWAP-Co31(93)--SE-31, Cultural Resources Evaluation, Dubuque County, Local Systems</i>
800	Nansel, Blane H.	<i>BROS-SWAP-Co31(92)--SE-31, Cultural Resources Evaluation, Dubuque County, Local Systems</i>
801	Nansel, Blane H.	<i>BROS-SWAP-Co31(94)--SE-31, Cultural Resources Evaluation, Dubuque County, Local Systems</i>
802	Kendall, Bryan S.	<i>Phase I Intensive Archaeological Investigation of the Proposed Wetland Restoration Project, Green Island Wildlife Management Area, Section 29, T85N-R06E, Jackson County, Iowa</i>
803	Davis, Warren D.	<i>Phase I Intensive Archaeological Investigation of the Proposed Crisman Tract Wetland Restoration Project, Dudgeon Lake Wildlife Management Area, Section 9 and 10, T85N-R10W, Benton County, Iowa</i>
804	Whittaker, William E.	<i>Letter report of June 22, 2018, to Monica Thelen regarding cultural resources evaluation, water control structures replacement, Bank Swallow Bend Wildlife Area, DNR Work Order 97, Warren County</i>
805	Nansel, Blane H.	<i>FM-Co91(E3325)--55-91, Cultural Resources Evaluation, Warren County, Local Systems</i>
806	Nansel, Blane H.	<i>BROS-SWAP-Co06(112)--SE-06, Cultural Resources Evaluation, Benton County, Local Systems</i>
807	Collins, Angela R., and Daniel G. Horgen	<i>Phase I Intensive Archaeological Investigation of the Proposed Herbert Hoover National Historic Site Detention and Stream Realignment Project, West Branch, Cedar County, Iowa</i>
808	Nansel, Blane H.	<i>FHWA No. 146870, Cultural Resources Evaluation, Dubuque County, Local Systems</i>
810	Collins, Angela R.	<i>Phase I Intensive Archaeological Investigation of the Proposed Northern Natural Gas Company Ventura North E-line Extension Project, Sections 27, 34, and 35, T101N-R22W, Freeborn County, Minnesota</i>
811	Lepcin, Robert F., Jennifer E. Mack, and Glenn R. Storey	<i>Farris Cemetery (13MD221), Madison County, Burial Project 3247: Ground-penetrating Radar Survey</i>
812	Nansel, Blane H.	<i>BROS-SWAP-Co42(90)--FE-42, Cultural Resources Evaluation, Hardin County, Local Systems</i>
813	Kendall, Bryan S.	<i>Phase I Intensive Archaeological Investigation of the Proposed IDALS CREP Cer952105A Brietzke Wetland Project, Section 5, T95N-R21W, Cerro Gordo County, Iowa</i>
814	Kendall, Bryan S.	<i>Phase I Intensive Archaeological Investigation of the Proposed IDALS CREP Flo941603B Heinz Wetland Project, Section 3, T94N-R16W, Floyd County, Iowa</i>
815	Kendall, Bryan S.	<i>Geomorphic Study and Phase I Intensive Archaeological Investigation of the Proposed Hickory Grove Lake Dredging and Shore Armoring Project, Story County, Iowa</i>
816	Nansel, Blane H.	<i>BRS-SWAP-Co05(71)--FF-05, Cultural Resources Evaluation, Audubon County, Local Systems</i>
817	Schroeder, Maria F., and Christy S. Rickers	<i>Phase I Intensive Archaeological Investigation of the Proposed Community State Bank Sioux Rapids Tower (W18284) Project, Section 1, T93N-R37W, Buena Vista County, Iowa</i>

Appendix F: OSA Reports, Fiscal Year 2019

Number	Author	Title
818	Nansel, Blane H.	<i>FHWA No. 146880, Cultural Resources Evaluation, Dubuque County, Local Systems</i>
819	Schroeder, Maria F.	<i>Phase I Intensive Archaeological Investigation and Phase IA Historic Architectural Review of the Proposed FTC Tower Company Williamstown #15 (W18209-15) Project, Section 6, T78N-R7W, Johnson County, Iowa</i>
820	Schroeder, Maria F.	<i>Phase I Intensive Archaeological Investigation and Phase IA Historic Architectural Review of the Proposed FTC Tower Company Marysville #35 (W18209-35) Project, Section 17, T74N-R18W, Marion County, Iowa</i>
821	Schroeder, Maria F.	<i>Phase I Intensive Archaeological Investigation and Phase IA Historic Architectural Review of the Proposed FTC Tower Co. Garwin #82 (W18209-82) Project, Section 10, T84N-R15W, Tama County, Iowa</i>
822	Schroeder, Maria F.	<i>Phase I Intensive Archaeological Investigation and Phase IA Historic Architectural Review of the Proposed FTC Tower Company Winfield #91 (W18209-91) Project, Section 21, T73N-R5W, Henry County, Iowa</i>
823	Nansel, Blane H.	<i>BROS-SWAP-Co16(106)--SE-16, Cultural Resources Evaluation, Cedar County, Local Systems</i>
824	Collins, Angela R.	<i>Phase I Intensive Archaeological Investigation of the Proposed Black Hawk Marsh Shallow Water Excavations Project, Section 16, T86N-R36W, Sac County, Iowa</i>
825	Schroeder, Maria F.	<i>Phase I Intensive Archaeological Investigation of the Proposed City of Grimes-Water System Facility Project, Polk County, Iowa</i>
826	Horgen, Daniel G.	<i>Phase I Intensive Archaeological Investigation of the Proposed IDALS CREP Wetland HAR882213A, Section 13, T88N-R22W, Hardin County, Iowa</i>
827	Ingalls, Marlin R., and Angela R. Collins	<i>Phase I Historic Architectural Reconnaissance Survey of the Northern Gas Company Ventura North E-line Extension Pipeline Project, Freeborn County, Minnesota.</i>
828	Collins, Angela R.	<i>Phase I Intensive Archaeological Investigation of the Proposed Twin Ponds Hollow Second Addition Project, Section 2, T79N-R7W, Johnson County, Iowa</i>
782 rev	Schroeder, Maria F.	<i>Phase I Intensive Archaeological Investigation of the Proposed Lekwa Marsh Restoration Project, Sections 25, T96N-R22W, Cerro Gordo County, Iowa</i>
829	Nansel, Blane H.	<i>BROS-SWAP-Co70(66)--SE-70, Cultural Resources Evaluation, Muscatine County, Local Systems</i>
830	Nansel, Blane H.	<i>FHWA No. 258061, Cultural Resources Evaluation, Muscatine County, Local Systems</i>
831	Nansel, Blane H.	<i>FHWA No. 257450, Cultural Resources Evaluation, Muscatine County, Local Systems</i>
832	Nansel, Blane H.	<i>FHWA No. 257830, Cultural Resources Evaluation, Muscatine County, Local Systems</i>
833	Nansel, Blane H.	<i>FHWA No. 257690, Cultural Resources Evaluation, Muscatine County, Local Systems</i>
834	Nansel, Blane H.	<i>FHWA No. 258290, Cultural Resources Evaluation, Muscatine County, Local Systems</i>
835	Merry, Carl A.	<i>Annual Report of Cultural Resource Investigations for the Iowa Department of Transportation, Fiscal Year 2018</i>
836	Carlson, Richard J.	<i>Historical Overview of the Proposed Location of the University of Iowa Museum of Art, Block 95, Iowa City, Johnson County, Iowa</i>
837	Davis, Warren D.	<i>Phase I Intensive Archaeological Investigation of the Proposed Kaalberg FSA Agricultural Building Project, Section 31, T78N-R4W, Muscatine County, Iowa</i>
838	Nansel, Blane H.	<i>FHWA No. 018450, Cultural Resources Evaluation, Cedar County, Local Systems</i>
839	Nansel, Blane H.	<i>FHWA No. 102230, Cultural Resources Evaluation, Cedar County, Local Systems</i>
840	Nansel, Blane H.	<i>FHWA No. 102621, Cultural Resources Evaluation, Cedar County, Local Systems</i>
841	Nansel, Blane H.	<i>FHWA No. 104211, Cultural Resources Evaluation, Cedar County, Local Systems</i>
842	Nansel, Blane H.	<i>FHWA No. 105041, Cultural Resources Evaluation, Cedar County, Local Systems</i>
843	Schroeder, Maria F.	<i>Phase I Intensive Archaeological Investigation of the Proposed Kiowa Marsh Wetland Enhancement Project, Sections 1 and 2, T88N-R37W, Sac County, Iowa</i>
844	Schroeder, Maria F., and Christy S. Rickers	<i>Phase I Intensive Archaeological Investigation of the Proposed Site J Cell Tower, Hutchings Avenue, Section 2, T72N-R40W, Mills County, Iowa</i>
845	Hawkins, Alan J.	<i>Phase I Intensive Archaeological Investigation of the Proposed CREP Wetland Har862018C Project, Sections 18 and 19, T86N-R20W, Hardin County, Iowa</i>
846	Davis, Warren D., and Marlin R. Ingalls	<i>Phase I Intensive Archaeological Investigation and Phase IA Historic Architectural Review of the Proposed FTC Albia #13 Tower Project, Section 9, T72N-R17W, Monroe County, Iowa</i>
847	Davis, Warren D., and Marlin R. Ingalls	<i>Phase I Intensive Archaeological Investigation and Phase IA Historic Architectural Review of the Proposed FTC Martinsburg #65 Tower Project, Section 26, T74N-R12W, Keokuk County, Iowa</i>
848	Davis, Warren D., and Marlin R. Ingalls	<i>Phase I Intensive Archaeological Investigation and Phase IA Historic Architectural Study of the Proposed FTC Sheridan #124 Tower Project, Section 9, T81N-R15W, Poweshiek County, Iowa</i>
849	Davis, Warren D., and Marlin R. Ingalls	<i>Phase I Intensive Archaeological Investigation and Phase IA Historic Architectural Review of the Proposed FTC Belle Plaine #38 Tower Project, Section 28, 82N-R12W, Benton County, Iowa</i>
850	Davis, Warren D., and Marlin R. Ingalls	<i>Phase I Intensive Archaeological Investigation and Phase IA Historic Architectural Review of the Proposed Salem #34 Tower Project, Section 21, T70N-R6W, Henry County, Iowa</i>
851	Davis, Warren D., and Marlin R. Ingalls	<i>Phase I Intensive Archaeological Investigation and Phase IA Historic Architecture Review of the Proposed FTC Wayland #74 Tower Project, Section 8, T73N-R7W, Henry County, Iowa</i>

Appendix F: OSA Reports, Fiscal Year 2019

Number	Author	Title
852	Davis, Warren D., and Marlin R. Ingalls	<i>Phase I Intensive Archaeological Investigation and Phase IA Historic Architecture Review of the Proposed FTC Keota #29 Tower Project, Section 36, T76N-R10W, Keokuk County, Iowa</i>
853	Davis, Warren D.	<i>Phase I Intensive Archaeological Investigation of the Proposed West Lake Park Watershed Improvements Project, Section 25, 26, and 36, T78N-R2E, Scott County, Iowa</i>
854	Nansel, Blane H.	<i>BROS-SWAP-Co28(93)--SE-28, Cultural Resources Evaluation, Delaware County, Local Systems</i>
855	Davis, Warren D.	<i>Phase I Intensive Archaeological Investigation of the Proposed Greazel Pointe Development Project, Section 23, T81N-R6W, Johnson County, Iowa</i>
856	Whittaker, William E.	<i>Phase I Archaeological Survey of the Proposed Rankels Agricultural Building Project, Section 20, T73N-R7W, Henry County, Iowa</i>
857	Nansel, Blane H.	<i>STBG-SWAP-3665(619)--SG-10, Cultural Resources Evaluation, City of Independence, Buchanan County, Local Systems</i>
858	Collins, Angela R.	<i>Phase I Intensive Archaeological Investigation of the Proposed White Horse Access Oxbow Restorations Project, Section 35, T87N-R35W, and Sections 2, 3, and 11, T86N-R35W, Sac County, Iowa</i>
859	Davis, Warren D.	<i>Phase I Intensive Archaeological Investigation of the Proposed Celebration Farm Project, Section 18, T80N-R5W, Johnson County, Iowa</i>
861	Schroeder, Maria F.	<i>Phase I Intensive Archaeological Investigation of the Proposed 1907 Black Diamond Road Project, Section 35, T79N-R8W, Johnson County, Iowa</i>
862	Nansel, Blane H.	<i>FHWA No. 176580, Cultural Resurces Evaluation, Hardin County, Local Systems</i>
863	Nansel, Blane H.	<i>FHWA No. 176271, Cultural Resources Evaluation, Hardin County, Local Systems</i>
865	Nansel, Blane H.	<i>FM-Co44(84)--55-44, Cultural Resources Evaluation, Henry County, Local Systems</i>
866	Schroeder, Maria F.	<i>Phase I Intensive Archaeological Investigation of the Proposed 1651 Opie Avenue Development Project, Section 21, T81N-R6W, Johnson County, Iowa</i>
867	Carlson, Richard J.	<i>Phase I Intensive Historic Architectural Investigation of the Proposed 1651 Opie Avenue Development Project, Section 21, T81N-R6W, Johnson County, Iowa</i>
868	Horgen, Daniel G.	<i>Phase I Intensive Archaeological Investigation of the Proposed De Soto Drinking Water Treatment and Supply Upgrades Project, Sections 1819 T78N-R27W and Section 24 T78N-R28W, Dallas County, Iowa</i>
869	Horgen, Daniel G., and Maria F. Schroeder	<i>Phase IA Archaeological and Architecture History Reconnaissance of the Proposed WS-WDBI-RL05 PBM Wireless Monopole Project, Section 28, T81N-R42W, Harrison County, Iowa</i>
870	Horgen, Daniel G., and Maria F. Schroeder	<i>Phase IA Archaeological and Architecture History Reconnaissance of the Proposed WS-WDBI-RL09 PBM Wireless Monopole Project, Section 8, T80N-R41W, Harrison County, Iowa</i>
871	Horgen, Daniel G., and Maria F. Schroeder	<i>Phase IA Archaeological and Architecture History Reconnaissance of the Proposed WS-WDBI-RL10 PBM Wireless Monopole Project, Section 21, T80N-R41W, Harrison County, Iowa</i>
872	Horgen, Daniel G., and Maria F. Schroeder	<i>Phase IA Archaeological and Architecture History Reconnaissance of the Proposed WS-WDBI-RL13 PBM Wireless Monopole Project, Section 35, T80N-R42W, Harrison County, Iowa</i>
873	Horgen, Daniel G., and Maria F. Schroeder	<i>Phase IA Archaeological and Architecture History Reconnaissance of the Proposed Fairfield Rawland 2 PBM Wireless Monopole Project, Section 30, T72N-R10W, Jefferson County, Iowa</i>
874	Horgen, Daniel G., and Maria F. Schroeder	<i>Phase IA Archaeological and Historic Architectural Reconnaissance of the Proposed WS-FRFL-RL06 PBM Wireless Monopole Project, Section 26, T72N-R09W, Jefferson County, Iowa</i>
875	Horgen, Daniel G., and Maria F. Schroeder	<i>Phase IA Archaeological Assessment and Historic Architectural Review of the Proposed WS-FRFL-RL10 PBM Wireless Monopole Project, Section 15, T71N-R09W, Jefferson County, Iowa</i>
876	Horgen, Daniel G., and Maria F. Schroeder	<i>Phase IA Archaeological Assessment and Historic Architectural Review of the Proposed WS-FRFL-RL08 PBM Wireless Monopole Project, Section 1, T71N-R09W, Jefferson County, Iowa</i>
881	Schroeder, Maria F.	<i>Phase I Archaeological Survey and Phase IA Historic Architectural Review of the Proposed WS-WMSN-RL04 PBM Wireless Monopole Project, Section 13, T73N-R20W, Lucas County, Iowa</i>
882	Schroeder, Maria F.	<i>Phase I Archaeological Survey and Phase IA Historic Architectural Review of the Proposed WS-CHRT-RL14 PBM Wireless Monopole Project, Section 1, T71N-R22W, Lucas County, Iowa</i>
884	Horgen, Daniel G., and Maria F. Schroeder	<i>Phase IA Archaeological Assessment and Historic Architectural Review of the Proposed WS-CHRT-RL07 PBM Wireless Monopole Project, Section 21, T72N-R22W, Lucas County, Iowa</i>
885	Schroeder, Maria F.	<i>Phase IA Archaeological Assessment and Historic Architectural Review of the Proposed WS-CHRT-RL19 PBM Wireless Monopole Project, Section 22, T71N-R21W, Lucas County, Iowa</i>
886	Schroeder, Maria F.	<i>Phase IA Archaeological Assessment and Historic Architectural Review of the Proposed WS-CHRT-RL20 PBM Wireless Monopole Project, Section 35, T72N-R21W, Lucas County, Iowa</i>
887	Schroeder, Maria F.	<i>Phase IA Archaeological Assessment and Historic Architectural Review of the Proposed WS-CHRT-RL33 PBM Wireless Monopole Project, Section 5, T72N-R21W, Lucas County, Iowa</i>

Appendix F: OSA Reports, Fiscal Year 2019

Number	Author	Title
888	Schroeder, Maria F.	<i>Phase IA Archaeological Assessment and Historic Architectural Review of the Proposed WS-WMSN-RL02 PBM Wireless Monopole Project, Section 8, T73N-R21W, Lucas County, Iowa</i>
889	Schroeder, Maria F.	<i>Phase IA Archaeological Assessment and Historic Architectural Review of the Proposed WS-WMSN-RL25 PBM Wireless Monopole Project, Section 19, T73N-R20W, Lucas County, Iowa</i>
890	Schroeder, Maria F.	<i>Phase IA Archaeological Assessment and Historic Architectural Review of the Proposed WS-WMSN-RL30 PBM Wireless Monopole Project, Section 24, T73N-R22W, Lucas County, Iowa</i>
891	Horgen, Daniel G., and Maria F. Schroeder	<i>Phase IA Archaeological Assessment and Historic Architectural Review of the Proposed WS-ALBI-RL01 PBM Wireless Monopole Project, Section 36, T74N-R17W, Mahaska County, Iowa</i>
892	Horgen, Daniel G., and Maria F. Schroeder	<i>Phase IA Archaeological Assessment and Historic Architectural Review of the Proposed WS-MORV-RL06 PBM Wireless Monopole Project, Section 23, T71N-R18W, Monroe County, Iowa</i>
893	Horgen, Daniel G., and Maria F. Schroeder	<i>Phase IA Archaeological Assessment and Historic Architectural Review of the Proposed WS-ALBI-RL07 PBM Wireless Monopole Project, Section 28, T71N-R17W, Monroe County, Iowa</i>
894	Schroeder, Maria F.	<i>Phase I Archaeological Survey and Phase IA Historic Architectural Review of the Proposed WS-CLRD-RL05 PBM Wireless Monopole Project, Section 8, T68N-R36W, Page County, Iowa</i>
895	Schroeder, Maria F.	<i>Phase IA Archaeological Assessment and Historic Architectural Review of the Proposed WS-CLRD-RL06 PBM Wireless Monopole Project, Section 15, T68N-R37W, Page County, Iowa</i>
896	Schroeder, Maria F.	<i>Phase IA Archaeological Assessment and Historic Architectural Review of the Proposed WS-CLRD-RL13 PBM Wireless Monopole Project, Section 23, T69N-R37W, Page County, Iowa</i>
897	Schroeder, Maria F.	<i>Phase I Archaeological Survey and Phase IA Historic Architectural Review of the Proposed WS-CETN-RL16 PBM Wireless Monopole Project, Section 33, T72N-R30W, Union County, Iowa</i>
898	Schroeder, Maria F.	<i>Phase IA Archaeological Assessment and Historic Architectural Review of the Proposed WS-CETN-RL20 PBM Wireless Monopole Project, Section 19, T72N-R31W, Union County, Iowa</i>
899	Schroeder, Maria F.	<i>Phase IA Archaeological Assessment and Historic Architectural Review of the Proposed WS-CETN-RL12 PBM Wireless Monopole Project, Section 13, T71N-R31W, Union County, Iowa</i>
900	Horgen, Daniel G., and Maria F. Schroeder	<i>Phase IA Archaeological Assessment and Historic Architectural Review of the Proposed WS-BKBG-RL02 PBM Wireless Monopole Project, Section 19, T72N-R15W, Wapello County, Iowa</i>
901	Horgen, Daniel G., and Maria F. Schroeder	<i>Phase IA Archaeological Assessment and Historic Architectural Review of the Proposed WS-BKBG-RL05 PBM Wireless Monopole Project, Section 30, T71N-R14W, Wapello County, Iowa</i>
902	Schroeder, Maria F.	<i>Phase IA Archaeological Assessment and Historic Architectural Review of the Proposed WS-BKBG-RL08 PBM Wireless Monopole Project, Section 22, T72N-R15W, Wapello County, Iowa</i>
903	Horgen, Daniel G., and Maria F. Schroeder	<i>Phase IA Archaeological Assessment and Historic Architectural Review of the Proposed WS-NWVR-RL03 PBM Wireless Monopole Project, Section 20, T74N-R25W, Warren County, Iowa</i>
904	Schroeder, Maria F.	<i>Phase IA Archaeological Assessment and Historic Architectural Review of the Proposed WS-NWVR-RL07 PBM Wireless Monopole Project, Section 17, T74N-R25W, Warren County, Iowa</i>
905	Schroeder, Maria F.	<i>Phase IA Archaeological Assessment and Historic Architectural Review of the Proposed WS-CHRT-RL17 PBM Wireless Monopole Project, Section 6, T70N-R21W, Wayne County, Iowa</i>
906	Horgen, Daniel G., and Maria F. Schroeder	<i>Phase IA Archaeological Assessment and Historic Architectural Review of the Proposed WS-SYMR-RL05 PBM Wireless Monopole Project, Section 17, T68N-R20W, Wayne County, Iowa</i>
907	Horgen, Daniel G., and Maria F. Schroeder	<i>Phase IA Archaeological Assessment and Historic Architectural Review of the Proposed WS-SYMR-RL07 PBM Wireless Monopole Project, Section 7, T67N-R20W, Wayne County, Iowa</i>
908	Schroeder, Maria F.	<i>Phase IA Archaeological Assessment and Historic Architectural Review of the Proposed WS-GNFD-RL04 PBM Wireless Monopole Project, Section 23, T76N-R32W, Adair County, Iowa</i>
909	Schroeder, Maria F.	<i>Phase IA Archaeological Assessment and Historic Architectural Review of the Proposed WS-GNFD-RL05 PBM Wireless Monopole Project, Section 24, T76N-R31W, Adair County, Iowa</i>
910	Schroeder, Maria F.	<i>Phase IA Archaeological Assessment and Historic Architectural Review of the Proposed WS-GNFD-RL12 PBM Wireless Monopole Project, Section 13, T75N-R31W, Adair County, Iowa</i>
911	Schroeder, Maria F.	<i>Phase I Archaeological Survey and Phase IA Historic Architectural Review of the Proposed WS-CNVL-RL04 PBM Wireless Monopole Project, Section 32, T69N-R18W, Appanoose County, Iowa</i>

Appendix F: OSA Reports, Fiscal Year 2019

Number	Author	Title
912	Schroeder, Maria F.	<i>Phase I Archaeological Survey and Phase IA Historic Architectural Review of the Proposed WS-CNVL-RL07 PBM Wireless Monopole Project, Section 12, T69N-R18W, Appanoose County, Iowa</i>
913	Schroeder, Maria F.	<i>Phase I Archaeological Survey and Phase IA Historic Architectural Review of the Proposed WS-MORV-RL03 PBM Wireless Monopole Project, Section 18, T70N-R17W, Appanoose County, Iowa</i>
914	Schroeder, Maria F.	<i>Phase IA Archaeological Assessment and Historic Architectural Review of the Proposed WS-MORV-RL04 PBM Wireless Monopole Project, Section 4, T70N-R18W, Appanoose County, Iowa</i>
915	Schroeder, Maria F.	<i>Phase I Archaeological Survey and Phase IA Historic Architectural Review of the Proposed WS-MORV-RL05 PBM Wireless Monopole Project, Section 5, T70N-R19W, Appanoose County, Iowa</i>
916	Horgen, Daniel G., and Maria F. Schroeder	<i>Phase IA Archaeological and Architecture History Review of the Proposed WS-BKBG-RL01 PBM Wireless Monopole Project, Section 1, T70N-R16W, Appanoose County, Iowa</i>
917	Schroeder, Maria F.	<i>Phase IA Archaeological Assessment and Historic Architectural Review of the Proposed WS-SYMR-RL03 PBM Wireless Monopole Project, Section 21, T68N-R19W, Appanoose County, Iowa</i>
918	Schroeder, Maria F.	<i>Phase IA Archaeological Assessment and Historic Architectural Review of the Proposed WS-ADBN-RL07 PBM Wireless Monopole Project, Section 25, T80N-R36W, Audubon County, Iowa</i>
919	Schroeder, Maria F.	<i>Phase IA Archaeological Assessment and Historic Architectural Review of the Proposed WS-ADBN-RL24 PBM Wireless Monopole Project, Section 14, T81N-R36W, Audubon County, Iowa</i>
920	Schroeder, Maria F.	<i>Phase IA Archaeological Assessment and Historic Architectural Review of the Proposed WS-ADBN-RL34 PBM Wireless Monopole Project, Section 2, T80N-R36W, Audubon County, Iowa</i>
921	Schroeder, Maria F.	<i>Phase I Archaeological Survey and Phase IA Historic Architectural Review of the Proposed WS-OSCE-RL12 PBM Wireless Monopole Project, Section 7, T73N-R24W, Clarke County, Iowa</i>
922	Schroeder, Maria F.	<i>Phase IA Archaeological Assessment and Historic Architectural Review of the Proposed WS-OSCE-RL27 PBM Wireless Monopole Project, Section 34, T73N-R24W, Clarke County, Iowa</i>
923	Schroeder, Maria F.	<i>Phase IA Archaeological Assessment and Historic Architectural Review of the Proposed WS-WDBI-RL04 PBM Wireless Monopole Project, Section 34, T81N-R43W, Harrison County, Iowa</i>
924	Nansel, Blane H.	<i>FM-C093(90)--55-93, Cultural Resources Evaluation, Wayne County, Local Systems</i>
925	Nansel, Blane H.	<i>FM-C093(91)--55-93, Cultural Resources Evaluation, Wayne County, Local Systems</i>
927	Whittaker, William E.	<i>Letter report of August 29, 2018, to Monica Thelen regarding archaeological evaluation of the proposed Manchester Fish Hatchery improvements project, Section 2, T88-R5W, Delaware County, Iowa</i>
928	Anderson, Mark L.	<i>Phase I Intensive Archaeological Investigation of the Proposed Clarion Drinking Water Project, Section 6, T91N-R24W, Wright County, Iowa</i>
929	Whittaker, William E., Marlin R. Ingalls, and Christy S. Rickers	<i>Phase I Intensive Archaeological Investigation of the Proposed Verizon IA08 Defiance Tower Project, Section 12, T81N-R39W, Shelby County, Iowa</i>
930	Hawkins, Alan J.	<i>Phase I Intensive Archaeological Investigation of the Proposed Klosterman Development Project, Section 30, T81N-R6W, Johnson County, Iowa</i>
931	Schroeder, Maria F.	<i>Phase I Intensive Archaeological Investigation of the Proposed 3169 Rapid Creek Trail NE, Iowa City Development Project, Johnson County, Iowa</i>
932	Horgen, Daniel G.	<i>Phase I Intensive Archaeological Investigation of an Abandoned Coal Mine Reclamation Project (a.k.a. Pleasant AML Site), Section 12 and 13, T73N-R20W, Lucas County, Iowa</i>
933	Anderson, Mark L.	<i>Phase IA Archaeological Reconnaissance of the Proposed May City Well Field Project, Section 8, T98N-R39W, Osceola County, Iowa</i>
934	Anderson, Mark L.	<i>Phase IA Archaeological Reconnaissance Investigation of the Proposed Osceola Rural Water Pipeline Project, Osceola and Dickinson Counties, Iowa.</i>
935	Whittaker, William E.	<i>Phase IA Archaeological Reconnaissance of An Addition to the Proposed Nora Springs Wastewater Treatment Facility Project, Section 17, T96N-R18W, Floyd County, Iowa</i>
936	Whittaker, William E., and Maria F. Schroeder	<i>Phase I Archaeological and Phase IA Historic Architectural Review of the Proposed FTC Marengo #18 (GSS# W18209-18) Tower Project, Section 6, T81N-R10W, Iowa County, Iowa</i>
937	Whittaker, William E., and Maria F. Schroeder	<i>Phase I Archaeological and Phase IA Historic Architectural Review of the Proposed FTC Traer #48 (GSS# W18209-48) Tower Project, Section 16, T85N-R14W, Tama County, Iowa</i>
938	Whittaker, William E., and Maria F. Schroeder	<i>Phase I Archaeological and Phase IA Historic Architectural Review of the Proposed FTC Fremont #84 (GSS# W18209-84) Tower Project, Section 30, T74N-R14W, Keokuk County, Iowa</i>
939	Whittaker, William E., and Maria F. Schroeder	<i>Phase I Archaeological and Phase IA Historic Architectural Review of the Proposed FTC Gladbrook #110 (GSS# W18209-110) Tower Project, Section 14, T85N-R16W, Tama County, Iowa</i>

Appendix F: OSA Reports, Fiscal Year 2019

Number	Author	Title
941	Anderson, Mark L.	<i>Phase I Intensive Archaeological Investigation of Primary Roads Project NHSX-020-1(179)--3H-97, a.k.a. PIN 17-97-020-010, Woodbury County, Iowa</i>
942	Whittaker, William E.	<i>Phase I Intensive Archaeological Investigation of the Proposed Woodland Ridge Subdivision Water Connection Project, Section 28, T79N-R06W, Johnson County, Iowa</i>
943	Nansel, Blane H.	<i>BROS-SWAP-Co31(101)--SE-31, Cultural Resources Evaluation, Dubuque County, Local Systems</i>
944	Kendall, Bryan S.	<i>Phase I Intensive Archaeological Investigation of the Proposed Kay's Triangle Wetland Project, Section 32, T81N-R22W, Polk County, Iowa</i>
945	Carlson, Richard J.	<i>A Phase I Historic Architectural Survey of Primary Roads Project ITS-080-5(353)168--25-50, Jasper County, Iowa</i>
946	Hawkins, Alan J.	<i>Phase I Intensive Archaeological Investigation of Primary Roads Project ITS-080-5(353)168--25-50, Jasper County, Iowa</i>
947	Kendall, Bryan S.	<i>Phase IA Archaeological Investigation of the Proposed National Guard New Building Project, Section 4, T89N-R13W, Black Hawk County, Iowa</i>
948	Kendall, Bryan S.	<i>Phase I Archaeological Investigation of the Proposed National Guard New Building Project, Section 31, T88N-R48W, Woodbury County, Iowa</i>
949	Carlson, Richard J.	<i>E-mail report of September 18, 2018, to William Whittaker regarding Bender Hall research, 2005 Campus St., Cedar Falls, Iowa 50613</i>
950	Nansel, Blane H.	<i>SBRC-Co75(155)--8D-75, Cultural Resources Evaluation, Plymouth County, Local Systems</i>
951	Nansel, Blane H.	<i>FM-Co87(55)--55-87, Cultural Resources Evaluation, Taylor County, Local Systems</i>
952	Hawkins, Alan J.	<i>Phase I Intensive Archaeological Investigation of the Proposed Modifications to the Wilton Wastewater Treatment Plant, Section 6, T78N-R1W, Muscatine County, Iowa</i>
953	Nansel, Blane H.	<i>BROS-Co24(119)--8J-24, Cultural Resources Evaluation, Crawford County, Local Systems</i>
954	Nansel, Blane H.	<i>FHWA No. 130370, Cultural Resources Evaluation, Crawford County, Local Systems</i>
955	Nansel, Blane H.	<i>BHS-SWAP-Co54(117)--FC-54, Cultural Resources Evaluation, Keokuk County, Local Systems</i>
790 Rev	Davis, Warren D.	<i>Phase I Intensive Archaeological Investigation of the Proposed Rathbun Lake Fish Barrier and Embayment Project, T70N-R18W and T70N-R19W, Appanoose County, Iowa</i>
956	Davis, Warren D.	<i>Phase I Intensive Archaeological Investigation of the Proposed Timber Pointe Estate Project, Section 33, T81N-R6W, Johnson County, Iowa</i>
957	Davis, Warren D.	<i>Phase I Intensive Archaeological Investigation of the Proposed Wray Subdivision Project, Section 13, T81N-R5W, Johnson County, Iowa</i>
958	Nansel, Blane H.	<i>BROS-Co20(114)--8J-20, Cultural Resources Evaluation, Clarke County, Local Systems</i>
959	Nansel, Blane H.	<i>BROS-Co20(93)--5F-20, Cultural Resources Evaluation, Clarke County, Local Systems</i>
960	Hawkins, Alan J.	<i>Phase I Intensive Archaeological Investigation of the Proposed Waukon Wastewater Treatment Plant Improvements Project, Sections 31 and 32, T98N-R5W, Allamakee County, Iowa</i>
962	Messerole, Megan H. Stroh, and William E. Whittaker	<i>Phase I Intensive Archaeological Investigation of the Proposed Gilbert Water Treatment Plant Project, Sections 4 and 5, T84N-R24W, Story County, Iowa</i>
963	Nansel, Blane H.	<i>L-C-193, Cultural Resources Evaluation, Washington County, Local Systems</i>
964	Schroeder, Maria F.	<i>Phase I Archaeological Investigation and Phase IA Historic Architectural Review of the Proposed FTC North English #32 Tower Project, Section 2, T77N-R11W, Keokuk County, Iowa</i>
965	Schroeder, Maria F.	<i>Phase I Archaeological Investigation and Phase IA Historic Architectural Review of the Proposed FTC Downey #131 Tower Project, Section 36, T79N-R5W, Johnson County, Iowa</i>
966	Horgen, Daniel G.	<i>Phase I Intensive Archaeological Investigation of the Proposed CC-004-Lacina, IEDA-CDBG Project, Section 18, T80N-R07W, Johnson County, Iowa</i>
967	Schroeder, Maria F.	<i>Phase I Intensive Archaeological Investigation and Historic Architectural Survey of the Proposed Oxford Farmstead Split Project, Section 16, T80N-R8W, Johnson County, Iowa</i>
968	Davis, Warren D.	<i>Phase I Intensive Archaeological Investigation of the Proposed Marion AirCom Park Development Project, Section 3, T83N-R6W, Linn County, Iowa</i>
969	Schroeder, Maria F.	<i>Phase I Intensive Archaeological Investigation of the Proposed Clinton Pump Stations Project, Section 6, T81N-R7E, Clinton County, Iowa</i>
970	Nansel, Blane H.	<i>BROS-SWAP-Co33(134)--SE-33, Cultural Resources Evaluation, Fayette County, Local Systems</i>
971	Davis, Warren D.	<i>Phase I Intensive Archaeological Investigation of the Proposed Cedar Valley Habitat for Humanity Redevelopment Project, 1533 E Avenue NW, Cedar Rapids, Linn County, Iowa</i>
972	Horgen, Daniel G., and Christy S. Rickers	<i>Phase I Intensive Archaeological Investigation of the Proposed City of Lake Park Water System Improvements Project, Sections 27, 32-34 T100N-R38W, Dickinson County, Iowa</i>
973	Nansel, Blane H.	<i>FHWA No. 102631, Cultural Resources Evaluation, Cedar County, Local Systems</i>
974	Davis, Warren D.	<i>Phase I Intensive Archaeological Investigation of the Proposed Five Island Feeder Tie SL 16170 Project, Sections 7, 8, 17, and 18 T96N-32W, Palo Alto County, Iowa</i>
975	Horgen, Daniel G.	<i>Phase I Intensive Archaeological Investigation of the Proposed Bellevue North Water Main Extension Project, Jackson County, Iowa</i>
976	Kendall, Bryan S.	<i>Phase I Intensive Archaeological Investigation of the Proposed Munn Woods Sewer Rehabilitation and Access Road Project, Ames, Sections 4 and 5, T83N-R24W, Story County, Iowa</i>
977	Schroeder, Maria F.	<i>Phase I Intensive Archaeological Investigation of the Proposed Monroe Wastewater Treatment Improvements Project, City of Monroe, Jasper County, Iowa</i>

Appendix F: OSA Reports, Fiscal Year 2019

Number	Author	Title
978	Davis, Warren D.	<i>Phase I Intensive Archaeological Investigation of the Proposed Charles City Wastewater Treatment Plant Expansion Project, Sections 7 and 18, T95N-R15W, and Section 1, T95N-R16W, Floyd County, Iowa</i>
979	Nansel, Blane H.	<i>IMN-080-3(210)133--0E-77, Cultural Resources Evaluation, Polk County, Primary Roads</i>
980	Collins, Angela R.	<i>The Quaker Mill Dam. Freestanding panel.</i>
981	Davis, Warren D.	<i>Phase I Intensive Archaeological Investigation of the Proposed Merjent NNG IAB49101 Merrill Project, Section 2 and 11, T91N-R46W, Plymouth County, Iowa</i>
982	Nansel, Blane H.	<i>BROS-SWAP-Coo4(106)--SE-04, Cultural Resources Evaluation, Appanoose County, Local Systems</i>
983	Schroeder, Maria F.	<i>Phase I Intensive Archaeological Investigation of the Proposed Blue Wing Wetland Project, Section 5, T96N-R34W, Palo Alto County, Iowa</i>
984	Schroeder, Maria F.	<i>Phase I Intensive Archaeological Investigation and Phase IA Historic Architectural Review of the Proposed FTC Vinton #9 (GSS W18209-9) Tower Project, Section 30, T85N-R10W, Benton County, Iowa</i>
985	Schroeder, Maria F.	<i>Phase I Intensive Archaeological Investigation and Phase IA Historic Architectural Review of the Proposed FTC West Benton #128 (GSS W18209-128) Tower Project, Section 31, T84N-R11W, Benton County, Iowa</i>
986	Schroeder, Maria F.	<i>Phase I Intensive Archaeological Investigation and Phase IA Historic Architectural Review of the Proposed FTC Traer #48 (GSS W18209-48) Project, Section 9, T85N-R14W, Tama County, Iowa</i>
987	Schroeder, Maria F.	<i>Phase I Intensive Archaeological Investigation of the Proposed FTC Deep River #99 (GSS W18209-99) Tower Project, Section 9, T78N-R13W, Poweshiek County, Iowa</i>
988	Horgen, Daniel G.	<i>Phase I Intensive Archaeological Investigation of the Proposed CC-015-Sippy IEDA-CDBG Project, Section 16, T80N-R08W, Johnson County, Iowa</i>
989	Horgen, Daniel G.	<i>Phase I Intensive Archaeological Investigation of the Proposed CC-016-Sippy IEDA-CDBG Project, Section 16, T80N-R08W, Johnson County, Iowa</i>
990	Nansel, Blane H.	<i>L-C-203, Cultural Resources Evaluation, Washington County, Local Systems</i>
991	Nansel, Blane H.	<i>L-B-178, Cultural Resources Evaluation, Washington County, Local Systems</i>
992	Nansel, Blane H.	<i>L-C-292, Cultural Resources Evaluation, Washington County, Local Systems</i>
860	Carlson, Richard J.	<i>Historic Architectural Reconnaissance Survey of the Second Street Commercial Area in Webster City, Hamilton County, Iowa</i>
658, 771 rev	Kendall, Bryan S.	<i>Phase I Intensive Archaeological Investigation of the Proposed Anderson 400 IEDA Project, Sections 10, 11, and 14, T79N-R05E, Scott County, Iowa</i>
993	Whittaker, William E.	<i>Archaeological Desktop Assessment of the Proposed SE 14th Street Bioswales Project, Des Moines, Polk County, Iowa</i>
995	Collins, Angela R.	<i>Phase I Intensive Archaeological Investigation of the Proposed Northern Natural Gas Company M511B Galena to Dubuque ILI Modifications Project, Dubuque County, Iowa</i>
996	Collins, Angela R.	<i>Phase I Intensive Archaeological Investigation of the Proposed Northern Natural Gas Company M511B Galena to Dubuque ILI Modifications Digs Project, Section 2, T28N-R2W, and Section 5, T28N-R1W, Jo Daviess County, Illinois</i>
998	Schroeder, Maria F.	<i>Archaeological Desktop Assessment and Historic Architectural Review of the Proposed WS-MRNG-RL01 Pole, Section 18, T80N-R10W, Iowa County, Iowa</i>
999	Schroeder, Maria F., and William E. Whittaker	<i>Additional Phase I Intensive Archaeological Investigation of the Proposed Lekwa Marsh WMA Restoration Project, Section 25, T96N-R22W, Cerro Gordo County, Iowa</i>
1000	Anderson, Mark L. and Bryan S. Kendall	<i>Bank Stabilization Data Recovery for the Dixon Site (13WD8), an Oneota Occupation in Northwest Iowa. Primary Roads Project, STPN-031-1(41)--2J-97, Woodbury County, Iowa</i>
1001	Ingalls, Marlin R.	<i>Phase I Historic Architectural Review of the Fairview Cemetery (04-00527) for the Proposed WS-MORV-RL03 PBM Wireless Monopole Project, Section 18, T70N-R17W, Appanoose County, Iowa</i>
1002	Carlson, Richard J.	<i>Phase I Intensive Historic Architectural Investigation of the Proposed IEDA-CDBG East Iowa Bible Camp Project, Sections 2 and 11, T78N-R12W, Iowa County, Iowa</i>
1003	Nansel, Blane H.	<i>NHFP-GWML(001)--2F-00, Cultural Resources Evaluation, Appanoose County, Local Systems</i>
1004	Nansel, Blane H.	<i>NHFP-C017(083)--2F-17, Cultural Resources Evaluation, Cerro Gordo County, Local Systems</i>
1005	Kendall, Bryan S.	<i>Phase I Intensive Archaeological Investigation of the Proposed Marengo Levee Improvement Project, Iowa County, Iowa</i>
1006	Davis, Warren D.	<i>Phase I Intensive Archaeological Investigation of the Proposed Ellery Subdivision Project, Section 30, T80N-R7W, Johnson County, Iowa</i>
1007	Davis, Warren D.	<i>Phase I Intensive Archaeological Investigation of the Proposed Pigeon Timber Subdivision, Section 26, T80N-R6W, Johnson County, Iowa</i>
1008	Hawkins, Alan J.	<i>Phase I Intensive Archaeological Investigation of the Proposed Manchester Municipal Airport Improvements Project, Section 25, T89N-R06W, Delaware County, Iowa</i>
1009	Carlson, Richard J.	<i>Phase I Intensive Historic Architectural Investigation of the Proposed Manchester Municipal Airport Project, Section 25, T89N-R06W, Delaware County, Iowa</i>
1010	Kendall, Bryan S.	<i>Phase I Intensive Archaeological Investigation of the Proposed Estherville Des Moines River Improvements Project, Section 31, T99N-R33W and Sections 10 and 15, T99N-R34W, Emmet County, Iowa</i>
1011	Schroeder, Maria F.	<i>Phase I Intensive Archaeological Investigation and Historic Architectural Survey of the Proposed Wyn Gregor Subdivision Project, Section 12, T81N-R7W, Johnson County, Iowa</i>

Appendix F: OSA Reports, Fiscal Year 2019

Number	Author	Title
1012	Collins, Angela R.	<i>Phase I Intensive Archaeological Investigation of the Proposed Terrace Hill Stormwater Erosion Reduction Project, Des Moines, Polk County, Iowa</i>
1013	Nansel, Blane H.	<i>BROS-SWAP-Co73(134)--SE-73, Cultural Resources Evaluation, Page County, Local Systems</i>
1014	Nansel, Blane H.	<i>FHWA No. 342610, Cultural Resources Evaluation, Webster County, Local Systems</i>
1015	Nansel, Blane H.	<i>FHWA No. 091470, Cultural Resources Evaluation, Webster County, Local Systems</i>
1016	Nansel, Blane H.	<i>FHWA No. 360900, Cultural Resources Evaluation, Webster County, Local Systems</i>
1017	Nansel, Blane H.	<i>FHWA No. 342045, Cultural Resources Evaluation, Webster County, Local Systems</i>
1018	Carlson, Richard J.	<i>Cultural Resource Identification Survey: Historic Architectural Investigation of the Proposed Eagle Crossing Business Park IEDA Project, Section 18, T72N-R43W, Mills County, Iowa</i>
1020	Collins, Angela R.	<i>The West Fork of the Des Moines River Water Trail.</i>
1021	Nansel, Blane H.	<i>STBG-SWAP-Co65(105)--FG-65, Cultural Resources Evaluation, Mills County, Local Systems</i>
1022	Nansel, Blane H.	<i>BHOS-SWAP-Co27(66)--FB-27, Cultural Resources Evaluation, Decatur County, Local Systems</i>
1023	Nansel, Blane H.	<i>BRS-SWAP-Co82(321)--FF-82, Cultural Resources Evaluation, Scott County, Local Systems</i>
1024	Hawkins, Alan J.	<i>Phase I Intensive Archaeological Investigation of Primary Roads Project IMN-080-3(210)133--OE-77, a.k.a. PIN 16-77-080-030-01, Polk County, Iowa</i>
1026	Nansel, Blane H.	<i>FHWA No. 157050, Cultural Resources Evaluation, Franklin County, Local Systems</i>
1027	Nansel, Blane H.	<i>FHWA No. 164770, Cultural Resources Evaluation, Grundy County, Local Systems</i>
1028	Nansel, Blane H.	<i>BROS-SWAP-Co35(100)--SE-35, Cultural Resources Evaluation, Franklin County, Local Systems</i>
1029	Nansel, Blane H.	<i>BROS-SWAP-Co35(101)--FF-35, Cultural Resources Evaluation, Franklin County, Local Systems</i>
1030	Nansel, Blane H.	<i>LFM-B690409--7X-55, Cultural Resources Evaluation, Kossuth County, Local Systems</i>
1031	Nansel, Blane H.	<i>BROS-SWAP-Co73(133)--SE-73, Cultural Resources Evaluation, Page County, Local Systems</i>
1033	Nansel, Blane H.	<i>BRS-SWAP-Co85(W19)--FF-85, Cultural Resources Evaluation, Story County, Local Systems</i>
1034	Davis, Warren D.	<i>Phase I Intensive Archaeological Investigation of the Proposed Sedan Bottoms WMA Tile Project, Section 32, T68N-R16W, and Section 5, T67N-R16W, Appanoose County, Iowa</i>
1035	Nansel, Blane H.	<i>BROS-SWAP-Co12(105)--FE-12, Butler County, Local Systems</i>
1036	Davis, Warren D., and Marlin R. Ingalls	<i>Phase I Intensive Archaeological Investigation and Phase IA Historic Architectural Review of the Proposed Ewing Park LE Tower Project, Section 26, T78N-R24W, Polk County, Iowa</i>
1037	Nansel, Blane H.	<i>BRS-SWAP-Co83(xx)--FF-83, Shelby County, Local Systems</i>
1038	Nansel, Blane H.	<i>FHWA No. 358475, Cultural Resources Evaluation, Wright County, Local Systems</i>
1039	Nansel, Blane H.	<i>FHWA No. 358485, Cultural Resources Evaluation, Wright County, Local Systems</i>
1040	Nansel, Blane H.	<i>FHWA No. 358911, Cultural Resources Evaluation, Wright County, Local Systems</i>
1041	Davis, Warren D.	<i>Phase I Intensive Archaeological Investigation of the Proposed DNR Pine Lake State Park Project, Section 4, T87N-R19W, Hardin County, Iowa</i>
1042	Schroeder, Maria F.	<i>Phase I Intensive Archaeological Investigation of the Proposed Atwood Development Project, Section 12, T78N-R5W, Johnson County, Iowa</i>
1043	Nansel, Blane H.	<i>BROS-SWAP-Co14(M27)--SE-14, Cultural Resources Evaluation, Carroll County, Local Systems</i>
1044	Ingalls, Marlin R.	<i>Phase I Historic Architecture Survey of the Proposed Garnavillo South Main Street Permeable Paving and Drainage Replacement Project, Clayton County, Iowa</i>
1045	Nansel, Blane H.	<i>BROS-SWAP-1987(601)--SE-21, Cultural Resources Evaluation, Clay County, Local Systems</i>
1046	Nansel, Blane H.	<i>FHWA No. 224230, Cultural Resources Evaluation, Louisa County, Local Systems</i>
1047	Ingalls, Marlin R.	<i>Historic Architectural Review and Archaeological Desktop Review of the Proposed U.S. Cellular 760498 Wireless Monopole Project, Iowa State Fairgrounds, Des Moines, Polk County, Iowa</i>
1048	Nansel, Blane H.	<i>FHWA No. 353400, Cultural Resources Evaluation, Woodbury County, Local Systems</i>
1049	Horgen, Daniel G.	<i>Phase I Intensive Archaeological Investigation of the O'Rourke Parcels E029-030, IEDA-CDBG Project, Sections 34-35, T78N-R12W, and Section 27, T78N-R11W, Iowa County, Iowa</i>
1050	Hawkins, Alan J.	<i>Phase I Intensive Archaeological Investigation of the Proposed Redwing Estates Development Project, Section 21, T79N-R05W, Johnson County, Iowa</i>
1051	Nansel, Blane H.	<i>LB-271507, Cultural Resources Evaluation, Plymouth County, Local Systems</i>
1052	Nansel, Blane H.	<i>LC-351570, Cultural Resources Evaluation, Plymouth County, Local Systems</i>
1053	Nansel, Blane H.	<i>LC-140107, Cultural Resources Evaluation, Plymouth County, Local Systems</i>

Appendix F: OSA Reports, Fiscal Year 2019

Number	Author	Title
1054	Nansel, Blane H.	<i>LC-343204, Cultural Resources Evaluation, Plymouth County, Local Systems</i>
1055	Schroeder, Maria F.	<i>Archaeological Desktop Assessment and Historic Architecture Review of the Proposed New Virginia-Osceola Antenna Project, Section 7, T74N-R25W, Warren County, Iowa</i>
1056	Nansel, Blane H.	<i>L-(GO-2)--73-70, Cultural Resources Evaluation, Muscatine County, Local Systems</i>
1057	Nansel, Blane H.	<i>LFM-B891900-7X-55, Cultural Resources Evaluation, Kossuth County, Local Systems</i>
1058	Nansel, Blane H.	<i>LFM-B791290-7X-55, Cultural Resources Evaluation, Kossuth County, Local Systems</i>
1060	Nansel, Blane H.	<i>BROS-SWAP-Coog(80)--SE-09, Cultural Resources Evaluation, Bremer County, Local Systems</i>
1061	Nansel, Blane H.	<i>L-L110-111--73-09, Cultural Resources Evaluation, Bremer County, Local Systems</i>
1062	Nansel, Blane H.	<i>LFM-L-1-23-7X-09, Cultural Resources Evaluation, Bremer County, Local Systems</i>
1063	Nansel, Blane H.	<i>L-L-9-118--73-09, Cultural Resources Evaluation, Bremer County, Local Systems</i>
1065	Anderson, Mark L.	<i>Phase I Intensive Archaeological Investigation of the Proposed Utsler Development Project, Section 12, T77N-R6W, Johnson County, Iowa</i>
1066	Collins, Angela R.	<i>Phase I Intensive Archaeological Investigation of the Proposed Gent IEDA-CDBG English River WMA Watershed Project, Sections 19, 20, 29, and 30, T78N-R11W, Iowa County, Iowa</i>
1067	Horgen, Daniel G.	<i>Phase I Intensive Archaeological Investigation of the Proposed Achenbach-Knipfer, IEDA-CDBG Project, Sections 13 and 24, T78N-R11W, Iowa County, Iowa</i>
1068	Nansel, Blane H.	<i>RG2017-240ST-0001, Cultural Resources Evaluation, Ringgold County, Local Systems</i>
1069	Schroeder, Maria F.	<i>Reconnaissance-Level Historic Architectural Survey of the Proposed Bike Trail Along a Former Railroad Right-of-Way, from Jonquil Avenue to 100th Street, Cerro Gordo County, Iowa</i>
1070	Davis, Warren D.	<i>Phase I Intensive Archaeological Investigation of the Proposed Northern Natural Gas IAB660001 Ames BL MP 6.52 Project, Section 6, T83N-R26W, and Section 1, T83N-R27W, Boone County, Iowa</i>
1071	Nansel, Blane H.	<i>LB-053506, Cultural Resources Evaluation, Plymouth County, Local Systems</i>
1072	Nansel, Blane H.	<i>LC-032802, Cultural Resources Evaluation, Plymouth County, Local Systems</i>
1073	Nansel, Blane H.	<i>LC-272201, Cultural Resources Evaluation, Plymouth County, Local Systems</i>
1074	Nansel, Blane H.	<i>LC-050140, Cultural Resources Evaluation, Plymouth County, Local Systems</i>
1075	Davis, Warren D.	<i>Phase I Intensive Archaeological Investigation of the Proposed DNR Dallas Center Wastewater Treatment Plant Upgrade Project, Section 12, T79N-R27W, Dallas County, Iowa</i>
1076	Anderson, Mark L.	<i>Phase I Intensive Archaeological Investigation of the Proposed City of Madrid WWTF Upgrade Project, Section 35, T82N-R26W, Boone County, Iowa</i>
1077	Nansel, Blane H.	<i>BROS-CHBP-Co51()-GA-51, Cultural Resources Evaluation, Jefferson County, Local Systems</i>
1078	Nansel, Blane H.	<i>BROS-CHBP-Co51()-GB-51, Cultural Resources Evaluation, Jefferson County, Local Systems</i>
1079	Hawkins, Alan J.	<i>Phase I Intensive Archaeological Investigation of the Proposed Iowa Army National Guard Building Project, Section 4, T89N-R13W, Black Hawk County, Iowa</i>
1080	Nansel, Blane H.	<i>BROS-SWAP-4650(601)--SE-51, Cultural Resources Evaluation, Jefferson County, Local Systems</i>
1081	Carlson, Richard J.	<i>Cultural Resource Identification Survey: Historic Architectural Investigation of the Proposed Bondurant Certification Site IEDA Project, Section 1, T79N-R23W, Polk County, Iowa</i>
1082	Hawkins, Alan J.	<i>Phase I Intensive Archaeological Investigation of the Proposed Iowa Economic Development Authority Bondurant Certified Site Project, Section 1, T79N-R23W, Polk County, Iowa</i>
1083	Nansel, Blane H.	<i>FHWA No. 265000, Cultural Resources Evaluation, Page County, Local Systems</i>
1084	Nansel, Blane H.	<i>BROS-SWAP-Co31(103)--FE-31, Cultural Resources Evaluation, Dubuque County, Local Systems</i>
1085	Hawkins, Alan J.	<i>Phase I Intensive Archaeological Investigation of the Proposed Fort Dodge CWSRF Lift Station Replacement Project, Sections 17 and 18, T89N-R28W, Webster County, Iowa</i>
1086	Collins, Angela R.	<i>Phase I Intensive Archaeological Investigation of the Proposed JCSWD Downes IEDA-CDBG Project, Section 27, T80N-R8W, Johnson County, Iowa</i>
1087	Collins, Angela R.	<i>Phase I Intensive Archaeological Investigation of the Proposed CC-078-Tandy IEDA-CDBG Project, Sections 25 and 26, T80N-R8W, Johnson County, Iowa</i>
1088	Kendall, Bryan S.	<i>Phase I Intensive Archaeological Investigation of the Proposed Manchester Heater Replacement Project, Section 32, T89N-R05W, Delaware County, Iowa</i>
1089	Davis, Warren D.	<i>Phase I Intensive Archaeological Investigation of the Proposed NGPL Oskaloosa Lateral Pipeline Relocation Workspace Project, Section 11, T75N-R16W, Mahaska County, Iowa</i>
1090	Whittaker, William E.	<i>Phase IA Archaeological Investigation of the Proposed Black Hawk Marsh Shallow Water Excavations Project, Section 16, T86N-R36W, Sac County, Iowa</i>
1091	Hawkins, Alan J.	<i>Phase IA Archaeological Reconnaissance of the Proposed Kellerton Wildlife Area Sediment Pond Project, Section 16, T68N-R28W, Ringgold County, Iowa</i>
1092	Hawkins, Alan J.	<i>Phase I Intensive Archaeological Investigation of the Proposed Shimek State Forest Trail Project, Section 7, T67N-R7W, Lee County, Iowa</i>

Appendix F: OSA Reports, Fiscal Year 2019

Number	Author	Title
1093	Collins, Angela R.	<i>Phase I Intensive Archaeological Investigation of the Proposed Brown FSA Project, Section 20, T85N-R32W, Greene County, Iowa</i>
1094	Ingalls, Marlin R.	<i>Phase IA Architecture History Reconnaissance of a Proposed Antenna Project, James W. Grimes State Office Building, Des Moines, Polk County, Iowa</i>
1095	Hawkins, Alan J.	<i>Phase I Intensive Archaeological Investigation of the Proposed Millville Access Project, Section 9, T91N-R2W, Clayton County, Iowa</i>
1096	Davis, Warren D.	<i>Phase I Intensive Archaeological Investigation of the Proposed DNR Motor Mill Access Project, Section 5, T92N-R4W, Clayton County, Iowa</i>
1097	Horgen, Daniel G.	<i>Phase I Intensive Archaeological Investigation of the Proposed O'Neil Development Project, Section 21, T80N-R05W, Johnson County, Iowa</i>
1098	Mraz, Veronica	<i>Phase I Intensive Archaeological Investigation of the Proposed National Guard Athletic Field Project, Section 35, T80N-R25W, Polk County, Iowa</i>
1102	Whittaker, William E.	<i>Putting Native Americans Back on the Map: Iowa Historic Indian Location Database (HILD)</i>
1103	Kendall, Bryan S.	<i>Phase I Intensive Archaeological Investigation of the Proposed Wastewater Treatment Facility Improvement Project, Lake Mills, Sections 2, 3, 10 and 11, T99N-R23W, Winnebago County, Iowa</i>
1104	Mraz, Veronica	<i>Phase I Intensive Archaeological Investigation of the Proposed Ottumwa Water Works Lime Residual Process Improvements, City of Ottumwa, Wapello County, Iowa</i>
1105	Nansel, Blane H.	<i>FHWA No. 187320, Cultural Resources Evaluation, Ida County, Local Systems</i>
1106	Nansel, Blane H.	<i>BRS-SWAP-C94(121)--FF-94, Cultural Resources Evaluation, Webster County, Local Systems</i>
1107	Nansel, Blane H.	<i>BRS-SWAP-C94(122)--FF-94, Cultural Resources Evaluation, Webster County, Local Systems</i>
1108	Horgen, Daniel G.	<i>Phase I Intensive Archaeological Investigation of the Proposed CC-SSR-011 Conkling IEDA-CDBG Project, Section 34, T80N-R09W, Iowa County, Iowa</i>
1109	Horgen, Daniel G.	<i>Phase I Intensive Archaeological Investigation of the Proposed CC-SSR-012 Conkling IEDA-CDBG Project, Section 35, T80N-R09W, Iowa County, Iowa</i>
1110	Anderson, Mark L.	<i>Phase I Intensive Archaeological Investigation of the Proposed Northern Natural Gas IAB 55201 Plainfield BL MP 5.99 HDD Pipeline Project, Section 30, T93N-R14W, Bremer County, Iowa</i>
1113	Nansel, Blane H.	<i>BROS-SWAP-C091(128)--SE-91, Cultural Resources Evaluation, Warren County, Local Systems</i>
1114	Nansel, Blane H.	<i>LB-140304, Cultural Resources Evaluation, Plymouth County, Local Systems</i>
1115	Nansel, Blane H.	<i>LC-272701, Cultural Resources Evaluation, Plymouth County, Local Systems</i>
1116	Nansel, Blane H.	<i>LC=373609, Cultural Resources Evaluation, Plymouth County, Local Systems</i>
1117	Nansel, Blane H.	<i>LC-141303, Cultural Resources Evaluation, Plymouth County, Local Systems</i>
1118	Nansel, Blane H.	<i>LC-270510, Cultural Resources Evaluation, Plymouth County, Local Systems</i>
1119	Nansel, Blane H.	<i>BHOS-SWAP-Co470)--FB-47</i>
1120	Whittaker, William E.	<i>Letter Report: Cultural Resources Desktop Evaluation, Pitlick Subdivision Project, Johnson County</i>
1121	Whittaker, William E.	<i>Letter Report: Phase IA Summary Report and Phase I Survey Cost Proposal—West Lake Park Restoration, Scott County</i>