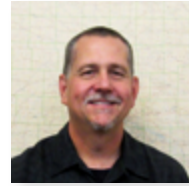


# Office of the State Archaeologist

## *Fiscal Year 2016 Annual Report*



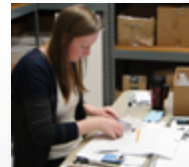
### The Year in Review

OSA mission statement, academic activities, staff achievements, annual work plan accomplishments, and plans and prospects for FY 2017.

198

### By the Numbers

An overview of FY 2016 through numbers and charts.



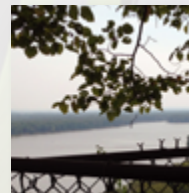
### Student Success

Twenty-three undergraduate and five graduate students were involved in various OSA archaeological and related research and repository activities over the course of the fiscal year.



### Research

The OSA conducts a wide range of research activities to discover the archaeological and architectural history of Iowa and surrounding midcontinent over the last 13,000 years.



### Bioarchaeology

In FY 2016 the OSA Bioarchaeology Program's efforts have focused on fulfilling its responsibilities towards the Native American Graves Protection and Repatriation Act as well as engaging in public education and outreach events.



### Education & Outreach

The OSA provides resources and opportunities that encourage the understanding, appreciation, and stewardship of Iowa's archaeological past.

# The Year in Review



John F. Doershuk, State Archaeologist and Director of the University of Iowa Office of the State Archaeologist



## OSA Mission

The position of State Archaeologist was established in 1959. [Read the entire mission statement.](#)

Read more about:

[Advisory Committee](#)

[Indian Advisory Council](#)



## Academic Activities

OSA staff instructed two UI classes during FY 2016 and led a class project for the UI Mobile Museum.



## Staff Achievements

One book chapter publication, a Mary Jo Small Fellowship Award, and an OSA Report publication were among OSA staff efforts.



## FY 2016 Annual Work Plan Accomplishments

In FY 2016 the OSA continued energetically pursuing research, education and outreach, and service activities throughout Iowa, the surrounding region, and internationally.



## FY 2017 Plans and Prospects

For FY 2017 the OSA has established 20 specific objectives.



## Nuts and Bolts for FY 2016

Organization chart; financial details; strategic plan 2010–2016; and listings of OSA's public presentations, papers presented at professional meetings, publications, service, and technical reports.

[Return to Table of Contents](#)



## Academic Activities



**Lara Noldner**  
OSA Bioarchaeology Director  
Instructor

### First-Year Seminar: A Tour of Biological Anthropology

Students explore the diverse field of biological anthropology and learn about many of the ways that knowledge of human biology can inform us about how people have evolved, migrated, and adapted to the many regions of the world we now inhabit.

Fall 2015

18 students



**John F. Doershuk**  
State Archaeologist  
Instructor

### Field Archaeology

Iowa Lakeside Laboratory

The 2016 Lakeside Laboratory archaeological field school continued on-going research efforts in the Iowa Great Lakes region including excavations at a Woodland-era site (13DK96) within the Kettleston-Hogsback Wildlife Management Area adjacent to Spirit Lake.

Summer 2016

8 students



**Elizabeth Reetz**  
OSA Education & Outreach Director  
Project Coordinator

### Society and Educational Applications of Chemical Concepts (Leslie Flynn, Instructor)

UI class project with Flynn's College of Education students who worked with industry partners to develop an exhibit-based curricula for the Mobile Museum's exhibit *Hawkeye Power: Clean Energy for Iowans*.

Spring 2016

5 students

## Brown Bags

Brown Bag at the OSA is a regular series through which OSA staff and guests share their research over the lunch hour. Topics include individual areas of interest, work in the field, and recent developments in archaeology and architectural history throughout Iowa and the Midwest. Presentations are free and open to the public and are held in OSA's main laboratory. Attendees are encouraged to engage in discussion and exchange following the presentation.

Date of Presentation	Presenter	Association	Title	In Attendance
10/2/2015	Bill Witzelaker	UI	The Archaeology of Iowa City	40
10/9/2015	Kyle Harvey	UI	Coroners in the Red Wing Locality: Analysis of the Slaughter Site (21G003) Assemblage	33
11/13/2015	Michelle Warehold	Iowa Floodplain Mapping Project, Iowa Flood Center, and the Midwest Hydroscience and Engineering Center	The Changing Role of the South-Central California: An Introduction and Discussion of the Archaeological and Environmental Context	26
1/29/2016	James R. McGrath, Luke Smith, and James G. Enloe	UI	Updates on Archaeological Analysis from the Whipple/Cave Farm School beneath the City Beautiful: The Archaeology of Des Moines	42
2/12/2016	Bill Witzelaker	UI	The Archaeology of Des Moines	22
3/25/2016	Brett Corneils, Jan Peters, and Heather Zehn	Washington County Sheriff's Department, Samaritan Detection Dogs and Washington County Community Schools	Using Detection Dogs for the Identification of Human Burial Sites	38

Click to enlarge and view list of Brown Bag presentations

[Return to The Year in Review](#)

[Return to Table of Contents](#)

## Staff Achievements

### Book Chapter Contribution

#### Central Plains Tradition Smoking Pipes in the Glenwood Locality of Iowa: Within a Landscape of the Rising and Falling Sky

John Hedden contributed a chapter to *Perspectives on the Archaeology of Pipes, Tobacco and other Smoke Plants in the Ancient Americas* focusing on Central Plains tradition use of pipes. The publication summarizes the common types of smoking pipes recovered from the Glenwood locality and looks at the small sample of effigy pipe styles and those displaying specific iconographic decorations. An assessment of a possible prehistoric ritual landscape for the Glenwood locality is attempted based on the presence of pipe styles as well as decorative motifs associated with Mississippian groups to the southeast.



### Awards

#### Mary Jo Small Staff Fellowship Award

Elizabeth Reetz received this award to attend the 81st Annual Meeting of the Society for American Archaeology (SAA) Conference in Orlando, Florida, where **Elizabeth co-presented a poster with Ho-Chunk Tribal Historic Preservation Officer Bill Quackenbush** in a session sponsored by the Indigenous Populations Interest Group titled: Creating Collaborative Learning Opportunities for Indigenous Youth with Archaeology-based Environmental Education. Elizabeth also attended annual business meetings for Project Archaeology and the SAA's Public Archaeology and Indigenous Populations interest groups, as well as chaired meetings for the Public Education Committee and their network of state coordinators.



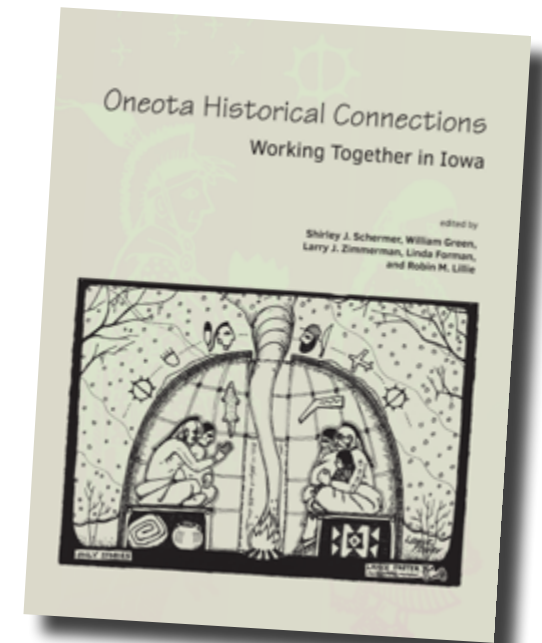
[Click here to view the poster presentation.](#)



### OSA Report Publication

#### Oneota Historical Connections: Working Together in Iowa

This volume is the outcome of a conference held in 1997 at UI focusing on Oneota historical connections and the archaeological history of the Chiwere-speaking Iowa and Otoe peoples. The conference attracted over 70 participants from seven states and the District of Columbia including members of the Chiwere-speaking tribes, ethnohistorians, linguists, osteologists, and archaeologists. [Click here to read more or purchase a PDF of the publication.](#)



[Return to The Year in Review](#)

[Return to Table of Contents](#)



## FY 2016 Annual Work Plan Accomplishments

In FY 2016 the OSA continued energetically pursuing research, education and outreach, and service activities throughout Iowa, the surrounding region, and internationally. In the process, the OSA will continue engaging with a wide variety of publics in and outside of Iowa.

For FY 2016 the OSA has established 18 specific objectives which reflect goals identified in OSA's Strategic Plan: 2010–2016 ([see Appendix A](#)). These objectives are designed to focus OSA staff energy toward contributing to UI's efforts to be a leading public research university while cost-efficiently maximizing the development, dissemination, and preservation of knowledge of Iowa's human past. The specific objectives are:

1. Offer a fall 2015 First-year Seminar section entitled Bioarchaeology which engages participating students in current research at the OSA and Department of Anthropology. **Successful**
2. Reorganize the OSA research activities to adjust to the departure of Melody Pope for a position at Indiana University. **Successful**
3. Utilize OSA resources to offer undergraduate and graduate students research and employment opportunities including as volunteers, work-study students, research assistants, and interns, and mentor graduate students in Anthropology—especially those working on a Master's degree specialization in Cultural Resource Management archaeology. **Successful**
4. Complete publication and distribution (electronic and limited print) of OSA Report 24: *Ooneota Historical Connections: Working Together in Iowa*. **Successful**
5. Continue consultation and direct testimony activities for the Dakota Access Pipeline Project with the Iowa Utility Board, State Historic Preservation Office, Rock Island District Corps of Engineers, Sierra Club, and tribal partners to insure the greatest possible adherence by this large-scale project with the Association of Iowa Archaeologists *Guidelines for Archaeological Investigations in Iowa*. **On-going**
6. Initiate development of the OSA 2016–2022 Strategic Plan in coordination with UI Strategic Plan updates. **On-going**
7. Continue to extend the impact of the OSA's various social media efforts, such as Facebook, Twitter, Tumblr, and Instagram, to further increase the number of followers and timely dissemination of information on Iowa archaeology topics. **Successful**
8. Continue to conduct high quality archaeological, architectural history, and osteological research for regional, national, and international grant and contract-funded sponsors as staff expertise and opportunity permits. **Successful**
9. Complete OSA team obligations for the Cultural Landscape Report on Effigy Mounds National Monument, Allamakee, and Clayton Counties, Iowa in collaboration with Quinn Evans Associates, tribal partners, and the National Park Service. **Successful**
10. Coordinate with Iowa State University, the State Historic Preservation Office, UI administration, and the United States Army Corps of Engineers concerning long-term planning for archaeological curation. **On-going**
11. Collaborate with the UI Pentacrest Museums and other campus partners in developing the calendar year 2016 edition of the UI *Dare to Discover* Mobile Museum. **Successful**
12. Continue to provide high quality statewide osteological services to the State Medical Examiner's Office and law enforcement personnel as needed. **Successful**
13. Complete lab, reporting, and public dissemination activities for materials stemming from FEMA-funded flood recovery archaeological excavations at the new UI Voxman School of Music construction location. **Successful**
14. Complete the reporting and educational outreach products associated with the funded SAFETEA-LU (Safe, Accountable, Flexible, Efficient Transportation Equity Act) Transportation Enhancement Grant Program award *Bringing the Glenwood Culture to Iowans: Research, Publication, and Engagement on Archaeological Sites Excavated by The Iowa Department of Transportation*. **On-going**
15. Complete the funded Statewide Transportation Alternatives Program project: *Documenting Iowa's Pre-Settlement Roads and Trails* and extend planning for a web-based *Ancient Trails of Iowa* heritage tourism project that combines the best of Iowa statewide tourism linked to historical architecture, landscapes, and archaeological sites. **On-going**
16. Submit for publication at least 10 journal articles and book chapters, including to peer-reviewed journals, and continue contributions to newsletters, online websites and wikis to improve the dissemination of information about the significance and value of Iowa's past. **Successful**
17. Offer a summer 2016 course, *Field Archaeology*, through the Iowa Lakeside Laboratory Regents Resource Center. **Successful**
18. Complete OSA team obligations for the Master Planning Process associated with the Blood Run National Historic Landmark (13LO2), Lyon County, Iowa, in collaboration with Quinn Evans Associates, the Iowa Department of Natural Resources, and other tribal, state, and local partners. **Successful**

[Return to The Year in Review](#)

[Return to Table of Contents](#)

## FY 2017 Plans and Prospects

In FY 2017 the OSA will continue energetically pursuing research, education and outreach, and service activities throughout Iowa, the surrounding region, and internationally. In the process, the OSA will continue engaging with a wide variety of publics in and outside of Iowa. The OSA has established 20 specific objectives for FY 2017 which reflect goals identified in OSA's Strategic Plan: 2010–2016 ([see Appendix A](#)). These objectives are designed to focus OSA staff energy toward contributing to UI's efforts to be a leading public research university while cost-efficiently maximizing the development, dissemination, and preservation of knowledge of Iowa's human past. The specific objectives are:

1. Teach a fall 2016 First-year Seminar section on Biological Anthropology which engages participating incoming students at UI in current research at the OSA and the Department of Anthropology.
2. Develop OSA's capacity to conduct drone-based research including drone and associated camera and remote sensing equipment purchase, licensing, and software use.
3. Arrange for Iowa Center for Research by Undergraduates academic year funding packages to support two students working on research projects at OSA utilizing materials from 1) Iowa Lakeside Laboratory investigations at 13DK96 and 2) the mammoth remains recovered via a UI Internal Funding Initiative major project grant from the eroding shoreline of Lake Red Rock, Marion County, Iowa.
4. Utilize OSA resources to offer undergraduate and graduate students research and employment opportunities including as volunteers, work-study students, research assistants, and interns, and mentor graduate students in Anthropology—especially those working on a Master's degree specialization in Cultural Resource Management archaeology or Midwest/Plains research topics.

5. Complete publication and distribution (electronic and limited print) of OSA Report 25 on the Wall Ridge Site (13ML176) and OSA Report 23 on the Palace Site (13PK966).
6. Teach the fall 2016 Osteology course on behalf of the UI Department of Anthropology.
7. Develop the OSA 2016–2021 Strategic Plan in coordination with UI Strategic Plan updates.
8. Continue to extend the impact of the OSA's various social media efforts, such as Facebook, Twitter, Tumblr, and Instagram, to further increase the number of followers and timely dissemination of information on Iowa archaeology topics.
9. Continue to conduct high quality archaeological, architectural history, and osteological research for regional, national, and international grant and contract-funded sponsors as staff expertise and opportunity permits.
10. Complete lab, reporting, and public dissemination activities for materials stemming from the Danish Brotherhood Hall Site (13ST323) archaeological excavations.
11. Participate in the development of the UI Geospatial Consortium and assist with hosting a delegation from India visiting spring 2017 to learn more about collaborative research opportunities with UI faculty, staff, and students.
12. Collaborate with the UI Pentacrest Museums and other campus partners in developing the calendar year 2017 edition of the UI "Dare to Discover" Mobile Museum including a major exhibit on the Oneota archaeological culture of Iowa.
13. Continue to provide high quality statewide osteological services to the State Medical Examiner's Office and law enforcement personnel as needed.
14. Complete field and initiate lab, reporting, and public dissemination activities for materials stemming from the Dixon Oneota Site Iowa

Department of Transportation-funded Highway 31 erosion protection archaeological excavations.

15. Complete OSA Report 26 and associated educational products funded through the SAFETEA-LU (Safe, Accountable, Flexible, Efficient Transportation Equity Act) Transportation Enhancement Grant Program award *Bringing the Glenwood Culture to Iowans: Research, Publication, and Engagement on Archaeological Sites Excavated by the Iowa Department of Transportation*.
16. Complete the funded Statewide Transportation Alternatives Program project: *Documenting Iowa's Pre-Settlement Roads and Trails* and extend planning for a web-based *Ancient Trails of Iowa* heritage tourism project that combines the best of Iowa statewide tourism linked to historical architecture, landscapes, and archaeological sites.
17. Submit for publication at least 10 articles, reports, and book chapters, including to peer-reviewed journals, and continue contributions to newsletters, online websites, and wikis to improve the dissemination of information about the significance and value of Iowa's past.
18. Teach a summer 2017 course, *Field Archaeology* through the Iowa Lakeside Laboratory Regents Resource Center.
19. Complete the transition of the I-Sites Portal from the Iowa Department of Transportation to UI and develop additional layers and full mobile capacity for in-field use.
20. Initiate strategic initiatives to develop OSA's fund-raising capacity in support of education and research activities statewide.

[Return to The Year in Review](#)

[Return to Table of Contents](#)





# By the Numbers

56

years the OSA has served Iowa and midwest region as a UI research center

198

archaeological sites have been newly recorded during the fiscal year

1,912,317

US dollars OSA collected from sponsored grants and contracts

less than 1

% is how much gifts and endowments contributed to the OSA budget

~15,000

people engaged through OSA and archaeology events

63

staff members worked at OSA during FY 2016

3000+

volunteer and student hours contributed to OSA projects

87

collections were newly accessioned during the fiscal year

[Return to Table of Contents](#)



# Student Success



In addition to actively meeting its Iowa Code statutory responsibilities, which include managing archaeological site location and related geospatial data, serving as the State Archaeological Repository, and providing protection for Iowa's ancient human remains, the OSA vigorously supports the UI academic mission. Various OSA staff, as adjunct faculty in the UI Department of Anthropology, offer courses in anthropology and archaeology, mentor honor students and student interns, and serve on Ph.D. and M.A. degree committees. The OSA actively supports undergraduate and graduate student use of its archaeological, osteological, and comparative collections; scholarly documents; electronic databases; scientific instrumentation; and laboratory space for degree-related research. These resources contribute to the educational experience of students in diverse UI departments including American Studies, Anthropology, Art & Art History, Biology, Classics, Dentistry, Earth and Environmental Sciences, Geographical and Sustainability Sciences, and History along with the programs of American Indian and Native Studies, the Informatics Initiative, and Museum Studies.

The OSA also regularly hosts visits from UI classes, provides guest lectures in Anthropology and other departments, offers courses in its laboratory-multimedia facility, employs work-study students majoring in a wide variety of disciplines, and supports career-building volunteer research opportunities for students.

The OSA facilities, collections, and staff provided classroom enrichment and workplace experience for students. Eighteen undergraduate and five graduate students from the institutions listed below were involved in various OSA archaeological and related research and repository activities over the course of the fiscal year. These included six students employed in a work-study capacity. Many of these students used OSA resources to complete degree requirements along with assisting OSA-sponsored research as volunteers to expand their skills. A total of 19 students and 4 members of the public volunteered for 2,457 hours helping with OSA projects in the field and lab.

[View a full list of volunteers and students](#)



## *Participating Institutions*

University of Iowa  
University of Northern Iowa  
Pennsylvania State University  
New York University  
St. Cloud State University  
Cornell College  
Oberlin College  
Grinnell College

[Return to Table of Contents](#)



# Research



## Archaeological and Architectural Investigations

The OSA conducts both contract and grant-funded research involving archaeological and architectural history studies statewide.



## Collections

The OSA continually adds archaeological materials and related documents to the State Archaeological Repository and provides materials for local, regional, and national exhibit and research purposes.



## Technology

Conducting and disseminating modern high-quality archaeological research requires a major investment in research technology. The OSA's involvement in such technology covers the gamut of twenty-first century breakthroughs in archaeology.

[Return to Table of Contents](#)





# esCitizen

KINS



Volunteers like Beth Jeff, of Iowa Falls, have spent time in recent days cataloging artifacts from the massive Jeff Ulich collection, which is being gifted to the Calkins Nature Area museum in Iowa Falls.

PHOTOS BY COREY MEINTS / TIMES C

## Cataloging History

### Collection finds home at Calkins Nature Area

COREY MEINTS  
meints@afails.com

The new portion of the Calkins Nature Area Museum in Iowa Falls will be full for a while. Tables covered in Native American artifacts and evidence of Iowa's ancient history are being cataloged by volunteers and staff from the Office of the State Archaeologist. Once cataloged, they'll be entered into a database, making them exhibit-ready.

This collection is like others in many ways, but what sets it apart is the exhaustive work of its founder.

Project Archaeologist Michael Perry said the collection — which was gifted to Calkins Nature Area by Iowa Falls resident Jeff Ulich — covers almost the entirety of Iowa's history.

"I've seen plenty of collections that contain a lot of the things you see here that span the time frame of prehistory here in Iowa," Perry said. "His collection isn't unique in that regard, but there aren't many that are this well organized and having



Larry Boyer uses a brush to put a label on a stone artifact from the Jeff Ulich collection. Once the items are cataloged, they'll be displayed at the Calkins museum.

The Ulich Collection will be many total pieces. Probably

## Archaeological and Architectural Investigations

The OSA conducts both contract and grant-funded research involving archaeological and architectural history studies statewide. These projects, regardless of funding source or sponsor, generate important new knowledge on Midwestern prehistory and history, and they form the basis for many staff publications, professional and public presentations, and student and faculty research projects.



### *pXRF Analysis Technique*

A portable Olympus x-ray fluorescence unit (pXRF) owned by the UI Department of Anthropology was used to analyze several different assemblages of both comparative lithic materials and artifacts recovered from archaeological sites.



### *School of Music Site*

Analysis of the UI School of Music archaeological site excavations was completed in 2015 followed by the technical report in the spring of 2016. An exhibit featuring artifacts and site information will unveil with the opening of the new Voxman School of Music building in October 2016.



### *Infrastructure Surveys*

The OSA helped the creation and development of infrastructure throughout Iowa by completing 144 investigations and evaluations during FY 2016. OSA staff surveyed proposed roads, highways, sewer lines, urban development areas, cell towers, dams, parks, wastewater plants, coal mine reclamations, and quarries.



### *Large-Scale Archaeological Contexts*

The OSA partnered with other agencies in Iowa to produce several large-scale archaeological contexts for significant historical areas.

**Mormon Trails**

**Ancient Trails**

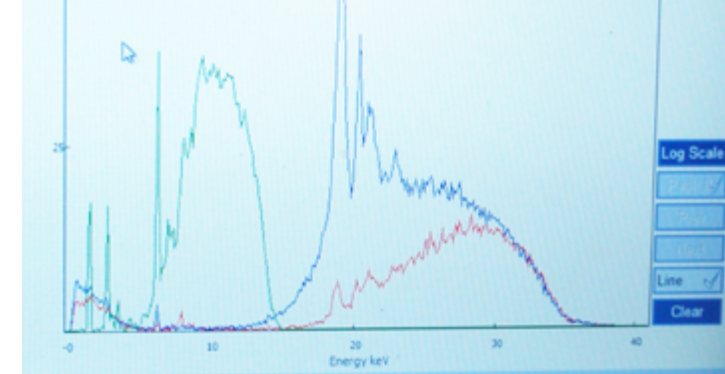
**Des Moines River Water Trails**

**Fort Dodge Clay Works Excavation**

**Calkins Nature Center and the Ulich Collection Curation**

[Return to Research](#)

[Return to Table of Contents](#)



### *Application of pXRF for the Differentiation of Lithic Raw Material Types in Iowa*

A research project was initiated during FY 2016 to look at the efficacy of using a **portable x-ray fluorescence (pXRF)** as a method to differentiate knappable lithic material and the artifacts produced from them. Many types of chert and other knappable lithic materials are indistinguishable from one another at the macroscopic level so other methods are needed in defining these differences. X-ray fluorescence units typically use three beams of differing energy levels to produce an elemental signature of a rock's chemical content. An Olympus pXRF owned by the UI Department of Anthropology was used to analyze several different assemblages of both comparative lithic materials and artifacts recovered from archaeological sites. This is an area of growing interest to the archaeological community as a fast, inexpensive, and nondestructive method of analyzing lithic material for exploring a variety of anthropological research questions.



Our largest pXRF test to date includes a 629-piece assemblage composed of 302 comparative samples of knappable lithic material from Iowa, Wisconsin, and Minnesota, and 327 artifacts and debitage from archaeological sites in Monroe County, Wisconsin. This research concentrated on the geologic

systems that produce the locally available lithic materials most often used by prehistoric peoples of the area. We are interested in seeing if pXRF can differentiate chert between geologic systems, between the geologic systems from the three states, and what could be said about the lithic materials recovered from the archaeological sites. Results indicate that the pXRF shows separation of lithic types from the four geologic systems included in the study. The study also indicated a clearly discernible separation in silicified sandstone sources accessed by prehistoric peoples in southwest Wisconsin. The archaeological sites assemblages also showed rather tight clustering of raw material types indicating preferential selection of lithic resources by the prehistoric inhabitants.

These studies suggest that the application of pXRF should provide the ability to further discriminate between macroscopically identical lithic types that otherwise could not be separated without costly laboratory processes. We intend to continue this research with the application of pXRF to the over 600 comparative sample assemblage housed at the OSA, creating an additional tool for the identification and differentiation of Iowa lithic raw materials.

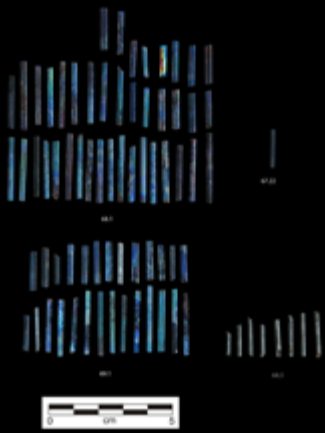
[Return to Investigations](#)

[Return to Research](#)

[Return to Table of Contents](#)







## School of Music Site

The final report for the UI School of Music archaeological site, located underneath the newly constructed UI Voxman School of Music, was completed in the spring of 2016. Analysis of the four features (two privies, one small structure foundation, and a refuse-filled stone well) help to illuminate elements of Iowa City history up to the early twentieth century.

Archaeological evidence indicates a small structure was likely present at the site at the time Iowa City was founded in 1839. A small cache of trade beads found tucked within its foundations suggest the owner or builder of the structure interacted with Meskwaki Indians living south of Iowa City.

A small privy (outhouse) located next to the structure started as a buried barrel. It was used to contain waste and refuse as early as the 1830s. Medicine bottles, broken ceramics, pipe stems, and small items such as buttons and coins, were often lost or discarded in privies.

Another privy was constructed and used during the 1870s when a prominent and relatively affluent family lived at a larger house built on the lot. Artifacts such as English China and dining goblets are indicators of the family's wealth. Interestingly, this privy also contained several dozens of complete and broken lamp chimney glass, which marks a change in urban utilities from oil to gas lighting.

The limestone well contained everyday debris from early twentieth-century households including their dishes, toiletries, cooking wear, and toys. Rolled up amid furnace refuse was a burned corset. The long length of the stays correspond to a style of corset popular in the 1910s that constricted a woman's waist and hips in attempt to achieve a pencil-thin body profile. The burned corset echoes the growing dissatisfaction with the lack of women's rights prior to the passage of the 19th Amendment to the U. S. Constitution in 1919.

[View School of Music interactive PDFs](#)

[Return to Investigations](#)

[Return to Research](#)

[Return to Table of Contents](#)







### *Infrastructure Surveys*

The OSA conducted 144 archaeological and architectural projects in FY 2016, significantly contributing to the enhancement of statewide economic development.

### **Iowa Department of Transportation**

FY 2016 marks 46 years of contracted services with the Iowa DOT for archaeological investigations and 27 years of historic architectural evaluations.

Cultural resource investigations were reported in 10 Phase I survey Technical Reports for Primary Roads projects. Fifty-three Phase IA Cultural Resource Evaluation reports were submitted. A



wide variety of project types during the 2015–2016 period received archaeological surveys including bridge replacements, an interstate interchange redesign, a stream mitigation, and a land sale, as well as the geophysical survey of a pioneer cemetery situated within a highway right-of-way. Historic architectural surveys were completed for buildings within the interstate interchange area along with an evaluation of a resurfacing project on a historic road that is eligible for the National Register of Historic Places.

### **Rand Park Architectural Survey**

An historic architectural reconnaissance survey was conducted at Rand Park in the city of Keokuk. This park includes several standing structures of historical note including Chief Keokuk Memorial Gravesite and the Flower Garden Water Fountain.

### **Geophysical Survey of Pioneer Cemetery in Harrison County**

Geophysical investigations were conducted at archaeological site 13HR180, also known as the historical Hawkins pioneer cemetery, located adjacent to Iowa 44 in Harrison County. The cemetery was recorded as an archaeological site by Iowa DOT personnel surveying a nearby project. Although 13HR180 would not be affected by that Iowa DOT project, the site was recommended to be included in the Statewide Historical Sites Management Plan. A non-destructive, non-invasive geophysical survey was conducted at the site area, utilizing a magnetometer (fluxgate gradiometer) and ground penetrating radar, to determine the presence of potential interments and more accurately define the cemetery boundaries. The original recorded cemetery boundaries were based on a small picket fence surrounding two dressed limestone headstones of the Uriah Hawkins family. The results of the geophysical investigations concluded that at least 10 to as many as 100 additional interments are located outside the small fenced cemetery, and as many as 26 possible interments are located within the Iowa 44 right-of-way.



[Return to Investigations](#)

[Return to Research](#)

[Return to Table of Contents](#)



# MORMON TRAILS

## across IOWA

The westward movement of the Mormons is one of the greatest overland Euroamerican emigrations in American history, and has both state and national significance. The entirety of the emigration routes across the Great Plains and Rocky Mountains is designated as a National Historic Trail. Between 1846 and 1869, over 70,000 members of the Church of Jesus Christ of Latter-day Saints, also called Mormons, made their way west to the Great Salt Lake where they established a permanent home.

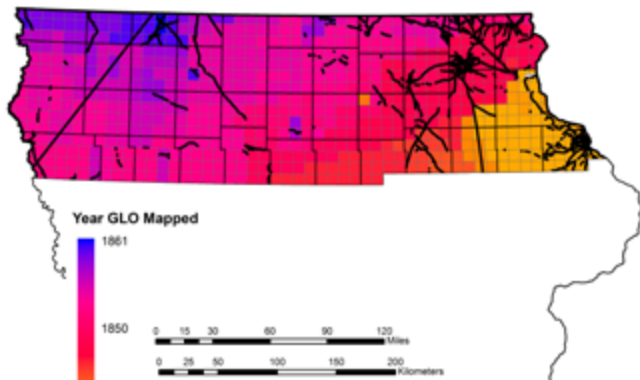
### Large-Scale Archaeological Contexts

#### Mormon Trails

Between 1846 and 1869, over 70,000 members of the Church of Jesus Christ of Latter-day Saints, also called Mormons, made their way across Iowa, westward bound for the Great Salt Lake. A joint project between the OSA, EarthView Environmental, and Tallgrass Historians L.C. documented the history of this journey and identified specific sites important to the Mormon trek. [View the poster here](#)

#### Ancient Trails

Between 1833 and 1861, the General Land Office (GLO) mapped nearly 11,000 km of trails in Iowa. Almost all of Iowa's existing roadways were built after 1850; the familiar 1-mile grid of checkerboard township roads crossed by state and federal highways emerged after the state was surveyed by the GLO in the years 1833–1861. The OSA is undertaking a multi-year project to document the history of trails in Iowa and



determine what is left of the GLO-mapped trail system of a large portion of Iowa. This project targets the northern four tiers of Iowa counties; these 42 counties represent about 40 percent of Iowa's area.

#### Des Moines River Water Trail

As a continuation of a statewide effort to establish recreational water trails, the OSA worked with the Iowa Department of Natural Resources to evaluate the archaeological and historical contexts of access points and improvements to the Des Moines River through the greater City of Des Moines region, including parts of Boone, Dallas, Jasper, Marion, Polk, Story, and Warren counties, Iowa.

#### Fort Dodge Clay Works Excavation

OSA excavation of the Fort Dodge Clay Works revealed expansive brick foundation arches and kiln fireplace features, all buried in place and associated with an intact buried A horizon. Comparisons with contemporaneous brick



manufacturing technologies reveal the Fort Dodge Clay Works utilized innovative industrial automation processes, including an enormous continuous-fire kiln system producing 90,000 bricks a day.

#### Calkins Nature Center and the Ulch Collection Curation

A prolific artifact collector, Jeff Ulch, donated his well-documented collection of tens of thousands of artifacts and natural history specimens to Hardin County's Calkins Nature Center. The collection has been recognized as an important source of interpretive data for the central Iowa region, containing Paleozoic-age fossils, Pleistocene and Holocene faunal remains, and artifacts spanning Iowa's 13,000-year prehistoric period. The OSA led efforts to inventory and catalog this priceless collection.

[Return to Investigations](#)

[Return to Research](#)

[Return to Table of Contents](#)





## Research Collections

The OSA continually adds archaeological materials and related documents to the State Archaeological Repository and provides materials for local, regional, and national exhibit and research purposes. The OSA pursues grants in support of efforts to insure the long-term care for the collections and in FY 2016 submitted a grant application to the State Historical Society Historic Resource Development grant program to preserve over 400,000 documents pertaining to Iowa's archaeological sites through digitization and microfilm production.

### Research Loan

Adjunct researcher at the OSA Joseph Tiffany borrowed the collection from the Carr site, 13MR31, a collection within the Charles R. Keyes Collection. It was collected by F. S. Smith of Nevada, Iowa, 100 years ago. The collection has never received a complete professional examination. Tiffany will report his analysis in an upcoming article in the *Journal of the Iowa Archeological Society*.



**87** collections accessioned this fiscal year

**17** collections loaned this fiscal year

**261,706** total document records,

**90** percent available digitally

### Collaboration with Cornell College, Mount Vernon, Iowa

Cornell College Chemistry Professor Cynthia Strong and chemistry student Lizzy Davidson conducted X-ray fluorescence analysis on 100 ceramic rim sherds from six late prehistoric Mill Creek village sites. The collections are reposed at the OSA. The purpose was to determine ceramic paste similarities among these sites by measuring traces of twelve different elements.

[Return to Research](#)

[Return to Table of Contents](#)



A

B

C



D



E



## Research Technology

OSA's commitment to conducting and disseminating modern high-quality archaeological research requires a major investment in research technology. From maintaining complex databases, to deploying a suite of scientific instruments and equipment, to supporting an array of Internet and other social media, the OSA's involvement in research technology covers the gamut of twenty-first century breakthroughs in archaeology. In FY 2016 the OSA initiated steps to transfer hosting and management of I-SitesPro from the Iowa Department of Transportation (Iowa DOT) to UI.

### *Fiscal Year 2016 Numbers*

**198** newly recorded sites

**28,924** total sites recorded in Iowa

**250** data searches

**258** registered I-SitePro users

**\$70,118** in research technology fees



### *Iowa Site File*

Most archaeological sites are recorded in the Iowa Site File as a result of cultural resource surveys conducted by professional archaeologists. Some, however, are reported by landowners, avocational archaeologists, and other non-professionals.



### *Field and Laboratory Technology*

Many of OSA's research endeavors require the use of highly specialized scientific technology in both the field and laboratory setting.



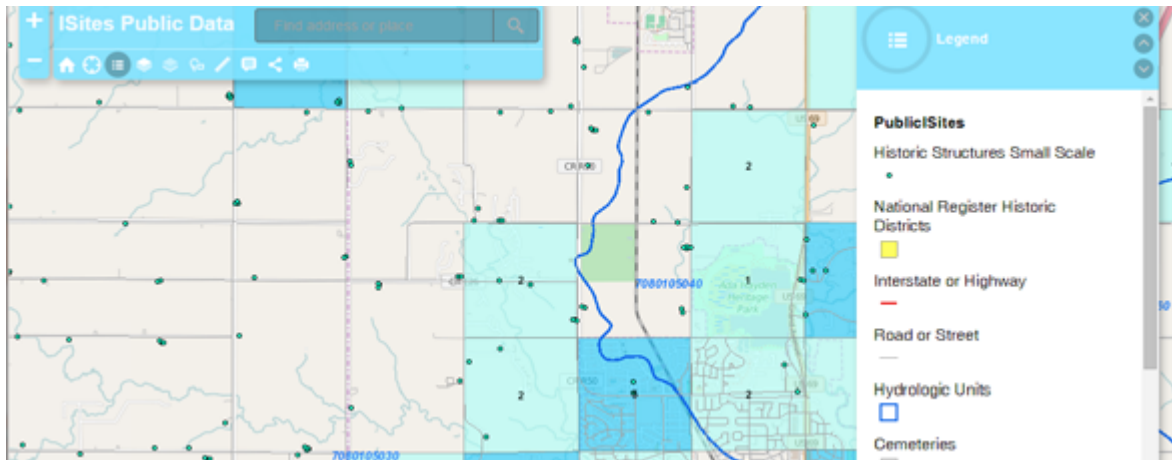
### *Website and App Development*

During FY 2016 the OSA developed web portals for **Paleocultural Research Group of Colorado** and the **Iowa Blood Run Cultural Landscape Master Plan**. The OSA continued its management of the Plains Anthropological Conference, the Midwest Archaeological Conference, I-SitesPro, I-Sites Public, I-SitesGov and BloodRunNHL portals. Underway is the I-Sites migration away from the Iowa DOT portal to its new home at UI.

[Return to Research](#)

[Return to Table of Contents](#)





## Iowa Site File

Most archaeological sites are recorded in the Iowa Site File (ISF) as a result of cultural resource surveys conducted by professional archaeologists. Some, however, are reported by landowners, avocational archaeologists, and other non-professionals.

Each archaeological site recorded in the ISF contains information in a relational database and their locations are stored in a geographic information system database. Revenue generated from site searches and I-SitesPro (see below) license fees help to offset program costs to maintain the system.

## I-SitesPublic Access

Information from the ISF is also provided on the World Wide Web. The I-SitesPublic Internet map server ([archaeology.uiowa.edu/i-sites](http://archaeology.uiowa.edu/i-sites)) provides users with access to maps of all 99 Iowa counties showing the locations of [Public Land Survey System](#) square-mile sections where archaeological sites have been recorded.

## I-SitesGov

I-SitesGov, intended for use by non-archaeologists, is a low-cost fee-based website with mobile applicability that provides quarter-section location of archaeological sites to aid in government, state, and local planning. To learn more about I-SitesGov and how to obtain a license, contact [the Site Records Manager](#) (319-384-0735).

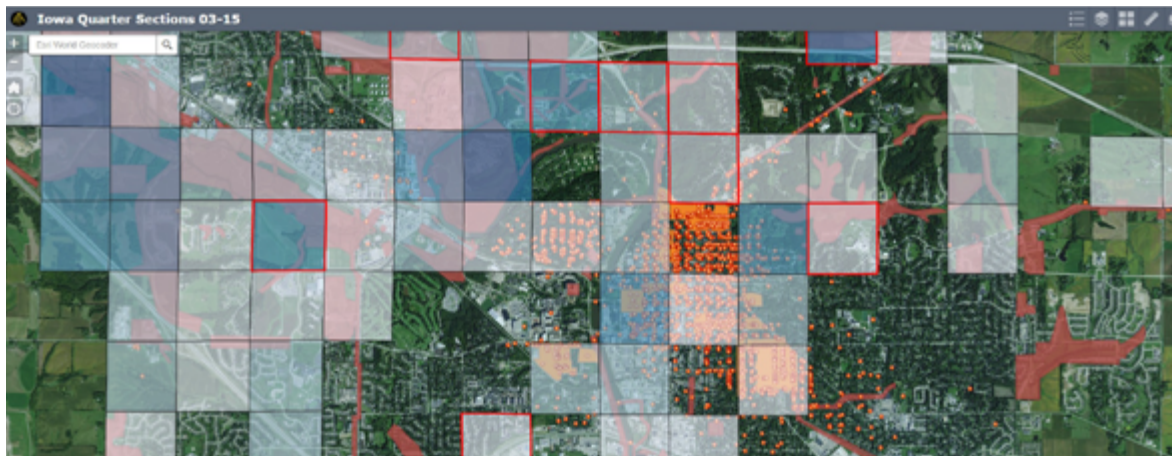
## I-SitesPro

This password-protected website ([www.iowaisites.com](http://www.iowaisites.com)) provides qualified professional archaeologists and their staff with access to more detailed data on archaeological sites and related information from OSA's archives. This level of access includes recorded archaeological site locations and previously archaeologically surveyed areas.

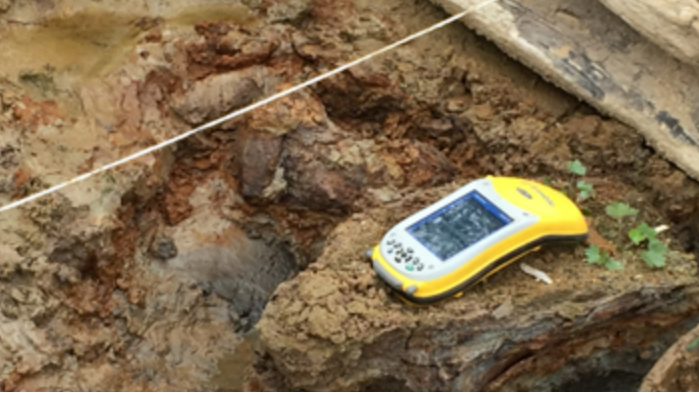
[Return to Research Technology](#)

[Return to Research](#)

[Return to Table of Contents](#)







### Field and Laboratory Technology

Many of OSA's research endeavors require the use of highly specialized scientific technology in both the field and lab. The following are examples of devices exploited in FY 2016 to assist a wide range of research activities.

#### Global Positioning System

The OSA uses a variety of global positioning system (GPS) units including the Trimble Juno SB with a locational accuracy of  $\pm 1.5$  meters and the recently acquired Spectra Precision Mobile Mapper 120 with an accuracy of  $\pm 0.5$  m. The Mobile Mapper 120 unit's data can be post-processed for an improved  $\pm 10$ -20 cm accuracy. Shown above is a Trimble GPS unit being used to map individual mammoth bones during field recovery at Lake Red Rock.



#### Total Station Theodolite

In 2000 the OSA obtained a Topcon GDS-211D total station—a precision electronic theodolite (transit) integrated with an electronic distance meter. Survey accuracies are on the order of  $\pm 1$  cm. Shown below is the total station being used to map at the Danish Brotherhood Hall archaeological site (lower left).

#### Research Microscopes

The Motic SMZ-168 (shown above) is particularly useful for 10X–40X scanning of light fraction flotation materials such as carbonized seeds as well as other low-power materials identifications.

OSA's Olympus BX51 (shown below in the analysis of an animal hair sample) is a top-notch high-powered materials research microscope well-suited to analyze archaeological specimens. The scope is equipped with an Olympus DP71 digital



camera, a Prior Scientific Optiscan II motorized microscope stage, and Olympus Stream Motion 1.9 data acquisition software.

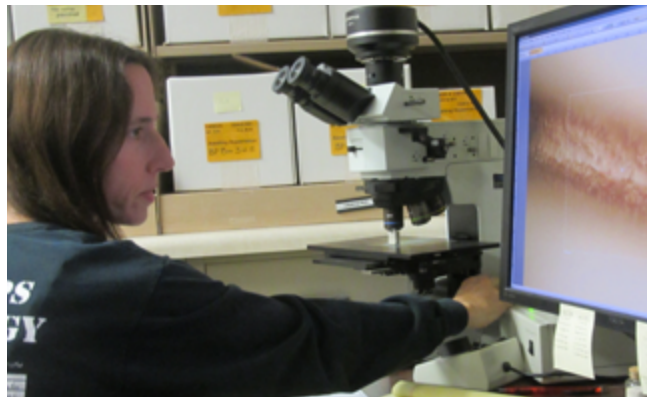
#### 3D Scanning and Printing

OSA's NextEngine 3D Laser Scanner uses multi-laser scanning technology to create a 3D surface models and 3D reproductions (image above). The Scan Studio HD Pro software produces a textured 3D model that is sent to UI Office of the Vice President for Research and Economic Development for 3D printing. This reproduction printing allows researchers access to a physical object when the original is too fragile or otherwise unavailable. The image below shows an original animal bone harpoon (top) and two 3D printed replicas.

[Return to Research Technology](#)

[Return to Research](#)

[Return to Table of Contents](#)



# Bioarchaeology

In FY 2016 the OSA Bioarchaeology Program's efforts have focused on fulfilling its responsibilities towards the [Native American Graves Protection and Repatriation Act \(NAGPRA\)](#). This involves submitting the required documentation, consulting with the appropriate tribes, and facilitating the repatriation and reburial of human remains and funerary objects. In July 2015 the OSA was awarded a Documentation and Consultation grant from National NAGPRA to complete documentation of its collections of human skeletal remains and funerary objects, and initiate procedures for notifying the proper Native American communities of NAGPRA items in the OSA's possession. Jennifer Mack and Brianna Hoffman were hired under the grant to perform human osteological analyses and prepare reports and inventories. Seven Notices of Inventory Completion have been published to date in the Federal Register and repatriations are underway to the Iowa Tribe of Kansas and Nebraska, the Omaha Tribe of Nebraska, the Ponca Tribe of Nebraska, and the Ho-Chunk Nation, as well as to a coalition of tribes from northern California.

Efforts are also underway for renewal of Iowa's official agreement with National NAGPRA, which provides for the reburial of culturally unidentifiable remains in one of the state's

cemeteries designated in the Iowa Code for this purpose.

Through its bioarchaeology initiative, the OSA continues to work closely with Native American tribes that trace their heritage to Iowa, with landowners who serve as site stewards, and with local, state, and federal agencies to see to the protection of ancient burial sites and human remains throughout the state. In addition to continuing work on projects from previous fiscal years, in FY 2016 65 new projects from 31 counties were recorded and 16 field investigations were conducted. Field investigations mainly involved monitoring known burial sites and documented four new burial sites. Four meetings were held with the [OSA's Indian Advisory Council](#) to keep members up to date on all human remains-related investigations and records; one meeting was held August 18, 2015, one on December 1, 2015, one on March 16, 2016, and another on June 8, 2016.

To promote stewardship of cemeteries and known burial sites and to promote awareness of state and federal legislation protecting ancient human remains, the OSA's bioarchaeology activities also engaged in public education and outreach events. Bioarchaeology staff gave five



Meskwaki, OSA, and Ho-Chunk representatives at an invited poster symposium *NAGPRA and Beyond: Successes and Shared Benefits of Collaboration* presented at the 81st Annual Society for American Archaeology Conference in 2016.

guest lectures. A guest lecture on NAGPRA and the Iowa burial laws was given to University of Montana graduate students via Skype, a guest lecture on the Iowa burial laws and guidelines for protecting historic cemeteries was given to the Iowa Land Improvement Contractors Association, and a lecture on bioarchaeology was given at the [Wickiup Hill Learning Center](#) in Linn County, Iowa. Guest lectures on the Dubuque Third Street Cemetery were given to the Northwest Chapter of the Iowa Archeological Society and a Science Teachers' Workshop at Loras College. First-year UI students were also introduced to Biological Anthropology and osteological analysis via a seminar.

[Return to Table of Contents](#)



# Education & Outreach

The OSA provides resources and opportunities that encourage the understanding, appreciation, and stewardship of Iowa's archaeological past. Events took place in 40 Iowa counties reaching **nearly 15,000 people**.

Community/Public Presentations	<b>646</b>
Special Interest/Private Lectures	<b>985</b>
K-12 Presentations/Tours	<b>1,193</b>
Higher Education Lectures/Workshops	<b>251</b>
Professional Conferences	<b>803</b>
Exhibit Booth or Outreach Tent	<b>2,926</b>
Mobile Museum	<b>8,179</b>
<b>Total</b>	<b>14,983</b>



## Exploring Iowa Archaeology in the K-12 Classroom

The OSA develops and presents a variety of activities for K-12 audiences that are interdisciplinary, inquiry-based, hands-on, and based on current classroom content and teacher needs. OSA's success keeps it busy collaborating with archaeology education leaders across the nation.



## Bringing Archaeology to Iowa Communities

Iowa Archaeology on the Road, International Archaeology Day, and the Meskwaki Powwow are just a few of the events and programs that engaged thousands of Iowans this past year.



## UI Mobile Museum

The OSA is part of a collaborative team with the Office of the Vice President for Research and Economic Development and the Pentacrest Museums for the development and administration of the UI Mobile Museum, its exhibits, and resources for educators.



## Iowa Archaeology on Social Media

In addition to the OSA webpage, Iowa Archaeology social media accounts bring the archaeology of our community to tens of thousands of people across the world.

[Return to Table of Contents](#)





## Exploring Iowa Archaeology in the K–12 Classroom

A total of 2,440 K–12 students in 10 Iowa counties participated in archaeology presentations, activities, tours, and field trips with OSA staff. Many of these presentations involved, [Exploring Iowa Archaeology in the K–12 Classroom](#) activities. This program was awarded one of Governor Branstad's five inaugural STEM Advisory Council Seal of Approval designations at the 2015 Iowa STEM (Science, Technology, Engineering and Mathematics) Summit in March.

The U.S. Bureau of Land Management's [Project Archaeology](#), a national archaeological and heritage education program active in 42 states and the District of Columbia, continues to be an integral part of OSA's education and outreach activities. The OSA staff delivered a preservice teacher workshop at Grinnell College. Additionally, the OSA was awarded a grant through the Department of Natural Resources Resource Enhancement and Protection Conservation Education Program (REAP-CEP) to create a full-day curricular unit, *People and the Land*, for the

University of Iowa School of the Wild. This unit expands on components of Project Archaeology's, *Investigating a Midwestern Wickiup*, an Iowa place-based curriculum focused on the traditional Meskwaki shelter.

Beyond the classroom, the OSA has been promoting Iowa's education program successes and contributing to the field of archaeology education on a national level. In October, OSA's Director of Strategic Initiatives, Elizabeth Reetz, traveled to Bozeman, Montana, to serve as a consultant at a gathering of archaeology and heritage education professionals from across the country. Elizabeth also presented on archaeology education at both the Midwest Archaeological Conference and Society for American Archaeology (SAA) annual meetings, and served as the SAA's Public Education Committee chairperson.

[Return to Education and Outreach](#)

[Return to Table of Contents](#)







## Bringing Archaeology to Iowa Communities

OSA staff reached nearly 4,600 people in 29 Iowa counties this past fiscal year to give public community presentations and private lectures or staff an exhibit table or outreach tent. An additional six counties were reached through archaeology outreach via the UI Mobile Museum. The OSA provided programming and assistance to educational, historical, cultural, environmental, community, and tribal organizations statewide, including but not limited to: the UI, Iowa Archeological Society (IAS), Iowa's Resource Conservation & Development (RC&D) councils, Iowa Department of Natural Resources, Sac and Fox Tribe of the Mississippi in Iowa, [Calkins Nature Center](#), Wickiup Hill Outdoor Learning Center, and Coe College.

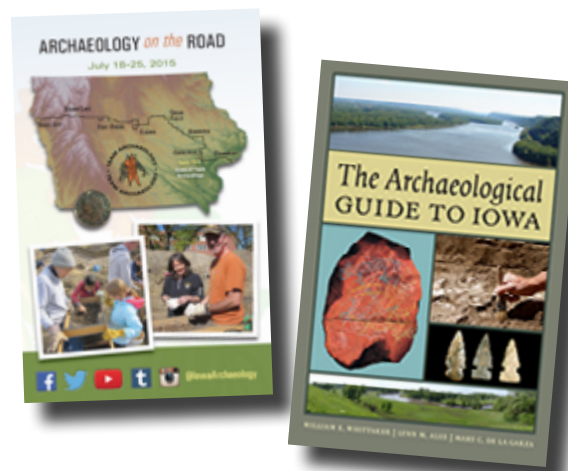
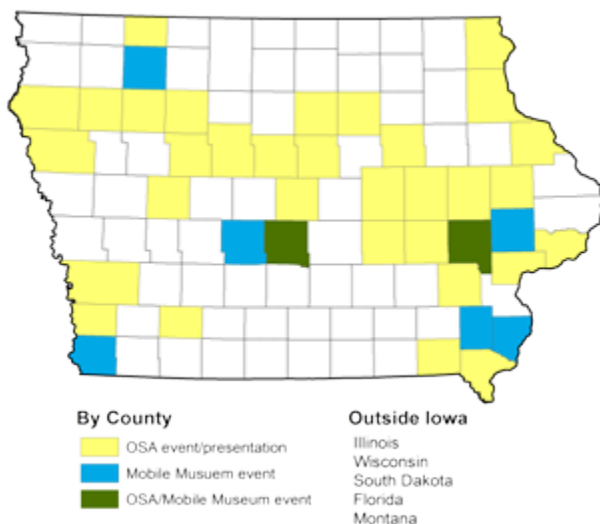
### *Iowa Archaeology on the Road*

Participation in the Des Moines Register's Annual Great Bike Ride across Iowa (RAGBRAI) remains the OSA's singular, over-arching annual outreach endeavor. For a seventh year, between July 18 and July 25, 2015, the RAGBRAI event took word of Iowa's archaeological heritage and Team Archaeology riders throughout the state along the RAGBRAI route. A web site, social media promotion, and 1,200 copies of a special booklet, [Archaeology on the Road](#) were key features of the project. Over 2,000 RAGBRAI participants and community members interacted with Team Archaeology riders and OSA outreach staff at the RAGBRAI expo in Sioux City, along the ride route, and at each overnight stop.

### *International Archaeology Day*

For the fifth year, a partnership among the OSA, IAS, Archaeological Institute of America – Iowa Chapter, UI Museum of Natural History, UI Department of Anthropology, and UI Anthropology Club collaborated to co-sponsor and celebrate International Archaeology Day, an annual event established by the Archaeological Institute of America. The events hosted by the OSA and its campus partners included lab open houses and collections' tours, special exhibits, and activities for campus and community audiences. The 2015 theme was *Ancient Technology*, highlighting technology from around the world, from medieval times and back thousands of years.

Public Presentations in Iowa, FY 2016



### *The Archaeological Guide to Iowa Book Tour*

Overlapping with the end of FY 2015, OSA collaborated with the UI Office of Outreach and Engagement and seven of Iowa's RC&D councils on a state-wide book tour. The tour offered a lecture and discussion including an overview of Iowa's archaeological past and focused on archaeological sites from the book that were unique to each community visited. Attendees met with the authors of the book and OSA outreach staff.

[Return to Education and Outreach](#)

[Return to Table of Contents](#)





## UI Mobile Museum

The OSA is part of a collaborative team with the UI's Office of the Vice President for Research and Economic Development and the Pentacrest Museums for the development and administration of the UI Mobile Museum. The Mobile Museum has new exhibits each calendar year, which are open to the public from April 1 through October 31. OSA contributions to the Mobile Museum included the development of an exhibit, *Water Underground: The Science of Iowa's Most Essential Resource*, in collaboration with the UI Department of Chemistry/Water Sustainability Initiative, Iowa Geological Survey, and the Center for Health Effects of Environmental Contaminants, which traveled until November 2015. Across Iowa **34,445** visitors viewed this exhibit.

The OSA worked with partners across campus to on two exhibits for the 2016 calendar year: [Hawkeye Power: Clean Energy for Iowans](#) and [A Wealth of Health: From Iowa to the World](#). The OSA initiated a partnership with the UI College of Education, where Leslie Flynn directed her science education students to create exhibit-based curricula for [Water Underground](#) in 2015 and [Hawkeye Power](#) in 2016 for teachers across Iowa to further engage their students before, during, and after Mobile Museum visits.

By assisting as Mobile Museum educators in FY 2015, OSA staff reached an additional 8,179 Iowans, bringing the total OSA face-to-face interactions with a public audience to **14,983** people.

[Return to Education and Outreach](#)

[Return to Table of Contents](#)





@IowaArchaeology

## Iowa Archaeology on Social Media

The education and outreach content on the OSA website remained a vigorous, interactive conduit between the public and the OSA.

The OSA's social media pages were an important venue for disseminating news and program information in FY 2016. Active social media platforms administered by the OSA include [Facebook](#), [Twitter](#), [Tumblr](#), [Instagram](#), and [YouTube](#).

The **Iowa Archaeology Facebook** page began FY 2016 with 1,266 followers and increased to 1,858 by the end of the fiscal year. The number of unique Facebook users who actively engaged with a post through likes, comments, shares, or clicks averaged 44 per day and 264 per week. An average of 593 unique Facebook users per day and 2,951 per week viewed content from the Iowa Archaeology Facebook page. A sum of the total daily number of people who viewed content associated with the page for FY 2016 equals 217,200. The most popular Iowa Archaeology Facebook posts shared news about archaeology at School of the Wild and a collaborative partnership to create an inventory of historical, archaeological and natural resources related to the Mormon migration through Iowa. These posts reached a total of 9,049 and 8,291 people, respectively, demonstrating the platform's powerful potential in terms of engagement and outreach.

**Iowa Archaeology on Twitter** began FY 2016 with 1,740 followers and ended the fiscal year with 1,974 followers. Over the course of the fiscal year, impressions (the number of times a Twitter user saw an Iowa Archaeology tweet) totaled 84,696. The number of times a Twitter user actively engaged with a tweet through clicks, shares, replies, follows, or favorites, totaled 1,171. The most engaging tweet, seen by 8,329 people, shared news about new interactive website features focused on the UI's School of Music archaeological site.

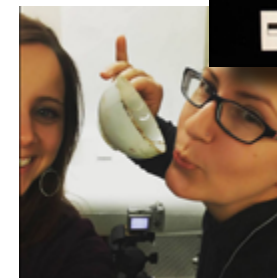
Tumblr and Instagram social media continue to be popular, however neither of these platforms have built-in analytics to track followers and engagements. The **Iowa Archaeology Tumblr** account had 10,200 followers at the end of FY

2014 and increased to 11,709 followers by the end of FY 2015. The **Iowa Archaeology Instagram** account had 398 followers and the end of FY 2015 and increased to 674 followers by the end of FY 2016.

Videos uploaded to the **Iowa Archaeology YouTube** channel generated 3,093 unique views in FY 2016. The channel gained 15 new subscribers. The most popular Iowa Archaeology videos are from the Ancient Iowa Film Series produced by former State Archaeologist Marshall McKusick in the 1970s, which generated 2,689 views.

[Return to Education and Outreach](#)

[Return to Table of Contents](#)





## OSA Mission

The primary mission activities of the University of Iowa (UI) Office of the State Archaeologist (OSA) consist of developing, disseminating, and preserving knowledge of Iowa's human past through Midwestern and Plains archaeological research, scientific discovery, public stewardship, service, and education.

The position of State Archaeologist was established in 1959; the Code of Iowa specifies the State Archaeologist shall be a member of the faculty of the Department of Anthropology at the UI. The OSA is an organized research unit of the University, meaning that the State Archaeologist, who is appointed by the Iowa State Board of Regents, directs the OSA and reports to the UI Vice President for Research and Economic Development.

The State Archaeologist consults regularly with the OSA Advisory Committee, whose members include on- and off-campus colleagues, and with the OSA Indian Advisory Council, whose members include individuals from several tribes.

## Advisory Committee

### *What they do:*

The Advisory Committee's primary purpose is to provide a structure through which the State Archaeologist, the Vice President for Research and Economic Development (VPRED), and constituency representatives may jointly discuss the creation, implementation, and execution of policies and activities that broadly affect archaeological research, education, and stewardship in Iowa. Final authority regarding the acceptance and implementation of Advisory Committee suggestions lies with the VPRED, in consultation with the State Archaeologist.

### *FY 2016 Members:*

Colin M. Betts (Luther College)

Gail Barels (Wickiup Hill Outdoor Learning Center)

Johnathan Buffalo (Sac and Fox Tribe of the Mississippi in Iowa)

David M. Gradwohl (Iowa State University)

Suzanne Wanatee Buffalo (Sac and Fox Tribe of the Mississippi in Iowa)

Lance Foster (Iowa Tribe of Kansas and Nebraska)

Jim Nepstad (Effigy Mounds National Monument)

Megan Stroh (Iowa Archeological Society)

Ann Ricketts (University of Iowa)

Leah D. Rogers (Tallgrass Historians L.C.)

Holmes A. Semken, Jr. (University of Iowa)

Glenn R. Storey (University of Iowa)

Steve King (State Historical Society of Iowa)

## Indian Advisory Council

### *What they do:*

The OSA interacts frequently with Indian tribes and communities on matters of mutual interest and concern. The OSA Indian Advisory Council includes representatives from several Indian communities in Iowa. Through regular meetings and informal consultation, Indian Advisory Council members and OSA staff members share information and address issues relating to Indian burial sites, human remains, repatriation, and other topics.

### *FY 2016 Members:*

Howard Crow Eagle (Navajo, Sioux)

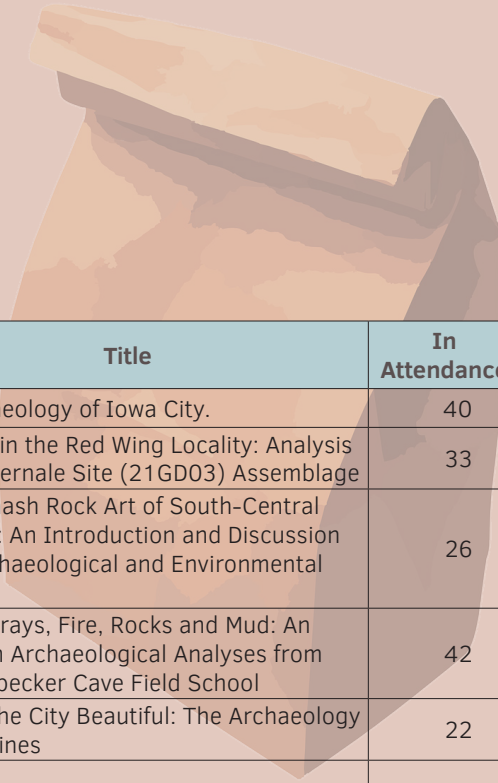
Suzanne Wanatee Buffalo (Meskwaki)

Donald Wanatee (Meskwaki)

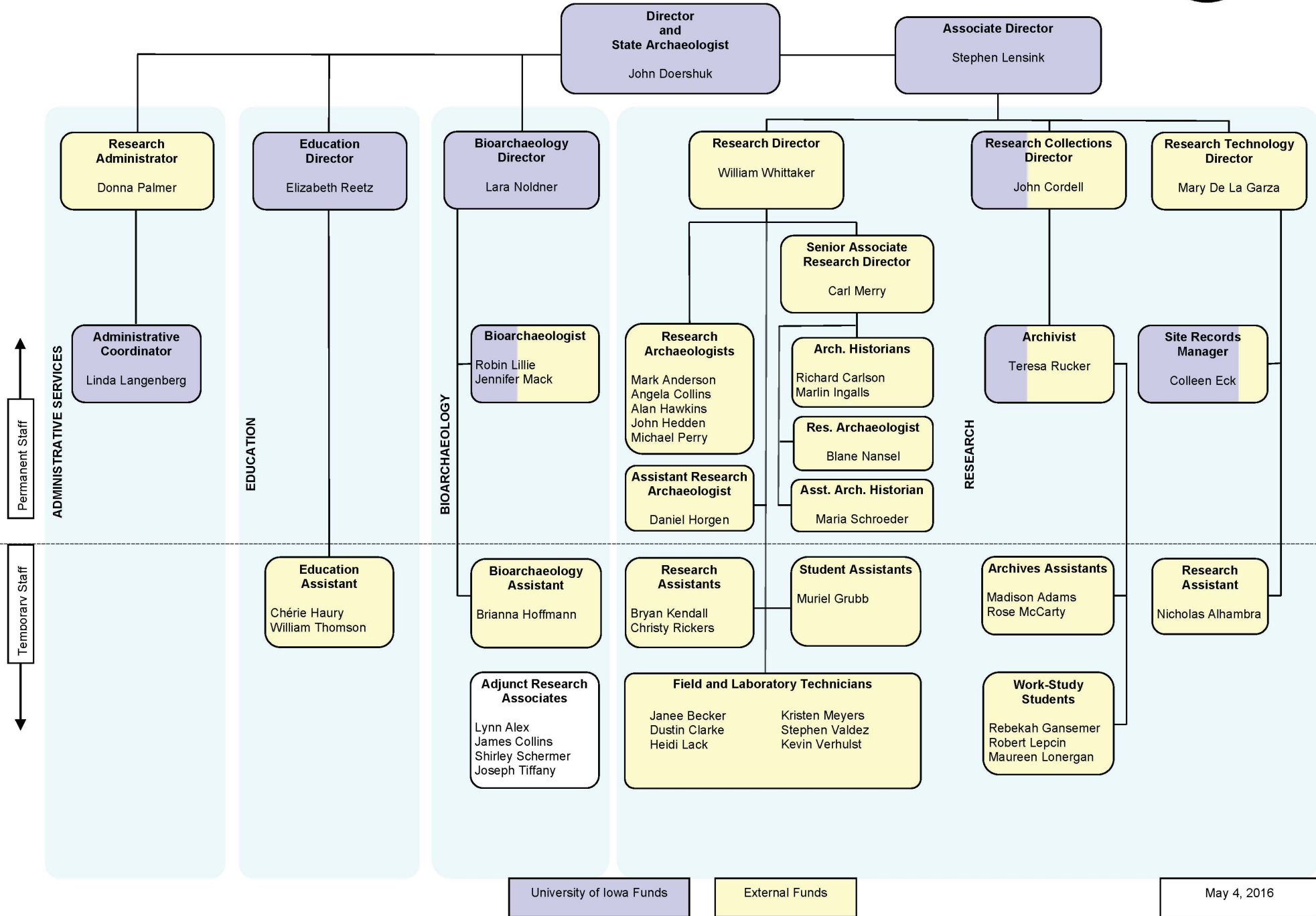


# Brown Bags

Brown Bag at the OSA is a regular series through which OSA staff and guests share their research over the lunch hour. Topics include individuals' areas of interest, work in the field, and recent developments in archaeology and architectural history throughout Iowa and the Midwest. Presentations are free and open to the public and are held in OSA's main laboratory. Attendees are encouraged to engage in discussion and exchange following the presentation.



Date of Presentation	Presenter	Association	Title	In Attendance
10/2/2015	Bill Whittaker	UI	The Archaeology of Iowa City.	40
10/9/2015	Kyle Harvey	UI	Ceramics in the Red Wing Locality: Analysis of the Silvernale Site (21GD03) Assemblage	33
11/13/2015	Michelle Wienhold	Iowa Floodplain Mapping Project, Iowa Flood Center, and UI Hydroscience and Engineering	The Chumash Rock Art of South-Central California: An Introduction and Discussion of the Archaeological and Environmental Context	26
1/29/2016	James R. McGrath, Luke Stroth, and James G. Enloe	UI	Lasers, X-rays, Fire, Rocks and Mud: An Update on Archaeological Analyses from the Woodpecker Cave Field School	42
2/12/2016	Bill Whittaker	UI	Beneath the City Beautiful: The Archaeology of Des Moines	22
3/25/2016	Brett Sorrells, Jim Peters, and Mike Zahs	Washington County Sheriff's Department, Samaritan Detection Dogs and Washington County Community Schools	Using Detection Dogs for the Identification of Human Burial Sites	38





## Office of the State Archaeologist Budgets, Fiscal Years 1987–2016

Fiscal Year	University of Iowa GEF <sup>1</sup> Support <sup>2</sup>	Research Incentive Funds <sup>3</sup>	Gifts, Fees, and Return on Endowments <sup>4,5</sup>	Grants and Contracts	Total	% Non-GEF Support	Facilities and Administration Returns
1987	\$166,378	—	—	\$343,814	\$510,192	67.4	—
1988	\$180,450	—	—	\$381,611	\$562,061	67.9	—
1989	\$218,321	—	—	\$746,440	\$964,761	77.4	—
1990	\$250,721	—	—	\$758,115	\$1,012,228	75.2	—
1991	\$241,892	—	\$3,392	\$1,032,124	\$1,294,682	81.3	—
1992	\$231,763	—	\$20,666	\$1,355,345	\$1,591,936	85.4	—
1993	\$248,162	—	\$4,828	\$1,503,660	\$1,755,747	85.9	—
1994	\$255,391	—	\$3,925	\$1,860,710	\$2,117,096	87.9	—
1995	\$273,846	—	\$995	\$1,815,692	\$2,092,980	86.9	—
1996	\$302,603	—	\$3,442	\$2,143,301	\$2,455,503	87.7	\$242,812
1997	\$343,630	\$9,227	\$9,599	\$1,792,913	\$2,150,644	83.6	\$423,888
1998	\$423,937	\$16,108	\$4,874	\$3,044,573	\$3,490,368	87.4	\$269,706
1999	\$379,304	\$10,249	\$5,750	\$2,726,245	\$3,132,349	87.6	\$358,258
2000	\$388,748	\$13,614	\$16,551	\$3,085,581	\$3,502,231	88.5	\$324,627
2001	\$395,735	\$12,336	\$14,288	\$3,531,186	\$3,980,826	89.7	\$403,836
2002	\$408,102	\$15,346	\$41,569	\$3,791,216	\$4,265,078	90.1	\$407,757
2003	\$434,657	\$15,495	\$50,414	\$2,551,074	\$3,037,292	85.2	\$361,995
2004	\$465,291	\$13,756	\$36,066	\$2,589,257	\$3,126,918	84.7	\$390,363
2005	\$458,501	\$14,834	\$58,614	\$2,357,860	\$2,932,505	83.9	\$392,968
2006	\$492,868	\$14,933	\$101,310	\$2,474,091	\$3,031,824	83.2	\$373,047
2007	\$444,831	\$14,176	\$51,932	\$3,876,329	\$4,423,189	89.5	\$469,414
2008	\$543,708	\$17,838	\$87,853	\$3,471,418	\$4,246,459	86.5	\$580,886
2009	\$581,252	\$23,276	\$213,495	\$3,622,303	\$4,605,904	87.4	\$532,334
2010	\$560,044	\$22,115	\$379,073	\$2,854,434	\$3,634,397	84.6	\$440,829
2011	\$526,065	\$16,751	\$197,804	\$3,577,491	\$4,447,546	88.2	\$534,829
2012	\$545,644	\$22,549	\$327,239	\$1,607,403	\$2,501,457	78.2	\$593,395
2013	\$556,823	\$18,866	\$325,861	\$2,702,664	\$3,384,040	83.5	\$496,486
2014	\$549,183	\$16,548	\$105,687	\$2,257,603	\$2,929,998	81.3	\$435,478
2015	\$553,675	\$11,760	\$106,664	\$2,066,947	\$2,779,426	80.1	\$309,461
2016	\$573,010	\$13,326	\$127,227	\$1,912,317	\$2,625,880	78.2	\$350,678

<sup>1</sup>General Education Fund

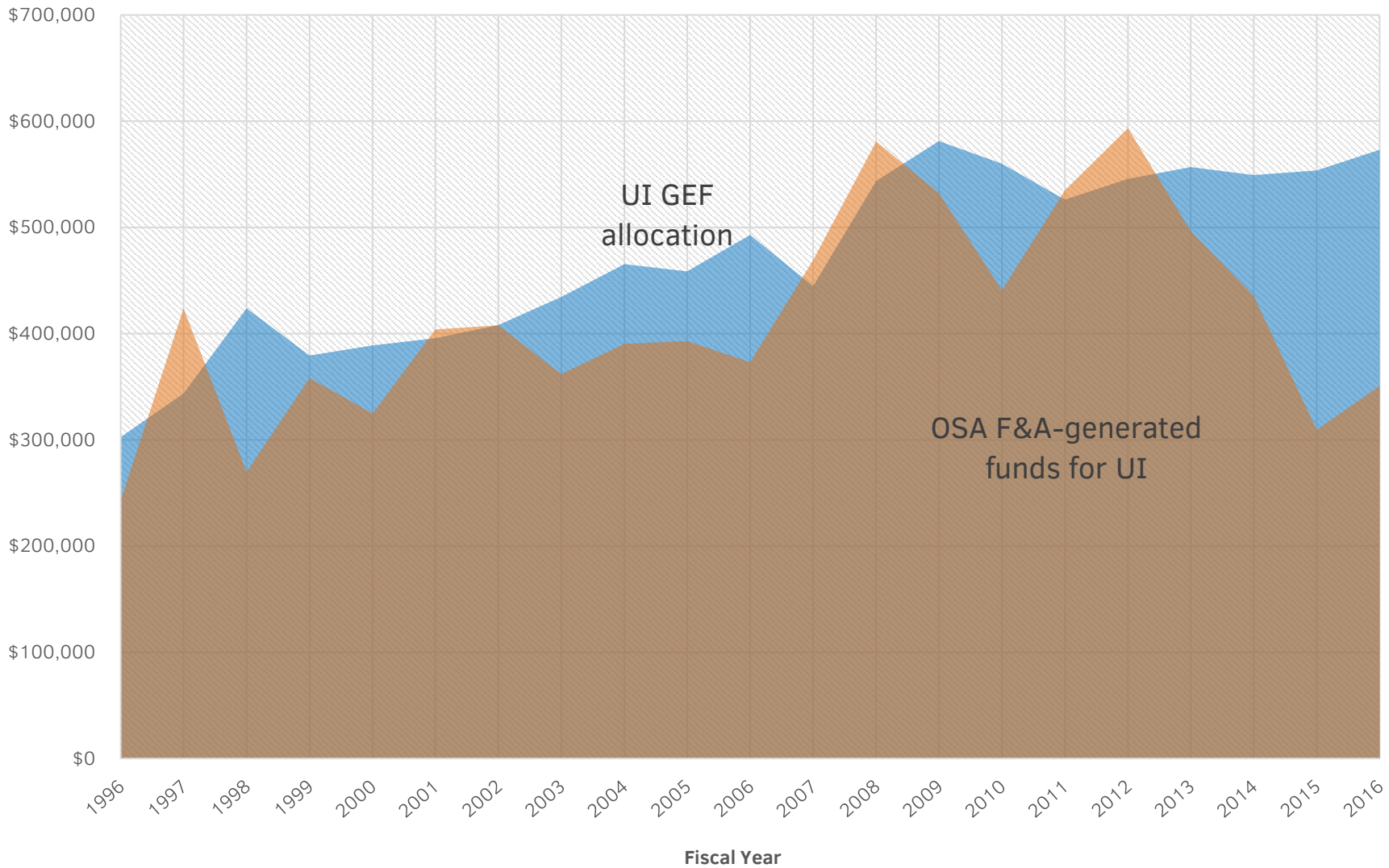
<sup>2</sup>Safety equipment contributions by the University of Iowa (UI) are not included for any year prior to FY 2007, nor are they available for these years.

<sup>3</sup>Research Incentive funds first became available in FY 1997.

<sup>4</sup>Amounts for gifts are not available for FY 1987 through FY 2002. Gifts include return on the UI Foundation's endowment funds for the Office of the State Archaeologist.

<sup>5</sup>Amounts for fees and contributions are not available for FY 1987 through FY 1989. Totals for FY 1990 through FY 2000 and FY 2002 do not include I-Site Pro license and site search fees, and totals for FY 1990 through FY 1999 do not include Bioarchaeology fees.

# General Education Fund (GEF) Received vs. Facilities & Administrative (F&A) Costs Generated

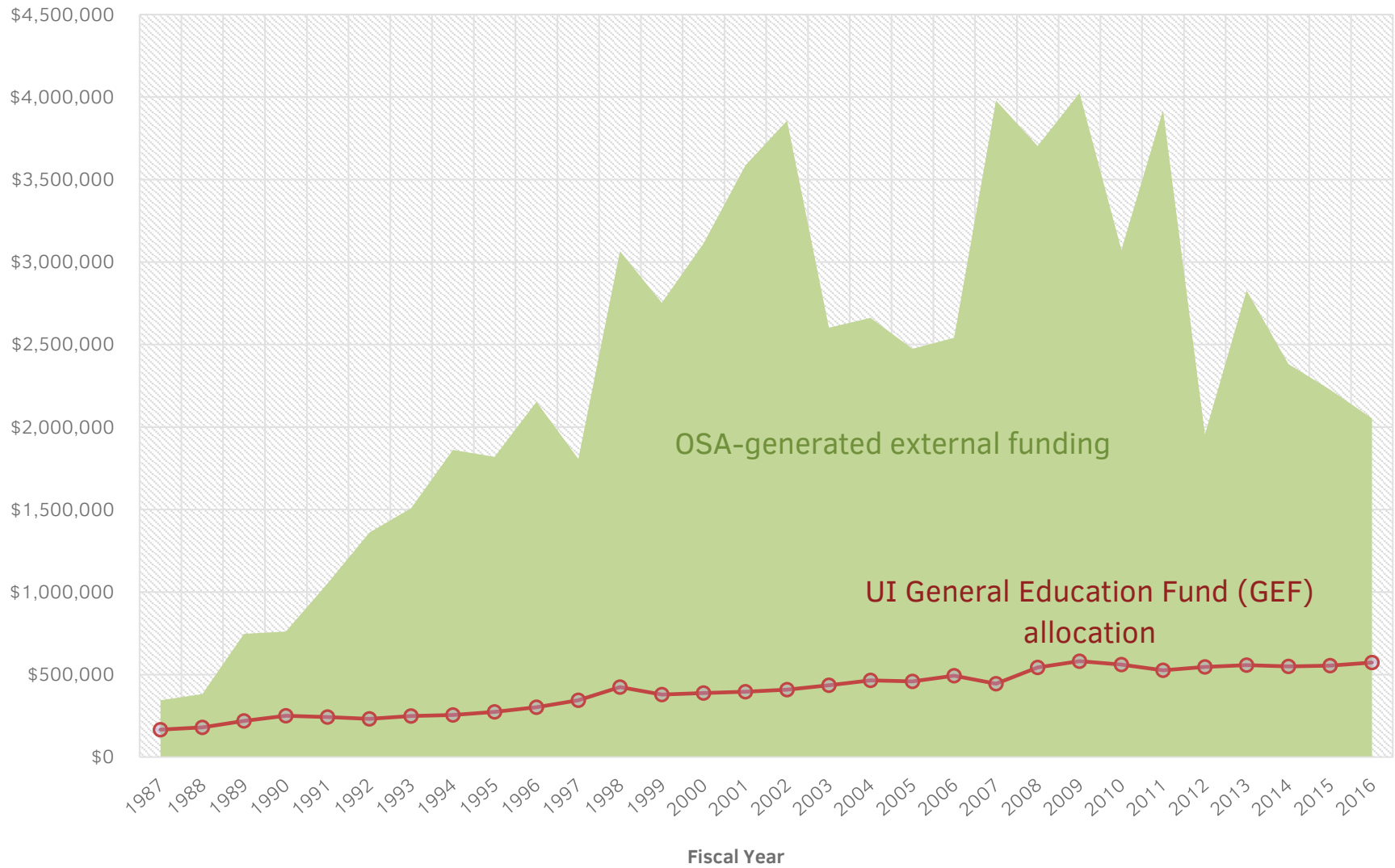




**University of Iowa General Education Fund  
Support for Office of the State Archaeologist  
Operations, Fiscal Year 2016**

Salaries	\$409,993
Fringe Benefits	\$146,365
General Expenses	\$10,608
Safety Equipment	\$1,552
General Expenses, Bioarchaeology	\$4,492
<b>Total</b>	<b>\$573,010</b>

# OSA Funding Levels, 1987-2016





## Funding Received from Gifts, Fees and Endowments, Fiscal Year 2016

Bioarchaeology	\$306
Curation Services <sup>1</sup>	\$36,075
Education and Outreach	\$17,208
Research Technology	\$70,118
Publications	\$654
Research	\$1,043
Return on Endowments	\$1,823
<b>Total</b>	<b>\$127,227</b>

<sup>1</sup>Includes return on the endowment fund held by The University of Iowa for the Office of the State Archaeologist.

## Funding Received for Sponsored Research and Services, Fiscal Year 2016

<i>SPONSOR</i>	<i>PROJECT</i>	<i>COUNTY</i>	<i>AWARD</i>
Anderson-Bogart	archaeological survey for Mehaffey Bridge Trail	Johnson	\$700
	archaeological survey for Mehaffey Bridge Trail	Johnson	\$2,408
	historic architectural survey of Cedar Rapids History Center sewer project	Linn	\$2,433
	archaeological survey of CeMar Lindale connector trail project	Linn	\$2,972
Associated Engineering	archaeological and architectural survey of Denison cell tower	Crawford	\$2,252
Brandon Sieren	archaeological survey for agricultural construction project	Washington	\$1,491
CGA	archaeological survey of Algona airport project	Kossuth	\$5,974
Charlotte Ranney	archaeological survey of residential parcel	Johnson	\$1,726
City of Ames	archaeological survey of 321 State Avenue	Story	\$2,444
City of Council Bluffs	historic architectural survey of South 8th Street	Pottawattamie	\$9,650
City of Dunkerton and Iowa Department of Natural Resources	archaeological assessment of playground project	Black Hawk	\$250
City of Evansdale	historic architectural survey of River Forest Road project	Black Hawk	\$3,393
City of Evansdale and Iowa Department of Natural Resources	archaeological assessment of bridge project	Black Hawk	\$150
City of Fort Dodge and McClure Engineering	archaeological investigation of site 13WB629 (Fort Dodge)	Webster	\$10,770
City of Lansing	cultural resource monitoring	Allamakee	\$5,425
Colorado State University	analysis of pXRF technology for archaeological research	Multi-County	\$59,000
Corn Belt Power Cooperative	archaeological survey of dam removal	Humboldt	\$1,974
Eagle Construction	archaeological assessment of Tallgrass apartment drive project	Dickinson	\$250
GSS	archaeological assessment of Dickens cell tower project	Clay	\$250
	archaeological assessment of Spencer cell tower project	Clay	\$250
	historic architectural assessment of Agency cell tower project	Wapello	\$250
	archaeological and architectural survey of Sibley cell tower project	Osceola	\$1,211
	archaeological and architectural survey of Dickens cell tower project	Clay	\$1,382
	archaeological survey of Springbrook Exhibit cell tower project	Guthrie	\$1,389
	archaeological and architectural assessment of Jewell 2 cell tower project	Hamilton	\$1,410
	archaeological and architectural survey of Appanoose cell tower project	Appanoose	\$1,490
	archaeological and architectural survey of Breda cell tower project	Carroll	\$1,682
	archaeological and architectural survey of Ames cell tower project	Story	\$1,696
	archaeological and architectural survey of Clayton cell tower project	Clayton	\$2,153
	archaeological and architectural survey of Fayette cell tower project	Fayette	\$2,153
	archaeological and architectural survey of Louisa cell tower project	Louisa	\$2,153
	historic architectural survey of Rockford cell tower project	Floyd	\$2,162
	historic architectural survey of Iowa State Fair cell tower project	Polk	\$2,197
	archaeological and architectural survey of Brooklyn cell tower project	Poweshiek	\$3,124
	historic architectural survey of Springbrook Exhibit cell tower project	Guthrie	\$3,213
	archaeological and architectural survey of O'Brien cell tower project	O'Brien	\$3,829
	archaeological and architectural survey of cell tower project in Cedar Rapids	Linn	\$4,301
	historic architectural assessment of Terrace Hill project	Polk	\$4,301
	archaeological and architectural survey of Madison cell tower project	Madison	\$4,314
	archaeological and architectural survey of State of Iowa P25 trunked radio/microwave system project	Webster	\$6,963
	archaeological and architectural survey of Keosauqua cell tower project	Van Buren	\$11,859
Hart-Frederick Consultants	archaeological assessment of Wethy subdivision project	Johnson	\$250
Helena and John Bierman	archaeological survey of Moscow agricultural building project	Muscatine	\$1,380



## Funding Received for Sponsored Research and Services, Fiscal Year 2016

<i>SPONSOR</i>	<i>PROJECT</i>	<i>COUNTY</i>	<i>AWARD</i>
Iowa Department of Agriculture and Land Stewardship	archaeological survey of Greene County wetland project	Greene	\$1,486
	archaeological survey of D. Harrington abandoned coal mine project	Marion	\$1,518
	archaeological survey of Tjaden wetland project	Floyd	\$1,524
	archaeological survey of Grundy County wetland project	Grundy	\$1,533
	archaeological survey of wetland project	Greene	\$1,657
	archaeological survey of Guthrie County wetland project	Guthrie	\$1,716
	archaeological survey of Story County wetland project	Story	\$1,766
	archaeological survey of Wright County wetland project	Wright	\$4,659
	archaeological survey of Emmet County wetland project	Emmet	\$4,713
	archaeological survey of Kossuth D abandoned coal mine project	Kossuth	\$4,817
	archaeological survey of Kossuth C abandoned coal mine project	Kossuth	\$4,822
	archaeological survey of abandoned coal mine projects	Multi-County	\$9,524
	archaeological survey of C. Rozenboom abandoned coal mine project	Mahaska	\$9,524
	Iowa Department of Natural Resources	archaeological assessment of Jennett project	Story
archaeological assessment of Rock Creek fish passage project		Mitchell	\$150
archaeological assessment of Walnut Bend project		Bremer	\$150
archaeological assessment of Nichols Ford Park project		Marshall	\$250
archaeological reconnaissance of Coon Creek		Winneshiek	\$721
archaeological reconnaissance of site 13LE10		Lee	\$931
archaeological survey of site 13DK69		Dickinson	\$963
archaeological survey of Rand Park permeable paver project		Lee	\$990
archaeological survey of Tiffin wastewater project		Johnson	\$1,105
archaeological survey of Cone Marsh project		Louisa	\$1,139
historic architectural survey of Rand Park		Lee	\$1,194
archaeological survey of Brooklyn wastewater project		Poweshiek	\$1,248
archaeological survey of Readlyn wastewater treatment plant project		Bremer	\$1,261
archaeological survey of Keystone wastewater project		Benton	\$1,282
archaeological survey of Alta well project		Buena Vista	\$1,295
archaeological survey of Grinnell wastewater project		Poweshiek	\$1,319
archaeological survey of Northwood wastewater project		Worth	\$1,366
archaeological survey of Arthur wastewater lagoon project		Ida	\$1,390
archaeological survey of Maquoketa Caves water crossing project		Jackson	\$1,554
archaeological survey of Paint Rock parking lot project		Allamakee	\$1,668
archaeological survey of Matsell Bridge oxbow project		Linn	\$1,684
archaeological survey of Big Creek Lake grade stabilization structure project		Polk	\$1,911
archaeological survey of Coggon project		Linn	\$1,927
archaeological survey of Twelve-Mile Lake project		Emmet	\$2,012
archaeological survey of Belle Plaine wastewater project		Benton	\$2,021
archaeological survey of Fort Dodge B2 water treatment project		Webster	\$2,414
archaeological survey of Coralville wastewater treatment plant project		Johnson	\$2,454
archaeological survey of Lake Geode project		Henry	\$2,768
archaeological survey of Center Lake project		Dickinson	\$2,917
archaeological survey of site 13PK952 for Des Moines interceptor project		Polk	\$3,134
archaeological survey of Geode State Park trail project		Henry	\$3,355
archaeological survey of Chichaqua airport wetland project		Polk	\$4,012
archaeological survey of Sedan Bottoms floodplain project		Appanoose	\$4,446

## Funding Received for Sponsored Research and Services, Fiscal Year 2016

<i>SPONSOR</i>	<i>PROJECT</i>	<i>COUNTY</i>	<i>AWARD</i>
Iowa Department of Natural Resources, continued	historic architectural survey of Fenton water tower	Kossuth	\$4,754
	archaeological survey of Geode State Park basin project	Henry	\$4,886
	archaeological survey of Grove Lake project	Tama	\$7,821
	historic architectural survey of Des Moines Oak Park and Highland Park Sewer	Polk	\$7,965
	archaeological survey of Hills water project	Johnson	\$8,110
	archaeological survey of Des Moines interceptor project	Polk	\$9,880
	archaeological survey of Pleasant Creek Lake shoreline project	Linn	\$16,704
Iowa Department of Transportation	archaeological survey of culvert replacement project	Humboldt	\$5,781
	archaeological survey of US 65 bridge over Spring Creek project	Franklin	\$9,235
	archaeological survey of US 65 Parcel 102 project	Jasper	\$9,985
	historic architectural survey of Des Moines mix master project	Polk	\$10,138
	ground-penetrating radar survey of site 13HR180 pioneer cemetery	Harrison	\$11,075
	archaeological survey of three bridge replacement project	Butler	\$13,923
	archaeological survey of a project in Cerro Gordo County	Cerro Gordo	\$17,762
	archaeological survey of I-35/80/235 Interchange project	Polk	\$32,745
	archaeological survey of a project in Van Buren County	Van Buren	\$34,063
	archaeological survey of a project in O'Brien County	O'Brien	\$57,588
annual program supplement	Statewide	\$968,233	
Jones County Conservation Board	historic architectural survey of Mon-Maq Dam	Jones	\$6,044
Martin Environmental Solutions, Jacksonville, Florida	historic architectural survey of Leando cell tower project	Van Buren	\$780
	archaeological and architectural survey of Lockridge cell tower project	Jefferson	\$1,805
	archaeological and architectural survey of Burlington cell tower project	Des Moines	\$1,825
	archaeological and architectural survey of Keosauqua cell tower project	Van Buren	\$1,827
	archaeological and architectural survey of Homewood cell tower project	Story	\$1,846
Matt Stoutner	archaeological survey of agricultural building project	Washington	\$1,442
MMS	archaeological survey of Iowa City Dane Road development project	Johnson	\$1,491
	archaeological survey of Bridgewater subdivision project	Johnson	\$4,676
MWF Properties of Minneapolis	data recovery plan of site 13ST323, Danish Brotherhood Hall project area	Scott	\$500
	additional data recovery plan of site 13ST323, Danish Brotherhood Hall project area	Scott	\$3,652
	data recovery excavations at site 13ST323, Danish Brotherhood Hall	Scott	\$160,977
New Century FS	archaeological evaluation of gas pump	Poweshiek	\$250
	archaeological evaluation of gas pump in Melbourne	Marshall	\$250
Oak Hill Consulting, Inc., Minnesota	archaeological reconnaissance of LaMotte Fiber project	Multi-County	\$2,403
Polk County Conservation	archaeological survey of Yellowbanks Park shelter removal project	Polk	\$1,472
Radio Communications/RCSys	archaeological and architectural survey of Chickasaw cell tower project	Chickasaw	\$1,419
Rathbun Regional Water Association	archaeological survey of Van Buren County waterline	Van Buren	\$1,590
Scott Hillebo	archaeological assessment of Big Creek tile repair project	Polk	\$250
Sherman Associates, Inc., Minneapolis	archaeological assessment of Gray's Landing office project	Polk	\$1,454
	archaeological survey of Gray's Landing office project	Polk	\$5,558
Shive-Hattery	archaeological survey of Northwest Beaver Drive trail project	Polk	\$6,194
Shoff Consulting Engineers	historic architectural survey of projec tin Eldora	Hardin	\$4,080
Simmering-Cory, Inc.	additional historic architectural survey of Cherokee downtown revitalization project	Cherokee	\$1,200
	historic architectural survey of Cherokee downtown revitalization project	Cherokee	\$3,485
Skogman Realty	archaeological survey of Seven Hills road development	Linn	\$1,363
Stanley Consultants	archaeological survey of Kent Park lake restoration project	Johnson	\$950
	archaeological survey of Kent Park lake restoration project	Johnson	\$3,510



## Funding Received for Sponsored Research and Services, Fiscal Year 2016

<i>SPONSOR</i>	<i>PROJECT</i>	<i>COUNTY</i>	<i>AWARD</i>
State Historic Society of Iowa	HRDP grant for archaeological survey of site 13IW100, Amana Fish Weir	Iowa	\$18,038
Trileaf	archaeological assessment of Arwen cell tower project	Minnesota	\$250
	archaeological survey of Haverhill cell tower project	Marshall	\$1,229
	archaeological survey of Fremont cell tower project	Mahaska	\$1,236
	archaeological survey of Summerset cell tower project	Warren	\$1,246
	archaeological survey of Liberty cell tower project	Warren	\$1,270
	archaeological survey of Camp Dodge cell tower project	Polk	\$1,286
University of Iowa, major project grant	Lake Red Rock megafauna excavation and analysis	Marion	\$37,295
US Army Corps of Engineers	Lake Red Rock megafauna initial assessment	Marion	\$2,500
US Department of the Interior, National Park Service	Native American Graves Protection and Repatriation Act consultation and documentation	Statewide	\$ 89,395
Van Buren County	archaeological survey of Bickford bridge project	Van Buren	\$7,796
Veenstra and Kimm	archaeological survey of Keokuk sewer project	Lee	\$11,920
Winnebago County Engineer	archaeological and architecture survey of Leland Bridge project	Winnebago	\$2,847
<b>Total</b>			<b>\$1,912,317</b>

## Vision

The Office of the State Archaeologist aspires to be a nationally recognized archaeological research center emphasizing interdisciplinary excellence.

## Core Values

In addition to supporting the core values stated in *Renewing The Iowa Promise: “Great Opportunities—Bold Expectations” The Strategic Plan for The University of Iowa 2010–2016*, the Office of the State Archaeologist is guided by the Society for American Archaeology’s *Principles of Archaeological Ethics*. These principles are embodied in seven commitments: *stewardship, outreach, publication, preservation, training, accountability, and professionalism*. As a nationally recognized research center, the Office of the State Archaeologist promotes a dynamic intellectual environment, energetic student and public engagement, and advanced research. We actively contribute to the University’s mission and goals. Intellectual and cultural vitality is the foundation of a healthy research organization, and the Office of the State Archaeologist is dedicated to engaging multiple constituencies. Our mission fosters a diverse and vibrant learning environment, enhancing research, teaching, and public service.

## Mission

The mission of the Office of the State Archaeologist is to develop, disseminate, and preserve knowledge of Iowa’s human past through archaeological research, scientific discovery, public stewardship, service, and education.

## GOAL 1:

Create a learning experience about the human past that enriches the lives of undergraduates and helps them to become well-informed individuals, lifelong learners, engaged citizens, and productive employees and employers.

*(Strategic Priority: Undergraduate student success)*

- Increase the visibility and awareness of educational opportunities offered by the Office of the State Archaeologist (OSA) among the University student population.
- Attract a student population to the University and OSA through outreach and mentoring programs for high school students.
- Enhance affordability and promote effective year-round learning opportunities by offering student internships, work-study positions, and summer work opportunities.
- Provide undergraduates with high-quality learning experiences through independent study opportunities at introductory and specialized levels leading to honors theses.
- Provide field schools and laboratory research projects that incorporate interdisciplinary studies and/or international collaborations.

## GOAL 2:

Promote graduate and professional student participation in OSA research through cooperation with University graduate and professional programs.

*(Strategic Priority: Graduate and professional student success)*

- Explore and develop major interdisciplinary research topics related to archaeology domestically and internationally.
- Participate in cross-disciplinary graduate degree programs with other University departments and programs.
- Recruit graduate students from University departments and programs to work on OSA projects.
- Provide research opportunities for graduate students through access to OSA’s extensive document and material collections.
- Conduct long-term archaeological projects with funded research opportunities for graduate and post-graduate scholars.



## GOAL 3:

Strengthen and expand OSA partnerships with public constituencies to advance understanding and appreciation about the human past and stewardship of archaeological resources and showcase the societal benefits of archaeological research and teaching for the citizens of Iowa.

*(Strategic Priority: Better futures for Iowans; Strategic initiative: Public outreach and civic engagement)*

- Expand partnerships with K–12 educators to promote diversity learning in Iowa history.
- Enhance lifelong learning opportunities and professional development on campus and via distance learning through partnerships between the OSA and other University departments.
- Sponsor public field schools in conjunction with OSA research or projects conducted by other partners.
- Promote OSA's public engagement programs and educational opportunities through television, radio, Internet, and print media.
- Produce and distribute self-guided tour brochures and regional guidebooks to publicly-accessible sites and facilities.
- Engage external partners to enhance archaeological stewardship and foster economic development and heritage tourism.
- Organize occasional conferences on archaeological and native studies topics, invite public and tribal participation, and prepare conference proceedings for peer-reviewed publication.

## GOAL 4:

Recognize and illuminate the human diversity inherent in the past as manifested in the archaeological record and use that record for greater inclusion and participation of professionals and the public.

*(Strategic Priorities: Knowledge and practice, Student success; Strategic Initiatives: Internationalization and diversity, Public outreach and civic engagement)*

- Encourage new and highlight existing research that illustrates the diverse peoples in Iowa's archaeological record.
- Continue OSA's national leadership role in the respectful treatment of ancient human remains.
- Encourage the Regents' institutions and statewide college communities to use OSA resources in faculty and student research.
- Contribute to developing a network of university-based partners supporting cultural heritage research endeavors, especially with the American Indian and Native Studies Program and Museum Studies Program.
- Involve interested American Indians in Iowa archaeological investigations.
- Fulfill statutory obligations in maintaining the Burials Program, the State Archaeological Repository, and the State Archaeological Site File on behalf of the public interest.

## GOAL 5:

Strengthen the OSA's intellectual and cultural vitality within the University, Iowa, and nationally.

*(Strategic Priority: Knowledge and practice, Better futures for Iowans; Strategic Initiatives: Efficiency and effectiveness, Scholarly inquiry and creative work, Internationalization and diversity)*

- Attract and retain exceptional staff through competitive compensation and professional development support.
- Maintain and enhance gender and ethnic diversity opportunities.
- Provide an environment where innovation, flexibility, and collaboration are encouraged and rewarded.
- Market the OSA's excellence through peer-reviewed publications, large research projects, high-quality cultural resource management, and excellent customer service.
- Direct resources to existing and emerging programs based on their centrality to the OSA's mission and potential for sustained excellence.
- Secure new resources and financial support through philanthropic venues and enhance support for staff in securing internal and external grant funding.
- Maintain and extend stewardship of OSA collections through continued participation within the University of Iowa Collections Coalition initiative, especially as it vitally intersects with campus-wide disaster response procedures.





## Appendix B: Public Presentations and Media Events, Fiscal Year 2016

County	Location	Staff Member	Sponsor	Date	Topic/Title	Audience
Adams	Corning	Elizabeth Reetz, Lynn Alex, Mary De La Garza	Southern Iowa RC&D, UI Office of Outreach and Engagement	July 8	<i>Archaeological Guide to Iowa</i> book tour	15
Allamakee	Marquette	Michael J. Perry	Iowa Archeological Society Spring Meeting	April 29	Ground Stone Tool Distribution at Four Glenwood Earthlodges	60
Black Hawk	Cedar Falls	Cherie Haury-Artz	IDNR	June 17	Stories Along the River	60
Black Hawk	Cedar Falls	Elizabeth Reetz, Lara Noldner	IDNR, Cedar Valley Paddlers	August 15	Archaeology along the Cedar River	30
Cedar	West Branch	Cherie Haury-Artz	OVPRED	September 10	Mobile Museum at Hoover STEM day	137
Cherokee	Cherokee	Robin Lillie, Jennifer Mack	Sanford Museum & Planetarium	April 6	Dubuque's Third Street Cemetery	14
Clay	Spencer	Cherie Haury-Artz	OVPRED	September 12–18	Mobile Museum at the Clay County Fair	3041
Clayton	Marquette	John Doershuk	Iowa Archeological Society Spring Meeting	April 30	Archaeological Consultation for the Dakota Access Pipeline	71
Dallas	Adel	Cherie Haury-Artz	OVPRED	September 23	Mobile Museum at Adel-Desoto-Minburn School	174
Dallas	Urbandale	Cherie Haury-Artz	OVPRED	September 24	Mobile Museum at Waukee School	291
Des Moines	Burlington	Cherie Haury-Artz	OVPRED	May 28	Mobile Museum at Critter Catch	267
Dickinson	Milton	Cherie Haury-Artz	Iowa Lakeside Laboratory	April 28-29	Iowa in the Time of Shakespeare	154
Dickinson	Milton	Lara Noldner	Iowa Lakeside Laboratory	June 14	Bioarchaeology: Program and Practice	10
Dubuque	Peosta	Cherie Haury-Artz	Dubuque County Conservation	April 20	Prehistory of Whitewater Canyon Area	50
Dubuque	Peosta	Cherie Haury-Artz; Elizabeth Reetz	Dubuque County Conservation	July 6	site identification/stewardship workshop	25
Fremont	Sidney	Cherie Haury-Artz	OVPRED	October 7	Mobile Museum at the Rodeo Museum	276
Hardin	Alden	Michael J. Perry, Cherie Haury-Artz	Calkins Nature Center, Hardin County Conservation	April 12	Ulch Collection Cataloging Project	15
Henry	Salem	Elizabeth Reetz	OVPRED	April 26	Mobile Museum at Salem and Lincoln Elementary schools	73
Johnson	Coralville	Cherie Haury-Artz	Coralville Central Elementary	December 9	Exploring an Archaeological Site	11
Johnson	Coralville	Cherie Haury-Artz	Southeast Iowa STEM Hub	November 7	outreach / exhibit booth featuring resources for educators and Project Archaeology information	30
Johnson	Coralville	Bill Whittaker	Take a Kid Outdoors	August 15	Archaeology along the Iowa River	30
Johnson	Coralville	Cherie Haury-Artz	Take a Kid Outdoors	August 15	Traditional Toys and Games	12
Johnson	Coralville	Melody Pope, Mark Anderson	Take a Kid Outdoors	August 15	Ancient Hunting Techniques	7
Johnson	Coralville	Cherie Haury-Artz	U.S. Army Corp of Engineers	July 18	A Walk Back Through Time	17
Johnson	Coralville	Elizabeth Reetz	OVPRED	June 22	Mobile Museum at the STEM Innovator Institute	59
Johnson	Iowa City	Elizabeth Reetz, Megan Stroh	73rd Plains Anthropological Conference	October 15	Iowa Archeological Society book table	276
Johnson	Iowa City	Mark Anderson, Elizabeth Reetz, Cherie Haury-Artz; Colleen Eck; John Doershuk	Archaeological Institute of America International Archaeology Day	October 17	International Archaeology Day featuring outreach / exhibit booth, traditional toys and games, flint knapping	200

## Appendix B: Public Presentations and Media Events, Fiscal Year 2016

County	Location	Staff Member	Sponsor	Date	Topic/Title	Audience
Johnson	Iowa City	Bill Whittaker	Growth & Development- UI Planning, Design & Construction	October 20	Archaeology and the Development of Iowa City	25
Johnson	Iowa City	Cherie Haury-Artz	Legacy Point Residential Community	February 25	I Know What They Ate	15
Johnson	Iowa City	Bill Whittaker	OSA	February 12	Beneath the City Beautiful: The Archaeology of Des Moines	50
Johnson	Iowa City	Marlin Ingalls, Kathrine Moermond	Old Capitol Museum	May 23	tunnel visit beneath the Old Capitol Museum	7
Johnson	Iowa City	Lara Noldner	Philanthropic Educational Organization	February 18	Iowa Burial Law and Mound Preservation	17
Johnson	Iowa City	John Doershuk	UI Anthropology Club	February 16	Iowa Lakeside Laboratory Field Archaeology	8
Johnson	Iowa City	Angela Collins	UI Department of Anthropology	October 22	Archaeological Illustration	11
Johnson	Iowa City	Mark Anderson	UI Department of Classics	October 8	GPS Applications in Archaeology: Examples from the OSA	30
Johnson	Iowa City	John Doershuk	UI Department of Geographical and Sustainability Sciences	February 25	CRM Archaeology and NEPA	12
Johnson	Iowa City	Marlin Ingalls, Mark Anderson	UI Departments of Geographical and Sustainability Sciences, Classics, Anthropology and the OSA, Iowa Flood Center, and ICIGO - the undergraduate geographic outreach organization	June 20	lidar mapping of the Iowa City beer caves	20
Johnson	Iowa City	Cherie Haury-Artz	OVPRED	September 1	Mobile Museum at UI	68
Johnson	Iowa City	Cherie Haury-Artz	OVPRED	November 23-24	<i>Make Your Own Aquifer</i> lesson and discussion of geological processes for STEM Institute for Young Scientists 7th grade career day	195
Johnson	Johnson	Marlin Ingalls	The University Club	March 8	Iowa City Brewing and Prohibition	200
Johnson	OSA	Elizabeth Reetz	Burlington Talented and Gifted program	September 29	OSA tour	30
Johnson	OSA	Elizabeth Reetz, Cherie Haury-Artz	Hoover Elementary School (Cedar Rapids) Culture Club	May 12	OSA tour	23
Johnson	OSA	Elizabeth Reetz	Kirkwood Community College - Iowa City Learning Center	October 29	high school job shadow	3
Johnson	OSA	Elizabeth Reetz	Kirkwood Community College - Iowa City Learning Center	October 29	high school job shadow	1
Johnson	OSA	Jennifer Mack	Kuemper Catholic Middle School	April 15	phone interview on archaeology careers with student from Kuemper Catholic Middle School in Carroll, Iowa	1
Johnson	OSA	Elizabeth Reetz	OSA	September 22	Introduction to Archaeology and NAGPRA	15

## Appendix B: Public Presentations and Media Events, Fiscal Year 2016

County	Location	Staff Member	Sponsor	Date	Topic/Title	Audience
Johnson	OSA	Elizabeth Reetz, John Doershuk, Lara Noldner, Bill Whittaker, Jennifer Mack, Robin Lillie, Brianna Hoffmann, John Cordell	OSA	March 2	Ho-Chunk Historic Preservation staff visit and tour	10
Johnson	OSA	Elizabeth Reetz, Lara Noldner, John Doershuk, Sarah Horgen	OSA, UI Museum of Natural History	August 26	OSA tour to incoming Department of Anthropology graduate students	15
Johnson	OSA	Cherie Haury-Artz, John Doershuk, John Cordell	UI Department of History	February 26	Wacoshashe's Village	13
Johnson	OSA	Lara Noldner	University of Montana	February 10	NAGPRA in Iowa and Job Opportunities in Bioarchaeology	6
Johnson	Solon	Elizabeth Reetz, Cherie Haury-Artz, Murial Grubb, Sara Anderson	Lakeview Elementary School	November 30	second grade day with archaeologists featuring presentations on Native American farming, faunal analysis, prehistoric pottery, and stratigraphy	75
Johnson	Tiffin	Cherie Haury-Artz	Clear Creek Amana High School	December 4 & 7	Pleistocene Megafauna and Iowa's Earliest Residents	152
Lee	Fort Madison	Elizabeth Reetz, Mary De La Garza	Old Fort Madison	September 12	outreach / exhibit booth featuring the archaeology of Fort Madison	96
Linn	Cedar Rapids	Cherie Haury-Artz	Grant Wood AEA	June 13–July 1	College for Kids: The Archaeology of Iowa	40
Linn	Coe College	Cherie Haury-Artz	Grant Wood AEA / Open Minds-Open Doors conference for middle school girls	October 6	Exploring an Archaeological Site	30
Linn	Toddville	Cherie Haury-Artz	Wickiup Hill Learning Center	March 8	Preserving Archaeological Sites	15
Linn	Toddville	Mark L. Anderson	Wickiup Hill Learning Center	October 31	Great Pumpkin Atlatl Hunt	12
Linn	Toddville	Mark L. Anderson	Wickiup Hill Learning Center	November 19	A Clovis Site Rediscovered: A Review of the Rummells-Maske Sites, 13CD15.	6
Mills	Glenwood	Elizabeth Reetz, Lynn Alex, Mary De La Garza	Golden Hills RC&D, UI Office of Outreach and Engagement	July 9	<i>Archaeological Guide to Iowa</i> book tour	12
Muscatine	Muscatine	Mark L. Anderson	Monsanto and MidAmerican Energy	November 19	Geology and Archaeology of the Big Sand Mound	40
Polk	Ankeny	Anais Levin	OVPRED	June 30	Mobile Museum at Kirkendall Public Library	260
Polk	Des Moines	John Doershuk	Central Chapter, Iowa Archeological Society	February 21	Iowa Lakeside Laboratory Field Archaeology	12
Polk	Des Moines	Bill Whittaker	Des Moines Area Metro Planning Association	January 9	The Archaeology of Des Moines' Raccoon Point	200
Polk	Des Moines	Elizabeth Reetz, Cherie Haury-Artz	Iowa Governor's STEM Advisory Council	February 18	exhibit booth for STEM Day at the Iowa State Capitol	100
Polk	Des Moines	Lara Noldner, Doug Jones	Iowa Land Improvement Contractors' Association	January 11	Laws Regarding Cultural Resources	27



## Appendix B: Public Presentations and Media Events, Fiscal Year 2016

County	Location	Staff Member	Sponsor	Date	Topic/Title	Audience
Polk	Des Moines	Cherie Haury-Artz	OVPRED	August 21	Mobile Museum at the State Fair	853
Polk	Des Moines	Cherie Haury-Artz	OVPRED	September 22	Mobile Museum at the DMACC Campus	121
Polk	Des Moines	Elizabeth Reetz, Cherie Haury-Artz	OVPRED	August 19	Mobile Museum at the State Fair	853
Polk	Des Moines	Elizabeth Reetz, Cherie Haury-Artz	OVPRED	August 20	Mobile Museum at the State Fair	853
Polk	Des Moines	John Doershuk	OVPRED	August 14	Mobile Museum at the State Fair	853
Pottawattamie	OSA	Blane Nansel	Lewis Central Community School, Council Bluffs	January 19	The Lewis Central School Site	3
Poweshiek	Grinnell	John Doershuk	Grinnell College Department of Anthropology	March 1	Iowa Lakeside Laboratory Field Archaeology	12
Poweshiek	Grinnell	Elizabeth Reetz, Cherie Haury-Artz	Grinnell College Education Department	April 22	Project Archaeology	4
Scott	Bettendorf	Cherie Haury-Artz	Bettendorf Middle School	October 12–13	Exploring an Archaeological Site	375
Scott	Nahant Marsh Conservation Area	Mark Anderson	Scott County Conservation	February 13	atlatl throw at the Nahant Marsh Rustic Winter Competition	36
Scott	Nahant Marsh Conservation Area	Mark Anderson	Scott County Conservation	March 23	Geology, Environment, and Prehistory of Eastern Iowa: An Archaeological Perspective	25
Story	Ames, Story	John Doershuk	Iowa State University Department of Anthropology	March 9	Iowa Lakeside Laboratory Field Archaeology	65
Tama	Meskwaki Settlement	Elizabeth Reetz, Cherie Haury-Artz	Meskwaki Powwow	August 7–8	outreach/exhibit booth featuring historic Meskwaki artifacts and traditional toys and games	600
Van Buren	Bonaparte	William Whittaker, Lynn Alex, Elizabeth Reetz	Pathfinders RC&D, UI Office of Outreach and Engagement	July 14	<i>Archaeological Guide to Iowa</i> book tour	25
Washington	Washington	Bryan Kendall	Washington City Historic Preservation Commission	May 15	The Shade Gap Incident: Remembering Terry Ray Anderson on the 50th Anniversary of His Death	50
Woodbury	Sioux City	John Doershuk; Elizabeth Reetz; Lara Noldner; Mark Anderson; Mary De La Garza; Lily Doershuk	Register's Annual Great Bicycle Ride Across Iowa	July 18	outreach / exhibit booth featuring Team Archaeology and eight years of <i>Archaeology on the Road</i>	1650

## Appendix B: Public Presentations and Media Events, Fiscal Year 2016

County	Location	Staff Member	Sponsor	Date	Topic/Title	Audience
Woodbury; Plymouth; Cherokee; Buena Vista; Pocahontas; Calhoun; Webster; Hamilton; Hardin; Franklin; Butler; Blackhawk; Benton; Linn; Jones; Johnson; Muscatine; Scott	Sioux City to Davenport	Alan Hawkins, Nick Alhambra, Mark Anderson, Lara Noldner, Elizabeth Reetz	Register's Annual Great Bicycle Ride Across Iowa	July 19–25	Team Archaeology outreach and ride team featuring eight years of <i>Archaeology on the Road</i>	350
Illinois	Rock Island	Angela Collins	Quad Cities Archaeological Society	April 26	Diving into the Well	25
Illinois	Rock Island	Bryan Kendall	Quad Cities Archaeological Society	March 29	Recent Archaeological Investigation of Bruggman Cave in Jones County, Iowa	40
Illinois	Rock Island	John Hedden	Quad Cities Archaeological Society	May 31	Smoke Beyond the Water: Central Plains Tradition Pipes East of the Missouri River	30

AEA = Area Education Agency, IDNR = Iowa Department of Natural Resources, NAGPRA = Native American Graves Protection and Repatriation Act, OVPRED = University of Iowa Office of the Vice President for Research and Economic Development, RC&D = Resource Conservation and Development

## Appendix C: Presentations at Professional Meetings, Fiscal Year 2016

Staff Member	Conference	Location	Date	Paper Title
Anderson, Mark L.	Midwest Archaeological Conference, Inc.	Milwaukee, Wisconsin	November 7, 2015	From Grab Samples to pXRF: Continuing Improvements to the UI-OSA Lithic Raw Material Assemblage
Anderson, Mark L.	128th Annual Meeting of the Iowa Academy of Science	Des Moines	April 23, 2016	The Confusing Conundrum of Scotch Grove, Wapsipinicon, and Palisades-Kepler Chert: Exploration of the Silurian/Devonian Systems
Anderson, Mark L., and John F. Doershuk	73rd Plains Anthropological Conference	Iowa City	October 17, 2015	The Rummells-Maske Site, 13CD15: A Lost Site Rediscovered
Anderson, Mark L.	4th Biennial Lithic Workshop	Sioux Falls, South Dakota	February 20, 2016	The Confusing Conundrum of Scotch Grove, Wapsipinicon, and Palisades-Kepler Chert: Exploration of the Silurian/Devonian Systems
Anderson, Mark L., and Muriel Grubb	128th Annual Meeting of the Iowa Academy of Science	Des Moines	April 22, 2016	A New Method Applied to an Old Technology: High Resolution Scanning of USDA Aerial Photographs for Iowa Archaeological Research
Doershuk, John F.	73rd Plains Anthropological Conference	Iowa City	October 16, 2015	Student Workshop panel participant, "Professionalism and Mentoring"
Doershuk, John F. (with Melody K. Pope, William E Whittaker, Cynthia L. Peterson, and Angela R. Collins)	Midwest Archaeological Conference, Inc.	Milwaukee, Wisconsin	November 7, 2015	Hubbard Park and Voxman School of Music: Campus Archaeology at the University of Iowa
Doershuk, John F.	Midwest Archaeological Conference, Inc.	Milwaukee, Wisconsin	November 7, 2015	Forum participant representing the Association of Iowa Archaeologists in the session: Professional Archaeological Societies in the 21st Century
Doershuk, John F.	Midwest Archaeological Conference, Inc.	Milwaukee, Wisconsin	November 7, 2015	Student Workshop panel participant
Doershuk, John F. (with Melody K. Pope, William E Whittaker, Cynthia L. Peterson, and Angela R. Collins)	Midwest Archaeological Conference, Inc.	Milwaukee, Wisconsin	November 7, 2015	Hubbard Park and Voxman School of Music: Campus Archaeology at the University of Iowa
Lonergan, Maureen, John F. Doershuk, and Madeleine A. Hoofnagle (with Sara L. Anderson)	73rd Plains Anthropological Conference	Iowa City	October 17, 2015	Woodland Ceramics in Iowa's Prairie Lakes Region: 13DK96
Noldner, Lara, Suzanne Wanatee Buffalo, Johnathan Buffalo	Society for American Archaeology Annual Meeting	Orlando, Florida	April 9, 2016	Attimoni (ah-jee-MOOHUN) - The Stories We Have to Tell: Relationships Among the Meskwaki Nation, Tribes with Historic Ties to Iowa, and the Iowa Office of the State Archaeologist
Reetz, Elizabeth	Midwest Archaeological Conference, Inc.	Milwaukee, Wisconsin	November 7, 2015	Archaeology Education & Outreach in the Midwest: Creating a Stronger Network
Reetz, Elizabeth, and William Quackenbush	Society for American Archaeology Annual Meeting	Orlando, Florida	April 9, 2016	Creating Collaborative Learning Opportunities for Indigenous Youth with Archaeology-based Environmental Education
Whittaker, William E., Melody Pope, Angela R. Collins, Leslie L. Bush, and Joe A. Artz	73rd Plains Anthropological Conference	Iowa City	October 17, 2015	The Palace Site (13PK966)
Whittaker, William E.	Midwest Archaeological Conference, Inc.	Milwaukee, Wisconsin	November 6, 2015	GIS Analysis of Historic Indian Sites in Iowa



## Appendix D: Publications, Fiscal Year 2016

Staff Member	Journal or Book	Article or Chapter Title	Publication Date
Collins, Angela R.	<i>Newsletter of the Iowa Archeological Society</i> 65(1):2–3	Burn Up the Corset!	2016
Collins, Angela R.	<a href="http://iowaarchaeology.org/Timeline/SOM%20Archeological%20Site.html">http://iowaarchaeology.org/Timeline/SOM%20Archeological%20Site.html</a>	University of Iowa School of Music Archaeological Site (interactive timeline)	Spring 2016
Collins, Angela R.	<a href="http://iowaarchaeology.org/Bottle_Timeline/SOM%20Bottles.html">http://iowaarchaeology.org/Bottle_Timeline/SOM%20Bottles.html</a>	School of Music Archaeological Site Bottle Manufacture (interactive timeline)	Spring 2016
Doershuk, John F.	<i>Journal of the Iowa Archeological Society</i> 62:13–32	Late Woodland Components at the Fort Madison Senior Housing Site (13LE539), Lee County, Iowa	Fall 2015
Doershuk, John F., and Melody K. Pope (with Robert A. Cook, Robert J. Jeske, Timothy R. Pauketat, Amie L. Rosebrough, and Ronald C. Schirmer)	<i>Midcontinental Journal of Archaeology</i> 40(3):193–208.	Sense and Sensibility in Midwestern Archaeology and the Midcontinental Journal of Archaeology, Part III	Fall 2015
Doershuk, John F. (with Francis P. McManamon, William D. Lipe, Tom McCulloch, Christopher Polgase, Susan Schlanger, Lynne Sebastian, and Lynne Sullivan)	<i>Advances in Archaeological Practice</i> 4(2):132–148	Values-Based Management of Archaeological Resources at a Landscape Scale	2016
Hedden, John G.	<i>Perspectives on the Archaeology of Pipes, Tobacco and other Smoke Plants in the Ancient Americas</i> (Springer, Interdisciplinary Contributions to Archaeology, pp. 135–156.	Central Plains Tradition Smoking Pipes in the Glenwood Locality of Iowa: Within a Landscape of the Rising and Falling Sky	Spring 2016
Horgen, Daniel G.	<i>Newsletter of the Iowa Archeological Society</i> 65(4):6–7	What's the Point	2015
Perry, Michael J.	<i>Newsletter of the Iowa Archeological Society</i> 65(4):3	Keyes First Visit to Toolesboro	2015
Perry, Michael J.	<i>Journal of the Iowa Archeological Society</i> 62:33–40	Hook Mound Group	Fall 2015
Whittaker, William E.	WorldMap, Harvard University. <a href="http://worldmap.harvard.edu/maps/6829">worldmap.harvard.edu/maps/6829</a>	A Walking Tour of Des Moines Archaeology	2016
Whittaker, William E.	<i>Newsletter of the Iowa Archeological Society</i> 66(2)5–6.	A 'New' Arm on the Amana Indian Fish Weir Appears	2016
Whittaker, William E.	<i>Newsletter of the Iowa Archeological Society</i> 65(3)7–11.	Odd 19th Century Iowa Archaeology	2015
Whittaker, William E.	<i>Midcontinental Journal of Archaeology</i> 41(2):159–185	An Analysis of Historic-Era Indian Locations in Iowa	2016

## Appendix E: Appointments, Awards, and Service on Boards, Commissions, or Committees, Fiscal Year 2016

Staff Member	Appointment, Award, Board, Commission, or Committee Name	Meeting Location	Duration/Date	Description
Anderson, Mark L.	Iowa Academy of Science Board of Directors	varies	annual	manages the affairs of the Academy. It engages the services of qualified individuals to assist in the proper execution of Academy activities including its mission to promote science research, science education, the public understanding of science, and to recognize excellence in these endeavors. Members of the Board of Directors serve three year terms.
Anderson, Mark L.	Iowa Academy of Science, Anthropology Section Chair	varies	annual	organize annual meeting presentations and posters for the Anthropology Section as well as provide information and support to the academy as requested.
Anderson, Mark L.	Big Sand Mound Preserve Board, Archaeology and Geology Representative	Muscatine	biannual	demonstrate the commitment to environmental education, ecological restoration and has the potential to serve as a model for other land stewards
Anderson, Mark L.	Association of Iowa Archaeologist, Past President	varies	annual	maintain continuity of the AIA by working closely with the President and other elected officers.
Anderson, Mark L.	Archaeological Institute of America, Iowa Society President	Iowa City	annual	organize annual lecture series, coordinate nationally sponsored guest lecture visits, coordinate International Archaeology Day activities, and serve to foster and enhance the local society members interests in archaeology
Collins, Angela R.	Assistant Editor, <i>Journal of the Iowa Archeological Society</i>	n/a	annually	Helped produce vol. 62 of the Journal of the Iowa Archeological Society
Doershuk, John F.	Iowa Archeological Society Board (ex officio member)	varies	two times annually	unite those interested in the archaeology of Iowa; foster cooperation among professional and amateur archaeologists; promote the study, investigation, and interpretation of prehistoric and historic remains in Iowa; provide for the dissemination of knowledge and research in archaeology and related disciplines; encourage the recording and preservation of sites and artifacts; and develop a constructive attitude toward these cultural resources through education and public involvement
Doershuk, John F.	Adjunct Assistant Professor	Iowa City	academic year 2015–2016	serve as adjunct faculty for University of Iowa Department of Anthropology
Doershuk, John F.	Visiting Lecturer	Mt. Vernon	academic year 2015–2016	serve as lecturer for Cornell College Department of Sociology and Anthropology
Doershuk, John F.	Effigy Mounds National Monument Review Board	varies	at least twice annually	participate in providing oversight to multiple on-going investigations concerning cultural resources compliance issues
Doershuk, John F.	<i>Midcontinental Journal of Archaeology</i> , Editorial Board	electronically	as needed by Editor	advise Editor on publication issues as needed
Doershuk, John F.	Promotion & Tenure Committee, Arizona State University Department of Anthropology	electronically	academic year 2015–2016	external reviewer
Doershuk, John F.	Register of Professional Archaeologists Standards Board	electronically	as needed	advise Standards Board Chair on issues involving grievances stemming from Register of Professionals Archaeologists member violations of the “Standards of Research Performance” ( <a href="http://rpanet.org/?page=CodesandStandards">http://rpanet.org/?page=CodesandStandards</a> )
Doershuk, John F.	Blood Run National Historic Landmark State Management Team	Larchwood and Rock Rapids	as needed	participate in providing oversight to the on-going master planning process for the long term protection of ancient human remains and other cultural resources encompassed by the Nation Historic Landmark

## Appendix E: Appointments, Awards, and Service on Boards, Commissions, or Committees, Fiscal Year 2016

Staff Member	Appointment, Award, Board, Commission, or Committee Name	Meeting Location	Duration/Date	Description
Doershuk, John F.	Chair, Midwest Archaeological Conference, Inc. annual meeting planning committee	Iowa City	monthly	plan for all aspects of the annual meeting, Iowa City, October 2016
Doershuk, John F.	Society for American Archaeology Task Force	electronically	as needed	value archaeological sites and develop guidelines for best practices in landscape approaches to discovering and managing archaeological resources)
Lensink, Stephen C.	Adjunct Assistant Professor	Iowa City	academic year 2015–2016	serve as adjunct faculty for University of Iowa Department of Anthropology
Merry, Carl	State Historical Society of Iowa, State Nominations Review Committee	Des Moines and Wilton	three times annually	review and approve nominations for archaeological and architectural properties for listing on the National Register of Historic Places; review and approve archaeological and historic preservation grant applications
Noldner, Lara K.	Adjunct Assistant Professor	Iowa City	academic year 2015–2016	serve as adjunct faculty for the University of Iowa Department of Anthropology
Noldner, Lara K.	Blood Run National Historic Landmark Master Planning Team	Larchwood and Rock Rapids	as needed	participate in providing oversight to the on-going master planning process for the long term protection of ancient human remains and other cultural resources encompassed by the Nation Historic Landmark
Reetz, Elizabeth C.	Project Archaeology, Iowa State Coordinator	varies, nationwide	biennially	act as a liaison between the national Project Archaeology network and leadership team and Iowa's Project Archaeology master teachers
Reetz, Elizabeth C.	Society for American Archaeology, Public Education Committee Chairperson	varies, nationwide	annually	provide expert advice to the Board on public education and outreach to carry out the Society's mission to provide leadership in education about archaeology.
Reetz, Elizabeth C.	Society for American Archaeology, Public Education Committee Network of State Coordinators	varies, nationwide	annually	serve as the Iowa representative as a liaison between the Public Education Committee and organizers of public education at the state level. Provide extra support as the Network's social media co-administrator
Reetz, Elizabeth C.	Iowa Archeological Society Board	varies	at least twice annually	unite those interested in the archaeology of Iowa; foster cooperation among professional and amateur archaeologists; promote the study, investigation, and interpretation of prehistoric and historic remains in Iowa; provide for the dissemination of knowledge and research in archaeology and related disciplines; encourage the recording and preservation of sites and artifacts; and develop a constructive attitude toward these cultural resources through education and public involvement
Whittaker, William E.	Editor, <i>Journal of the Iowa Archeological Society</i>	n/a	annually	Edited vol. 62 of the Journal of the Iowa Archeological Society
Whittaker, William E.	Iowa Archeological Society Board	varies	at least twice annually	unite those interested in the archaeology of Iowa; foster cooperation among professional and amateur archaeologists; promote the study, investigation, and interpretation of prehistoric and historic remains in Iowa; provide for the dissemination of knowledge and research in archaeology and related disciplines; encourage the recording and preservation of sites and artifacts; and develop a constructive attitude toward these cultural resources through education and public involvement



## Appendix F: Technical Reports, Fiscal Year 2016

Number	Author	Title
TR 112	Bush, Leslie L., Richard J. Carlson, Angela R. Collins, Johnica J. Morrow, Michael J. Perry, and William E. Whittaker	<i>Data Recovery Excavations at 13JH1436, Voxman School of Music Project, University of Iowa, Johnson County, Iowa. Volume I—Text, Figures, Tables, and Appendices.</i>
TR 121	Carlson, Richard J., and Marlin R. Ingalls	<i>Phase I Intensive Historic Architectural Survey of the Sabin School and Southside Iowa City Neighborhood, Johnson County, Iowa</i>
TR 138	Nansel, Blane H.	<i>Letter Report of July 7, 2015 to Lowell Miller regarding STP-S-C006(103)--5E-06, Cultural Resources Evaluation, Benton County Local Systems.</i>
TR 139	Nansel, Blane H.	<i>Letter Report of July 8, 2015 to Larry Spellerberg regarding BHM-7057(687)--8K-97, Cultural Resources Evaluation, City of Sioux City, Woodbury County Local Systems.</i>
TR 142	Nansel, Blane H.	<i>Letter Report of July 10, 2015 to Scott Shippers regarding BROS-C062(90)--5F-62, Cultural Resources Evaluation, Mahaska County Local Systems.</i>
TR 146	Nansel, Blane H.	<i>Letter Report of July 13, 2015 to David Carroll regarding BROS-C091(102)--5F-91, Cultural Resources Evaluation, Warren County Local Systems.</i>
TR 147	Nansel, Blane H.	<i>Letter Report of July 15, 2015 to Brennan Dolan regarding BROS-C046(60)--8J-46, Cultural Resources Evaluation, Humboldt County Local Systems.</i>
TR 148	Nansel, Blane H.	<i>Letter Report of July 22, 2015 to Paul Assman regarding BROS-C024(108)--5F-24, Cultural Resources Evaluation, Crawford County Local Systems.</i>
TR 149	Kendall, Bryan S.	<i>Phase I Intensive Archaeological Investigation of the Proposed New Wastewater Treatment Facility Project, Coggon, Sections 3 and 10, T86N-R06W, Linn County, Iowa.</i>
TR 150	Merry, Carl A.	<i>Annual Report of Cultural Resource Investigations for the Iowa Department of Transportation, Fiscal Year 2015. Technical Report 150. Office of the State Archaeologist, University of Iowa, Iowa City.</i>
TR 151	Nansel, Blane H.	<i>Letter Report of July 31, 2015 to Jeremiah Selby regarding BROS-C068(73)--5F-68, Cultural Resources Evaluation, Monroe County Local Systems.</i>
TR 152	Whittaker, William E.	<i>Phase I Archaeological Survey of Portions of the Proposed Des Moines Metropolitan Wastewater Reclamation Authority Eastside Interceptor Phase 27 Segments 18 Project, Des Moines, Polk County, Iowa.</i>
TR 153	Kendall, Bryan S., and Melody K. Pope	<i>Letter Report of July 29, 2015 to Monica Thelen regarding archaeological evaluation, 14CRDFBMKONR0001WO #027 Walnut Bend Shallow Water Wildlife Areas, Sections 28-29, T91N-R14W Bremer County, Iowa.</i>
TR 154	Kendall, Bryan S., and Melody K. Pope	<i>Letter Report of July 29, 2015 to Monica Thelen regarding archaeological evaluation, 14CRDFBMKONR0001WO #028 Jennett Heritage CRP Wetland Enhancement, Section 31, T83N-R22W Story County, Iowa.</i>
TR 158	Whittaker, William E.	<i>Phase IA Archaeological Reconnaissance Investigation of the Proposed Gray's Landing Office Development Project, Des Moines, Polk County, Iowa.</i>
TR 159	Nansel, Blane H.	<i>Letter Report of August 7, 2015 to Ryan Brennan regarding BROS-C007(138)--8J-07, Cultural Resources Evaluation, Black Hawk County Local Systems.</i>
TR 160	Nansel, Blane H.	<i>Letter Report of August 14, 2015 to Jeff Baltes regarding BROS-C035(89)--5F-35, Cultural Resources Evaluation, Franklin County Local Systems.</i>
TR 161	Collins, Angela R.	<i>Letter Report of August 14, 2015 to Jamila Reid regarding New Boundaries for MIN Arwen Project Area, OSA Assessment Proposal.</i>
TR 162	Whittaker, William E.	<i>Letter Report Regarding Tuttle and SW 11th Street Sewer Line Development, Des Moines, Polk County, Iowa, OSA FY15P133</i>
TR 163	Whittaker, William E.	<i>Letter Report Regarding Nexus at Gray's Landing Development, Tuttle and SW 11th Streets, Des Moines, Polk County, Iowa, OSA FY15P140</i>
TR 164	Ingalls, Marlin R.	<i>Phase I Architectural History Survey IM-035-4(158)87-0E-77, Polk County</i>
TR 165	Kendall, Bryan S.	<i>Phase I Intensive Archaeological Investigation of the Proposed Union Grove Lake Spillway Repair, Shoreline Stabilization and Dredging Project, Union Grove State Park, Sections 32 and 33, T85N-R16W and Section 5, T84N-R16W, Tama County, Iowa</i>
TR 166	Hawkins, Alan J.	<i>Phase I Intensive Archaeological Investigation of the Proposed CeMar Trail Project, Daniels Park and Tomahawk Park, Sections 15 and 16, T83N-R7W, City of Cedar Rapids, Linn County, Iowa</i>
TR 167	Nansel, Blane H.	<i>BROS-C054(102)--5F-54, Cultural Resources Evaluation, Keokuk County, Local Systems</i>
TR 168	Nansel, Blane H.	<i>STP-U-5330(626)--70-70, Cultural Resources Evaluation, City of Muscatine, Muscatine County, Local Systems</i>
TR 169	Nansel, Blane H.	<i>BROS-C025(101)--5F-25, Cultural Resources Evaluation, Dallas County, Local Systems</i>
TR 170	Anderson, Mark L., and William E. Whittaker	<i>Phase IA Cultural Resource Reconnaissance for the Des Moines Water Trail Corridor Through Portions of Boone, Dallas, Jasper, Marion, Polk, Story, and Warren Counties, Iowa</i>
TR 171	Kendall, Bryan S., and Richard J. Carlson	<i>Phase I Intensive Archaeological Investigation and Phase IA Historic Architectural Reconnaissance Survey of the Proposed Development Project, Grinnell, Sections 32 and 33, T80N-R16W, Poweshiek County, Iowa</i>

## Appendix F: Technical Reports, Fiscal Year 2016

Number	Author	Title
TR 172	Nansel, Blane H.	<i>BRS-C012(93)--8J-12, Cultural Resources Evaluation, Butler County, Local Systems</i>
TR 173	Nansel, Blane H.	<i>BRS-3102(602)--60-12, Cultural Resources Evaluation, City of Greene, Butler County, Local Systems</i>
TR 174	Kendall, Bryan S.	<i>Phase I Intensive Archaeological Investigation of the Proposed Low Water Crossing Project, Maquoketa Caves State Park (DR4187, PW51), Section 6, T84N-R2E, Jackson County, Iowa</i>
TR 175	Collins, Angela R., and Christy S. Rickers	<i>Phase I Intensive Archaeological Investigation of the Proposed City of Arthur Wastewater Lagoon Expansion Project, Section 23, T87N-R39W, Ida County, Iowa</i>
TR 176	Perry, Michael J.	<i>Data Recovery Plan for 13LA904, 13LA921, and 13DM1432</i>
TR 177	Whittaker, William E.	<i>Archaeological Data Recovery Plan for the Danish Brotherhood Hall, 609 W. Fourth Street, Davenport, Scott County, Iowa</i>
TR 178	Kendall, Bryan S., and Melody K. Pope	<i>Letter Report of September 11, 2015 to Doug Faas regarding archaeological evaluation, Angels Park Bridge, Section 6, T88N-R12W Black Hawk County, Iowa.</i>
TR 179	Kendall, Bryan S., and Melody K. Pope	<i>Letter Report of September 11, 2015 to Zach Pierce regarding archaeological evaluation, Carroll Hauptly Memorial Park, Section 33, T90N-R11W Black Hawk County, Iowa.</i>
TR 180	Horgen, Daniel G.	<i>Phase I Archaeological Survey of an Abandoned Coal Mine Reclamation Project (a.k.a C. Rozenboom AML Site), Section 35 and 36, T74N-R17W, Mahaska County, Iowa</i>
TR 181	Hawkins, Alan J.	<i>Phase I Archaeological Survey of Seven Abandoned Coal Mine Reclamation Projects (a.k.a. Brown, Bussey, Indiana West, Northup North, Rowley, Schmitz, and Waechter AML Sites), Located in Davis, Marion, and Wapello Counties, Iowa</i>
TR 182	Kendall, Bryan S.	<i>Phase I Intensive Archaeological Investigation of the Proposed Wetland Reclamation Project, Section 30, T99N-R33W, Emmett County, Iowa</i>
TR 183	Kendall, Bryan S.	<i>Phase I Intensive Archaeological Investigation of the Proposed Wetland Reclamation Project, Section 34, T93N-R25W, Wright County, Iowa</i>
TR 184	Kendall, Bryan S.	<i>Phase I Intensive Archaeological Investigation of the Proposed Sediment Retention Basin Project, Geode State Park, Sections 26, 35 and 36, T70N-R5W, Henry County, Iowa</i>
TR 185	Nansel, Blane H.	<i>BRS-C078(189)--60-78, Cultural Resources Evaluation, Pottawattamie County, Local Systems</i>
TR 186	Hawkins, Alan J.	<i>Phase I Intensive Archaeological Investigation of the Proposed 321 State Avenue Project, Section 8, T83N-R24W, City of Ames, Story County, Iowa</i>
TR 187	Perry, Michael J.	<i>A Phase I Archaeological Survey of Heendah Hills State Preserve Priority Area 1, Section 22, T90N-R48W, Plymouth County, Iowa</i>
TR 188	Nansel, Blane H.	<i>Letter Report of October 5, 2015 to Zachary Hergenrader regarding BRS-C078(189)--60-78, Cultural Resources Evaluation, Pottawattamie County Local Systems.</i>
TR 189	Nansel, Blane H.	<i>Letter Report of October 14, 2015 to Zachary Hergenrader regarding BRS-C078(191)--60-78, Cultural Resources Evaluation, Pottawattamie County Local Systems.</i>
TR 190	Kendall, Bryan S.	<i>Phase I Intensive Archaeological Investigation of the Proposed Wastewater Treatment Facility Upgrades Project, Grinnell, Section 19, T80N-R16W, Poweshiek County, Iowa</i>
TR 191	Hedden, John G.	<i>Phase I Archaeological Survey of Primary Roads Project IMN-035-4(158)87--0E-77, Polk County, Iowa</i>
TR 192	Hawkins, Alan J., and Richard J. Carlson	<i>Phase I Intensive Archaeological Investigation and Architectural Assessment of a Proposed Cell Tower Project (DESC Camp Dodge/Project #619852), Section 36, T80N-R25W, Polk County, Iowa</i>
TR 193	Hawkins, Alan J.	<i>Phase I Intensive Archaeological Investigation and Phase IA Historic Architectural Reconnaissance Survey of the Proposed NW Beaver Drive Trail Project, (STP-E-3827(617)--8V-77), Sections 25 and 36, T80N-R25W, Polk County, Iowa</i>
TR 194	Anderson, Mark L.	<i>Phase I Intensive Archaeological Investigation of the Proposed Chichaqua Bottoms Airport Wetland Project, Section 29, T81N-R22W, Polk County, Iowa</i>
TR 195	Hawkins, Alan J.	<i>Phase I Intensive Archaeological Investigation of the Proposed Fort Dodge B2 Backwash Lagoon Addition Project, Section 19, T89N-R28W, Webster County, Iowa</i>
TR 196	Ingalls, Marlin R.	<i>Phase I Architectural History Survey of IM-035-4(158)87-0E-77, I-35/80/235 Interchange Project, Polk County, Iowa</i>
TR 197	Kendall, Bryan S.	<i>Phase IA Archaeological Reconnaissance Investigation and Phase IA Historic Architectural Reconnaissance Survey of the Proposed Dam and Levee Removal Project, Monticello, Sections 15, 16 and 22, T86N-R03W, Jones County, Iowa</i>
TR 198	Nansel, Blane H.	<i>Letter Report of October 21, 2015 to Matthew Ferrier regarding STP-U-5970(616)--70-25, Cultural Resources Evaluation, City of Perry, Dallas County Local Systems.</i>

## Appendix F: Technical Reports, Fiscal Year 2016

<b>Number</b>	<b>Author</b>	<b>Title</b>
TR 199	Hawkins, Alan J.	<i>Phase I Intensive Archaeological Investigation of the Proposed Mahaffey Bridge Road Trail Extension Project, Sections 5 and 6, T80N-R6W, Johnson County, Iowa</i>
TR 200	Kendall, Bryan S.	<i>Phase I Intensive Archaeological Investigation of the Proposed Trail Project, Geode State Park, Sections 25 and 36, T70N-R5W, Henry County, Iowa</i>
TR 201	Kendall, Bryan S.	<i>Phase I Intensive Archaeological Investigation of the Proposed Lake Improvement Project, Pleasant Creek Lake State Recreation Area, Sections 5 and 6, T84N-R8W and Sections 35 and 36, T85N-R8W, Linn County and Section 1, T84N-R9W, Benton County, Iowa</i>
TR 202	Carlson, Richard J.	<i>Phase IA Historic Architectural Reconnaissance Survey of the Proposed Permeable Paver and Landscaping Project, Rand Park, Section 24, T65N-R05W, Lee County, Iowa</i>
TR 203	Kendall, Bryan S.	<i>Phase I Intensive Archaeological Investigation of the Proposed Permeable Paver and Landscaping Project, Rand Park, Section 24, T65N-R05W, Lee County, Iowa</i>
TR 204	Hawkins, Alan J.	<i>Primary Roads Project ENVR-(031)--90-00, Geophysical Survey of Archaeological Site 13HR180, Section 20, T79N-R41W, Harrison County, Iowa</i>
TR 205	Hawkins, Alan J.	<i>Phase I Intensive Archaeological Investigations of the Big Creek Lake Grade Stabilization Structure, Section 16, T81N-R25, Polk County, Iowa</i>
TR 206	Hawkins, Alan J.	<i>Phase I Intensive Archaeological Investigations of Brooklyn Wastewater Collections and Treatment Improvements (Contract Number 14ESDWQBPCALE-0006), Sections 23 and 24, T80N-R14W, Poweshiek County, Iowa</i>
TR 207	Perry, Michael J.	<i>A Phase I Archaeological Survey of Primary Roads Project BRF-65-7(35)--38-35, a.k.a. PIN14-35-065-010, Franklin County, Iowa</i>
TR 208	Noldner, Lara K., Glenn R. Storey, and William E. Whittaker	<i>Report of Ground Penetrating Radar Survey at Sandy Hook Cemetery (13WS599), Washington County, Iowa.</i>
TR 209	Hedden, John G.	<i>A Phase I Archaeological Survey of Primary Roads Parcel De-Acquisition Project U.S. 65, Parcel 102, Seq. 1 Jasper County, Iowa</i>
TR 210	Mack, Jennifer	<i>Archaeological Reconnaissance of the Proposed LaMotte Telephone Company Fiber Optic Project, Jackson and Dubuque County, Iowa</i>
TR 211	Nansel, Blane H.	<i>Letter Report of November 10, 2015 to James King regarding BRS-C073(129)--60-73, Cultural Resources Evaluation, Page County Local Systems.</i>
TR 212	Anderson, Mark L.	<i>A Phase I Archaeological Survey of Primary Roads Project NHSN-020-1(163)--2R-97 O'Brien County, Iowa</i>
TR 213	Ingalls, Marlin R.	<i>Phase I Intensive Archaeological Investigation of the Proposed Gray's Lake Landing Office Development Project, Des Moines, Polk County, Iowa</i>
TR 214	Nansel, Blane H.	<i>Letter Report of November 16, 2015 to Zachary Hergenrader regarding BROS-1642(664)--8J-78, Cultural Resources Evaluation, City of Council Bluffs, Pottawattamie County Local Systems.</i>
TR 215	Nansel, Blane H.	<i>Letter Report of November 19, 2015 to Tim Sheets regarding BROS-C091(100)--5F-91, Cultural Resources Evaluation, Warren County Local Systems.</i>
TR 216	Hawkins, Alan J.	<i>Phase I Archaeological Investigation and Phase IA Historic Architectural Review of a Proposed Cell Tower Project (DESC Summerset), Section 32, T77N-R23W, Warren County, Iowa</i>
TR 217	Hawkins, Alan J.	<i>Phase I Archaeological Investigation and Phase IA Historic Architectural Review of a Proposed Cell Tower Project (IA06 Fremont DT), Section 14, T74N-R14W, Mahaska County, Iowa</i>
TR 218	Hawkins, Alan J.	<i>Phase I Archaeological Investigation and Architectural Assessment of a Proposed Cell Tower Project (DESC Liberty), Section 19, T74N-R22W, Warren County, Iowa</i>
TR 219	Hawkins, Alan J.	<i>Phase I Archaeological Investigation and Architectural Assessment of a Proposed Cell Tower Project (IA11 Haverhill), Section 27, T83N-R18W, Marshall County, Iowa</i>
TR 220	Rogers, Leah D., and Joe Alan Artz	<i>Embarking for the Kingdom: Historical, Archeological, and Natural Resources Inventory of the Mormon Trails in Iowa.</i>
TR 221	Kendall, Bryan S.	<i>Phase I Intensive Archaeological Investigation of the Proposed Storm Water Tunnel and Retention Basins Project, Keokuk, Section 23 and 24, T65N-R5W, Lee County, Iowa</i>
TR 223	Nansel, Blane H.	<i>Letter Report of December 3, 2015 to Ben Loots regarding BROS-C046(61)--8J-46, Cultural Resources Evaluation, Humboldt County Local Systems.</i>
TR 224	Nansel, Blane H.	<i>Letter Report of December 10, 2015 to Jack Pope regarding STP-U-7860(601)--70-62, Cultural Resources Evaluation, City of University Park, Mahaska County Local Systems.</i>
TR 225	Carlson, Richard J.	<i>Phase IA Historic Architectural Reconnaissance Survey of the Proposed River Forest Road Reconstruction Project, City of Evansdale, Black Hawk County, Iowa</i>



## Appendix F: Technical Reports, Fiscal Year 2016

Number	Author	Title
TR 226	Hedden, John G.	<i>Phase I Intensive Archaeological Investigation of Site 13PK952, Des Moines Wastewater Reclamation Authority Eastside Interceptor Phase 27 Segment 6 Project, Jefferson Avenue Corridor, Des Moines, Iowa</i>
TR 227	Carlson, Richard J.	<i>Phase IA Historic Architectural Reconnaissance Survey of the Proposed Washington Street Reconstruction Project, City of Eldora, Hardin County, Iowa</i>
TR 228	Nansel, Blane H.	<i>Letter Report of December 14, 2015 to Ryan Schock regarding FHWA No. 135060, Cultural Resources Evaluation, Davis County Local Systems.</i>
TR 229	Nansel, Blane H.	<i>Letter Report of December 21, 2015 to Andrew McGuire regarding BROS-C054(104)--8J-54, Cultural Resources Evaluation, Keokuk County Local Systems.</i>
TR 230	Kendall, Bryan S.	<i>Phase I Intensive Archaeological Investigation of the Proposed Mine Reclamation Project, Sections 16 and 21, T75N-R18W, Marion County, Iowa</i>
TR 231	Kendall, Bryan S.	<i>Phase I Intensive Archaeological Investigation of the Proposed Floodplain Hydrology Enhancement Project, Sedan Bottoms Wildlife Management Area, Sections 23--26, T68N-R17W, Appanoose County, Iowa</i>
TR 232	Hawkins, Alan J.	<i>Phase I Intensive Archaeological Investigation of the Proposed Readlyn Wastewater Treatment Plant Improvements Project, Sections 11 and 14, T91N-R12W, Bremer County, Iowa</i>
TR 233	Kendall, Bryan S.	<i>Archaeological Investigation of the Proposed Wetland Reclamation Project, Section 19, T95N-R27W, Kossuth County, Iowa</i>
TR 234	Kendall, Bryan S.	<i>Archaeological Investigation of the Proposed Wetland Reclamation Project, Section 3, T95N-R27W, Kossuth County, Iowa</i>
TR 235	Nansel, Blane H.	<i>BROS-C024(113)--5F-24, Cultural Resources Evaluation, Crawford County, Local Systems</i>
TR 236	Nansel, Blane H.	<i>BROS-C024(114)--8J-24, Cultural Resources Evaluation, Crawford County, Local Systems</i>
TR 237	Nansel, Blane H.	<i>LFM(51)--7X-67, Cultural Resources Evaluation, Monona County, Local Systems</i>
TR 238	Nansel, Blane H.	<i>BROS-C090(80)--8J-90, Cultural Resources Evaluation, Wapello County, Local Systems</i>
TR 239	Carlson, Richard J.	[architectural forms only]
TR 240	Hawkins, Alan J., and Richard J. Carlson	<i>Phase II Archaeological Investigations of 13WB629, the Fort Dodge Clay Works, Webster County, Iowa</i>
TR 241	Nansel, Blane H.	<i>STP-U-4822(633)--70-17, Cultural Resources Evaluation, City of Mason City, Cerro Gordo County, Local Systems</i>
TR 242	Nansel, Blane H.	<i>Letter Report of January 4, 2016 to Paul Assman regarding BROS-C024(113)--5F-24, Cultural Resources Evaluation, Crawford County Local Systems.</i>
TR 243	Kendall, Bryan S.	<i>Phase I Intensive Archaeological Investigation of the Proposed Wastewater Plant Upgrade Project, Coralville, Section 6, T79N-R06W and Section 1, T79N-R07W, Johnson County, Iowa</i>
TR 244	Schroeder, Maria F.	<i>Phase I Archaeological Survey of the Northwood Wastewater Project, Sections 32--33, T100N-R20W, Worth County, Iowa</i>
TR 245	Hawkins, Alan J., and Richard J. Carlson	<i>Phase I Intensive Archaeological Investigation and Phase IA Historic Architectural Review of the 2015-TWC-0085 Homewood Cell Tower Project, Section 35, T84N-R24W, Story County, Iowa</i>
TR 246	Hawkins, Alan J., and Richard J. Carlson	<i>Phase I Intensive Archaeological Investigation and Phase IA Historic Architectural Review of the Proposed 2015-TWC-0113 Tower, Section 36, T69N-R10W, Van Buren County, Iowa</i>
TR 247	Carlson, Richard J.	<i>Phase IA Historic Architectural Review of the 2015-TWC-0114 Tower, Section 1, T69N-R11W, Leando, Van Buren County, Iowa</i>
TR 248	Hedden, John G.	<i>Phase I Intensive Archaeological Investigation of Primary Roads Project BRF-003-5(77)--38-12, a.k.a. PIN 14-12-003-010 and FHWA No. 16500, Butler County, Iowa</i>
TR 249	Nansel, Blane H.	<i>Letter Report of February 5, 2016 to Adam Shirley regarding TAP-R-C066(065)--8T-66, Cultural Resources Evaluation, Mitchell County Local Systems.</i>
TR 250	Hawkins, Alan J.	<i>Letter Report</i>
TR 252	Kendall, Bryan S., and William E. Whittaker	<i>Letter Report of February 1, 2016 to Scott Hillebo regarding archaeological evaluation, Big Creek Park tile repair, Section 23, T81N-R25W Polk County, Iowa.</i>
TR 253	Carlson, Richard J.	<i>Reconnaissance-Level Historic Architectural Survey of the Proposed Des Moines Lower Oak Park and Highland Park Sewer Separation Project, City of Des Moines, Polk County, Iowa</i>
TR 254	Nansel, Blane H.	<i>Letter Report of February 9, 2016 to Taylor Roll regarding BROS-C099(85)--8J-99, Cultural Resources Evaluation, Wright County Local Systems.</i>
TR 255	Nansel, Blane H.	<i>Letter Report of February 16, 2016 to Taylor Roll regarding BROS-C099(84)--55-99, Cultural Resources Evaluation, Wright County Local Systems.</i>

## Appendix F: Technical Reports, Fiscal Year 2016

Number	Author	Title
TR 256	Nansel, Blane H.	<i>Letter Report of February 22, 2016 to Taylor Roll regarding L-161230--73-99, Cultural Resources Evaluation, Wright County Local Systems.</i>
TR 257	Nansel, Blane H.	<i>Letter Report of February 23, 2016 to Trevor Wolf regarding BROS-C093(81)--5F-93, Cultural Resources Evaluation, Wayne County Local Systems.</i>
TR 258	Kendall, Bryan S., Richard J. Carlson, and William E. Whittaker	<i>Letter Report of February 4, 2016 to Candace Johnson regarding archaeological and architectural evaluation, Great Lakes Communications Monopole Tower, Spencer, Section 10, T96N-R37W Clay County, Iowa.</i>
TR 259	Carlson, Richard J.	<i>Intensive Level Historic Architectural Survey and Evaluation of the Fenton Water Tower and 601 Oak Street (Henry J. and Anna Newel House) in Fenton, Kossuth County, Iowa.</i>
TR 260	Hawkins, Alan J.	<i>Phase I Intensive Archaeological Investigation of the Proposed Paint Rock Parking Lot Project, Section 34, T97N-R03W, Allamakee County, Iowa</i>
TR 261	Hawkins, Alan J., and Richard J. Carlson	<i>Phase I Intensive Archaeological Investigation and Phase IA Historic Architectural Review of Tower Project 2016-TWC-0003, Section 31, T70N-R02W, Burlington, Des Moines County, Iowa.</i>
TR 262	Kendall, Bryan S.	<i>Letter Report of February 11, 2016 to Kevin DeGoey regarding archaeological evaluation, fuel pump replacement, Grinnell, Section 21, T80N-R16W, Poweshiek County, Iowa.</i>
TR 263	Nansel, Blane H.	<i>Letter Report of February 29, 2016 to Angie Gersten regarding BROS-C082(57)--8J-82, Cultural Resources Evaluation Scott County Local Systems.</i>
TR 264	Nansel, Blane H.	<i>Letter Report of March 7, 2016 to Scott Shippers regarding BROS-C062(91)--8J-62, Cultural Resources Evaluation, Mahaska County Local Systems.</i>
TR 265	Kendall, Bryan S., and Richard J. Carlson	<i>Phase I Intensive Archaeological Investigation and Phase IA Historic Architectural Review of a Proposed Cellular Tower Project, Dickens, Section 18, T96N-R35W, Clay County, Iowa</i>
TR 266	Carlson, Richard J., and William E. Whittaker	<i>Letter Report of February 18, 2016 to Candace Johnson regarding historic architectural review, U.S. Cellular Monopole Tower (USC 392350), Agency, Wapello County, Iowa.</i>
TR 269	Kendall, Bryan S.	<i>Phase I Intensive Archaeological Investigation of the Proposed Waterline Project, Lake Seguma Wildlife Management Area, Section 1, T68N-R11W, Van Buren County, Iowa</i>
TR 270	Hawkins, Alan J.	<i>Phase I Intensive Archaeological Investigation of the Proposed Seven Hills Road Project, Section 19, T86N-R06W, Linn County, Iowa</i>
TR 271	Hawkins, Alan J., and Richard J. Carlson	<i>Phase I Intensive Archaeological Investigation and Phase IA Architectural Review of the Proposed Keosauqua DT - 392354 Cell Tower Project, Section 36, T69N-R10W,</i>
TR 272	Schroeder, Maria F.	<i>Phase I Intensive Archaeological Investigation of the Proposed CeMar Lindale Connector Trail Project, Sections 2 and 11, T83N-R7W Linn County, Iowa.</i>
TR 273	Kendall, Bryan S.	<i>Phase I Intensive Archaeological Investigation of the Proposed Drinking Water Well Project, Alta, Sections 23 and 26, T91N-R38W, Buena Vista County, Iowa</i>
TR 274	Schroeder, Maria F., and Richard J. Carlson	<i>Archaeological Phase I Intensive Survey and Architectural Evaluation of Proposed 168th Avenue Leland Bridge Replacement Project, (BROS-C095(67)--5F-95), Section 2, T98N-R24W, Winnebago County, Iowa</i>
TR 275	Kendall, Bryan S., and William E. Whittaker	<i>Letter Report of February 26, 2016 to Jessica Manken regarding archaeological evaluation, Nicholson-Ford Park expansion and fence line project, Marshalltown, Section 19, T84N-R17W and Section 26 T84N-R18W, Marshall County, Iowa.</i>
TR 276	Nansel, Blane H.	<i>Letter Report of March 14, 2016 to Jonathan Peterson regarding BROS-C067(77)--8J-67, Cultural Resources Evaluation, Monona County Local Systems.</i>
TR 277	Nansel, Blane H.	<i>Letter Report of March 21, 2016 to Jonathan Peterson regarding BROS-C067(78)--60-67, Cultural Resources Evaluation, Monona County Local Systems.</i>
TR 278	Kendall, Bryan S.	<i>Phase I Intensive Archaeological Investigation of the Proposed Watershed Improvement Project, F. W. Kent Park, Sections 13, 14, 23, and 24, T80N-R08W, Johnson County, Iowa</i>
TR 279	Kendall, Bryan S.	<i>Phase I Intensive Archaeological Investigation of the Proposed Dane Road Development Project, Section 28, T79N-R06W, Johnson County, Iowa</i>
TR 280	Kendall, Bryan S.	<i>Phase I Intensive Archaeological Investigation of the Proposed Crawford County Firefighters Association Tower Project, Section 31, T84N-R38W, Crawford County, Iowa</i>
TR 281	Kendall, Bryan S.	<i>Phase I Intensive Archaeological Investigation of the Proposed Humboldt Dam Removal Project, Section 19, T91N-R28W, Humboldt County, Iowa</i>
TR 283	Anderson, Mark L.	<i>A Phase I Archaeological Survey of Primary Roads Project NHSN-003-3(55)--2R-46, a.k.a. PIN 16-46-033-010, Humboldt County, Iowa.</i>
TR 284	Schroeder, Maria F., and Richard J. Carlson	<i>Phase I Intensive Archaeological Investigation and Phase IA Historic Architectural Review of the Proposed State of Iowa P25 Trunked Radio/Microwave System Project Ft. Dodge #35 Tower, Section 31, T89N-R28W, Webster County, Iowa</i>

## Appendix F: Technical Reports, Fiscal Year 2016

<b>Number</b>	<b>Author</b>	<b>Title</b>
TR 285	Whittaker, William E.	<i>Phase IA Archaeological Reconnaissance Investigation of the Proposed Fort Madison Sanitary Sewer Project, Fort Madison, Lee County, Iowa</i>
TR 286	Kendall, Bryan S., and William E. Whittaker	<i>Letter Report of March 30, 2016 to Kevin DeGoey regarding archaeological evaluation, fuel pump and storage tank installation, Melbourne, Section 6, T82N-R19W Marshall County, Iowa.</i>
TR 287	Nansel, Blane H.	<i>Letter Report of April 13, 2016 to Paul Assman regarding BROS-C024(116)--5F-24, Cultural Resources Evaluation Crawford County Local Systems.</i>
TR 288	Nansel, Blane H.	<i>Letter Report of April 11, 2016 to Ryan Schock regarding BROS-C026(88)--8J-26, Cultural Resources Evaluation, Davis County Local Systems.</i>
TR 289	Nansel, Blane H.	<i>Letter Report of April 18, 2016 to Ryan Schock regarding BROS-C026(90)--5F-26, Cultural Resources Evaluation, Davis County Local Systems.</i>
TR 290	Hawkins, Alan J., and Richard J. Carlson	<i>Phase I Intensive Archaeological Investigation and Phase IA Architectural Review of the Proposed Osage 2 - 434388 Cell Tower Project, Section 25, T98N-R17W, Mitchell County, Iowa</i>
TR 291	Hawkins, Alan J., and Richard J. Carlson	<i>Phase I Intensive Archaeological Investigation and Phase IA Architectural Review of the Proposed Rockford 2 - 434389 Cell Tower Project, Section 14, T95N-R18W, Floyd County, Iowa</i>
TR 292	Hawkins, Alan J., and Richard J. Carlson	<i>Phase I Intensive Archaeological Investigation and Phase IA Architectural Review of the Proposed Allerton 2 - 438361 Cell Tower Project, Section 11, T69N-R22W, Wayne County, Iowa</i>
TR 293	Hawkins, Alan J., and Richard J. Carlson	<i>Phase I Intensive Archaeological Investigation and Phase IA Architectural Review of the Proposed Hartley 2 - 763341 Cell Tower Project, Section 7, T97N-R39W, O'Brien County, Iowa</i>
TR 294	Hawkins, Alan J., and Richard J. Carlson	<i>Phase I Intensive Archaeological Investigation and Phase IA Architectural Review of the Proposed Wyoming 2 - 767378 Cell Tower Project, Section 30, T84N-R1W, Jones County, Iowa</i>
TR 295	Hawkins, Alan J., and Richard J. Carlson	<i>Phase I Intensive Archaeological Investigation and Phase IA Architectural Review of the Proposed Oxford Junction 2 - 767379 Cell Tower Project, Section 15, T83N-R1W, Jones County, Iowa</i>
TR 296	Hawkins, Alan J., and Richard J. Carlson	<i>Phase I Intensive Archaeological Investigation and Phase IA Architectural Review of the Proposed Morning Sun 2 - 760930 Cell Tower Project, Section 25, T73N-R04W, Louisa County, Iowa</i>
TR 298	Hawkins, Alan J., and Richard J. Carlson	<i>Phase I Intensive Archaeological Investigation and Phase IA Historic Architectural Review of the Proposed W16623 Cedar Rapids #21 Tower Project, Section 26, T83N-R08W, Linn County, Iowa</i>
TR 299	Hawkins, Alan J., and Richard J. Carlson	<i>Phase I Intensive Archaeological Investigation and Phase IA Historic Architectural Review of the Proposed W16624 Story #85 Tower Project, Section 8, T83N-R23W, Story County, Iowa</i>
TR 300	Hawkins, Alan J., and Richard J. Carlson	<i>Phase IA Archaeological Reconnaissance and Phase IA Historic Review of the Proposed W16625 Keokuk #52 Tower Project, Section 11, T75N-R12W, Keokuk County, Iowa</i>
TR 301	Hawkins, Alan J., and Richard J. Carlson	<i>Phase I Intensive Archaeological Investigation and Phase IA Historic Architectural Review of the Proposed Sibley DT - 763340 Cell Tower Project, Section 13, T99N-R42W, Osceola County, Iowa</i>
TR 302	Hawkins, Alan J.	<i>Phase I Intensive Archaeological Investigation of the Proposed Springbrook P25 Trunked Radio/Microwave System Project, Section 33, T81N-R31W, Guthrie County, Iowa</i>
TR 303	Ingalls, Marlin R.	<i>An Intensive Historic Architectural Survey of Primary Roads Project STPN-016-4(27)--2J-56, a.k.a. PIN 16-56-016-010, The Coleman Road, Lee County, Iowa</i>
TR 304	Kendall, Bryan S.	<i>Phase I Intensive Archaeological Investigation of a Proposed Agricultural Development Project, Lime Creek Township, Section 30, T77N-R9W, Washington County, Iowa.</i>
TR 305	Kendall, Bryan S.	<i>Letter Report of April 4, 2016 to Ed Slattery regarding Archaeological Evaluation, Erosion Control Project, F. W. Kent Park, Section 24, T80N-R08W Johnson County, Iowa.</i>
TR 306	Hawkins, Alan J.	<i>Phase I Intensive Archaeological Investigation of the Proposed CREP Wetland Gru871810B Project, Section 10, T87N-R18W, Grundy County, Iowa.</i>
TR 307	Hawkins, Alan J.	<i>Phase I Intensive Archaeological Investigation of Proposed Tiffin Wastewater Treatment Upgrades, Section 28, T80N-R07W, Johnson County, Iowa</i>
TR 308	Hawkins, Alan J.	<i>Phase I Intensive Archaeological Investigation of the Proposed CREP Wetland Gre842916D Project, Section 16, T84N-R29W, Greene County, Iowa</i>
TR 309	Ingalls, Marlin R.	<i>Archaeological Investigation of the 5th and 6th Avenue SE Sanitary Sewer Replacement Project, Section 22, T83N-R7W, City of Cedar Rapids, Linn County, Iowa</i>
TR 310	Hedden, John G.	<i>A Supplemental Phase II/Data Recovery Plan for 13ST323, The Danish Brotherhood Hall Site, 609 West 4th Street, Davenport, Scott County, Iowa</i>



## Appendix F: Technical Reports, Fiscal Year 2016

Number	Author	Title
TR 311	Anderson, Mark L.	<i>Phase I Intensive Archaeological Investigation of the Proposed 2380 Sugar Bottom Road NE Project, Solon, Section 3, T80N-R06W, Johnson County, Iowa</i>
TR 312	Nansel, Blane H.	<i>BROS-1415(628)--8J-23, Cultural Resources Evaluation, City of Clinton, Clinton County, Local Systems</i>
TR 313	Hawkins, Alan J.	<i>Phase I Intensive Archaeological Investigation of the Proposed Matsell Bridge Natural Area River Oxbow Project, Section 22, T85N-R05W, Linn County, Iowa</i>
TR 314	Kendall, Bryan S.	<i>Phase I Intensive Archaeological Investigation of a Proposed Wastewater Upgrade Project, Belle Plaine, Section 29, T82N-R12W, Benton County, Iowa</i>
TR 315	Carlson, Richard J., and Alan J. Hawkins	<i>Phase I Historic Architectural Evaluation of a Proposed Distributed Antenna System at the Iowa State Fairgrounds, Section 6, T78N-R23W, Des Moines, Polk County, Iowa</i>
TR 316	Kendall, Bryan S.	<i>Phase I Intensive Archaeological Investigation of the Proposed Runway Expansion Project, Algona Municipal Airport, Sections 3 and 4, T95N-R29W, Kossuth County, Iowa</i>
TR 317	Schroeder, Maria F., and Richard J. Carlson	<i>Phase I Intensive Archaeological Investigation and Phase IA Historic Architectural Review of the Proposed State of Iowa P25 Trunked Radio/Microwave System Project Woodward #95 Tower, Section 30, T82N-R26W, Boone County, Iowa</i>
TR 318	Schroeder, Maria F., and Richard J. Carlson	<i>Phase I Intensive Archaeological Investigation and Phase IA Historic Architectural Review of the Proposed State of Iowa P25 Trunked Radio/Microwave System Project Albia #4 Tower, Section 28, T72N-R17W, Monroe County, Iowa</i>
TR 319	Schroeder, Maria F., and Richard J. Carlson	<i>Phase I Intensive Archaeological Investigation and Phase IA Historic Architectural Review of the Proposed State of Iowa P25 Trunked Radio/Microwave System Project Lucas #60 Tower, Section 5, T71N-R21W, Lucas County, Iowa</i>
TR 320	Whittaker, William E.	<i>Letter Report of June 6, 2016 to Katie Becker and Mike Brennan regarding archaeological monitoring, site 13AM171, Community Development Block Grant (CDBG) lift pump, Lansing, Allamakee County.</i>
TR 321	Nansel, Blane H.	<i>Letter Report of May 2, 2016 to Tim Sheets regarding BROS-C091(109)--5F-91, Cultural Resources Evaluation, Warren County Local Systems.</i>
TR 323	Hawkins, Alan J., and Lara K. Noldner	<i>Phase I Intensive Archaeological Investigation of Proposed Wahpeton Water Storage Tower and Water Treatment Facility Upgrade Projects, Sections 13 and 23, T99N-R37W, Dickinson County, Iowa</i>
TR 324	Nansel, Blane H.	<i>Letter Report of May 9, 2016 to Ryan Brennan regarding Cedar Wapsi Road (C57) Bridge, Cultural Resources Evaluation, Black Hawk County Local Systems.</i>
TR 326	Carlson, Richard J., and Alan J. Hawkins	<i>Archaeological Investigation and Phase IA Architectural Review of the Proposed Jewell 2-760924 Tower Project, Section 33, T87N-R24W, Hamilton County, Iowa.</i>
TR 327	Hawkins, Alan J.	<i>Phase I Intensive Archaeological Investigation of the Proposed Shelter Removal and Composting Toilet Project, Sections 23 and 24, T78N-R23W, Polk County, Iowa</i>
TR 328	Nansel, Blane H.	<i>Letter Report of May 23, 2016 to Cody Forch regarding BRS-C091(101)--60-91, Cultural Resources Evaluation, Warren County Local Systems.</i>
TR 329	Hawkins, Alan J.	<i>Phase I Intensive Archaeological Investigation of a Proposed Agricultural Building Project Near Moscow, Section 28, T78N-R02W, Muscatine County, Iowa</i>
TR 330	Nansel, Blane H.	<i>Letter Report of May 27, 2016 to Brian Carter regarding BROS-C029(82)--8J-29, Cultural Resources Evaluation, Des Moines County Local Systems.</i>
TR 331	Carlson, Richard J.	<i>Phase I Intensive Historic Architectural Survey and Evaluation of the John C. and Minnie Rohlwing Farm for the Proposed Rockford 2 - 434389 Cell Tower Project, Section 14, T95N-R18W, Floyd County, Iowa</i>
TR 336	Nansel, Blane H.	<i>Letter Report of June 3, 2016 to Thomas Rohe regarding BROS-C075(146)--8J-75, Cultural Resources Evaluation, Plymouth County Local Systems.</i>
TR 337	Nansel, Blane H.	<i>BROS-C075(147)--8J-75, Cultural Resources Evaluation, Plymouth County, Local Systems</i>
TR 338	Whittaker, William E.	<i>Letter Report of May 20, 2016 to Scott Ritter regarding archaeological evaluation, 2575 Highway 1 SW, Wethy subdivision, Johnson County.</i>
TR 339	Whittaker, William E.	<i>Letter Report of May 20, 2016 to Steve Boote regarding archaeological evaluation, Tallgrass Apartments driveway access project, Dickinson County.</i>
TR 340	Schroeder, Maria F., and Richard J. Carlson	<i>Phase I Historic Architectural Evaluation of a Proposed Springbrook P25 Trunked Radio/Microwave System Tower Project Section 33, T81N-R31W, Guthrie County, Iowa</i>
TR 342	Nansel, Blane H.	<i>Letter Report of June 13, 2016 to Amy Quartell regarding STP-U-8177(619)--70-25, Cultural Resources Evaluation, City of Waukee, Dallas County Local Systems.</i>
TR 343	Nansel, Blane H.	<i>Letter Report of June 16, 2016 regarding BRFN-092-3(36)--39-01, Cultural Resources Evaluation, Adair County, Primary Roads</i>

## Appendix F: Technical Reports, Fiscal Year 2016

<b>Number</b>	<b>Author</b>	<b>Title</b>
TR 345	Hawkins, Alan J., and Richard J. Carlson	<i>Phase I Intensive Archaeological Investigation and Phase IA Architectural Review of the Proposed New Hampton Tower Project, Section 25, T95N-R13W, Chickasaw County, Iowa</i>
TR 346	Hawkins, Alan J., and Richard J. Carlson	<i>Phase I Intensive Archaeological Investigation and Phase IA Architectural Review of the Proposed USC Breda 393348 (W16696) Tower Project, Section 13, T85N-R36W, Carroll County, Iowa</i>
TR 353	Hawkins, Alan J.	<i>Phase I Intensive Archaeological Investigation of the Proposed Keota Agricultural Building Project, Section 9, T76N-R09W, Washington County, Iowa</i>
TR 356	Schroeder, Maria F., and Richard J. Carlson	<i>Archaeological Phase I Intensive Survey and Phase IA Historic Architectural Review of DESMIAU2719 Lockridge AT&amp;T UMTS Guyed Tower, Section 33, T72N-R08W, Jefferson County, Iowa</i>

## Students and Volunteers, Fiscal Year 2016

### Work-Study Students

Name	Affiliation	Major	Year	Activity	Hours
Rebekah Gansemer	University of Iowa	Anthropology	Sophomore	collections	300
Robert Lepcin	University of Iowa	Anthropology	Junior	collections	300
Maureen Lonergan	University of Iowa	Anthropology	Senior	collections	300
Maria Lopez	University of Iowa	Chemistry	Senior	collections	84
Joshua Malik	University of Iowa	Business	Freshman	collections	118
Krishna Yaramati	University of Iowa	Finance	Senior	collections	43

### Student Volunteers/Interns

Name	Affiliation	Major	Year	Activity	Hours
Amanda Adams	University of Iowa	Earth and Environmental Sciences	Graduate	collections, museum studies	200
William Alexander	Cornell College	Archaeology	Senior	research	135
Sara Anderson	University of Iowa	Anthropology	Post-undergraduate	research	40
Emma Baxter	Oberlin College	Anthropology	Junior	collections	80
Ashlynn Brown	University of Iowa	Anthropology	Junior	collections, museum studies intern	135
Seraphina Carey	University of Iowa	Anthropology	Senior	collections, education	100
Warren Davis	St. Cloud State University	Cultural Resource Management	Graduate	research	120
Lily Doershuk	Pennsylvania State University	Anthropology	Graduate	bioarchaeology	5
Rebekah Gansemer	University of Iowa	Anthropology	Sophomore	research	200
Muriel Grubb	Cornell College	Archaeology	Senior	research	300
Burl Henry	University of Iowa	Anthropology	Senior	collections	144
Madeleine Hoofnagle	University of Iowa	Anthropology	Junior	research	200
Anais (Annie) Levin	Grinnell College	Anthropology	Sophomore	research, education	240
Maureen Lonergan	University of Iowa	Anthropology	Senior	research	150
Abigail Morrow	University of Iowa	History	Junior	collections, education	20
Chris Rainwater	New York University	Anthropology	Graduate	bioarchaeology	40
Eliza Ross	University of Northern Iowa	Anthropology	Junior	research	80
Amanda Schneider	Cornell College	Archaeology	Senior	research	135
David Tarailo	University of Iowa	Earth and Environmental Sciences	Graduate	collections, museum studies	135

### Public Volunteers

Name	Affiliation	Major	Year	Activity	Hours
Dustin Clarke	Iowa City			bioarchaeology	57
Krissy Dallmann	Iowa City			archives, collections	56
Bill Moore	Quad Cities IAS			research	10
Gustav Thunhorst	Iowa City			research	40

### Total Hours

**3,767**